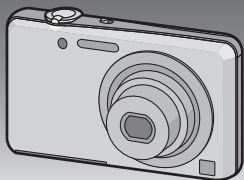


Panasonic®

Basic Owner's Manual Digital Camera

Model No. **DMC-FH7**

LUMIX



Before connecting, operating or adjusting this product,
please read the instructions completely.



More detailed instructions on the operation of this camera are contained in "Owner's Manual for advanced features (PDF format)" in the supplied CD-ROM. Install it on your PC to read it.



For USA and Puerto Rico assistance, please call: 1-800-211-PANA(7262) or,
contact us via the web at: <http://www.panasonic.com/contactinfo>



VQT3P77

**Dear Customer,
Thank you for choosing Panasonic!**

You have purchased one of the most sophisticated and reliable products on the market today. Used properly, we're sure it will bring you and your family years of enjoyment. Please take time to fill in the information on the below. The serial number is on the tag located on the underside of your camera. Be sure to **retain this manual** as your convenient camera information source.

Date of Purchase	Dealer Phone No.
Dealer Purchased From	Model No.
Dealer Address	Serial No.

Please note that the actual controls and components, menu items, etc. of your Digital Camera may look somewhat different from those shown in the illustrations in this Owner's Manual.

Carefully observe copyright laws.

- Recording of pre-recorded tapes or discs or other published or broadcast material for purposes other than your own private use may infringe copyright laws. Even for the purpose of private use, recording of certain material may be restricted.



A lithium ion battery that is recyclable powers the product you have purchased. Please call 1-800-8-BATTERY for information on how to recycle this battery.

Information for Your Safety

WARNING:

TO REDUCE THE RISK OF FIRE, ELECTRIC SHOCK OR PRODUCT DAMAGE,

- **DO NOT EXPOSE THIS APPARATUS TO RAIN, MOISTURE, DRIPPING OR SPLASHING AND THAT NO OBJECTS FILLED WITH LIQUIDS, SUCH AS VASES, SHALL BE PLACED ON THE APPARATUS.**
- **USE ONLY THE RECOMMENDED ACCESSORIES.**
- **DO NOT REMOVE THE COVER (OR BACK); THERE ARE NO USER SERVICEABLE PARTS INSIDE. REFER SERVICING TO QUALIFIED SERVICE PERSONNEL.**

THE SOCKET OUTLET SHALL BE INSTALLED NEAR THE EQUIPMENT AND SHALL BE EASILY ACCESSIBLE.

■ Product identification marking

Product	Location
Digital Camera	Bottom
Battery charger	Bottom

FCC Note:

This equipment has been tested and found to comply with the limits for a Class B digital device, pursuant to Part 15 of the FCC Rules. These limits are designed to provide reasonable protection against harmful interference in a residential installation. This equipment generates, uses, and can radiate radio frequency energy and, if not installed and used in accordance with the instructions, may cause harmful interference to radio communications. However, there is no guarantee that interference will not occur in a particular installation. If this equipment does cause harmful interference to radio or television reception, which can be determined by turning the equipment off and on, the user is encouraged to try to correct the interference by one or more of the following measures:

- Reorient or relocate the receiving antenna.
- Increase the separation between the equipment and receiver.
- Connect the equipment into an outlet on a circuit different from that to which the receiver is connected.
- Consult the dealer or an experienced radio/TV technician for help.

FCC Caution: To assure continued compliance, follow the attached installation instructions and use only shielded interface cables with ferrite core when connecting to computer or peripheral devices.

Any changes or modifications not expressly approved by the party responsible for compliance could void the user's authority to operate this equipment.

Declaration of Conformity

Trade Name: Panasonic

Model No.: DMC-FH7

Responsible party: Panasonic Corporation of North America
One Panasonic Way, Secaucus, NJ 07094

Support Contact: Panasonic Consumer Electronics Company
1-800-211-PANA (7262)

This device complies with Part 15 of the FCC Rules. Operation is subject to the following two conditions: (1) This device may not cause harmful interference, and (2) this device must accept any interference received, including interference that may cause undesired operation.

■ About the battery pack

CAUTION

Battery pack (Lithium ion battery pack)

- Use the specified unit to recharge the battery pack.
- Do not use the battery pack with equipment other than the specified unit.
- Do not get dirt, sand, liquids, or other foreign matter on the terminals.
- Do not touch the plug terminals (+ and -) with metal objects.
- Do not disassemble, remodel, heat or throw into fire.

If any electrolyte should come into contact with your hands or clothes, wash it off thoroughly with water.

If any electrolyte should come into contact with your eyes, never rub the eyes. Rinse eyes thoroughly with water, and then consult a doctor.

CAUTION

Danger of explosion if battery is incorrectly replaced. Replace only with the same or equivalent type recommended by the manufacturer. Dispose of used batteries according to the manufacturer's instructions.

- Do not heat or expose to flame.
- Do not leave the battery(ies) in an automobile exposed to direct sunlight for a long period of time with doors and windows closed.

Warning

Risk of fire, explosion and burns. Do not disassemble, heat above 60 °C (140 °F) or incinerate.

■ About the battery charger

CAUTION!

DO NOT INSTALL OR PLACE THIS UNIT IN A BOOKCASE, BUILT-IN CABINET OR IN ANOTHER CONFINED SPACE. ENSURE THE UNIT IS WELL VENTILATED. TO PREVENT RISK OF ELECTRIC SHOCK OR FIRE HAZARD DUE TO OVERHEATING, ENSURE THAT CURTAINS AND ANY OTHER MATERIALS DO NOT OBSTRUCT THE VENTILATION VENTS.

Battery charger

This battery charger operates on AC between 110 V and 240 V.

But

- In the U.S.A. and Canada, the battery charger must be connected to a 120 V AC power supply only.
- When connecting to an AC supply outside of the U.S.A. or Canada, use a plug adaptor to suit the AC outlet configuration.

■ Cautions for Use

- Do not use any other AV cables except the supplied one.
- Do not use any other USB connection cables except the supplied one.

Keep this unit as far away as possible from electromagnetic equipment (such as microwave ovens, TVs, video games etc.).

- If you use this unit on top of or near a TV, the pictures and/or sound on this unit may be disrupted by electromagnetic wave radiation.
- Do not use this unit near cell phones because doing so may result in noise adversely affecting the pictures and/or sound.
- Recorded data may be damaged, or pictures may be distorted, by strong magnetic fields created by speakers or large motors.
- Electromagnetic wave radiation generated by microprocessors may adversely affect this unit, disturbing the pictures and/or sound.
- If this unit is adversely affected by electromagnetic equipment and stops functioning properly, turn this unit off and remove the battery or disconnect AC adaptor (DMW-AC5PP; optional). Then reinsert the battery or reconnect AC adaptor and turn this unit on.

Do not use this unit near radio transmitters or high-voltage lines.

- If you record near radio transmitters or high-voltage lines, the recorded pictures and/or sound may be adversely affected.

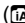
-If you see this symbol-

Information on Disposal in other Countries outside the European Union

This symbol is only valid in the European Union.
If you wish to discard this product, please contact your local authorities or dealer and ask for the correct method of disposal.



Contents

Information for Your Safety	3
Standard Accessories	9
Names of the Components	10
How to Use the Touch Panel	12
Charging the Battery	14
• Charging	14
• Approximate operating time and number of recordable pictures	15
About the Built-in Memory/the Card	16
Inserting and Removing the Card (optional)/the Battery	17
Setting Date/Time (Clock Set).....	18
• Changing the Clock Setting	18
Selecting the [Rec] Mode	19
Taking pictures using the Automatic Function	
( : Intelligent Auto Mode)	20
• Scene Detection.....	21
Motion Picture Mode	22
Playing Back Pictures ([Normal Play])	23
Deleting Pictures	23
Setting the Menu	24
Reading the Owner's Manual (PDF format)	25
Specifications	27
Digital Camera Accessory System.....	30
Digital Camera Accessory Order Form	31
Limited Warranty (ONLY FOR U.S.A. AND PUERTO RICO)	32

Standard Accessories

Check that all the accessories are supplied before using the camera.
Product numbers correct as of May 2011. These may be subject to change.

- 1 Battery Pack*
(Indicated as **battery pack** or **battery** in the text)
Charge the battery before use.
- 2 Battery Charger
(Indicated as **battery charger** or **charger** in the text)
- 3 USB Connection Cable
- 4 AV Cable
- 5 CD-ROM
 - Software:
Use it to install the software to your PC.
 - Owner's Manual
- 6 Hand Strap
- 7 Stylus Pen

* When purchasing a spare battery, please purchase an optional battery (DMW-BCK7PP).

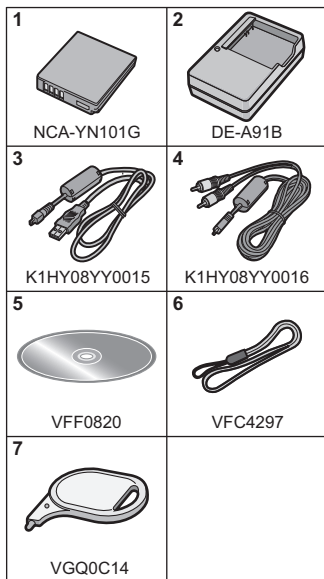
• SD Memory Card, SDHC Memory Card and SDXC Memory Card are indicated as **card** in the text.

• **The card is optional.**

You can record or play back pictures on the built-in memory when you are not using a card.

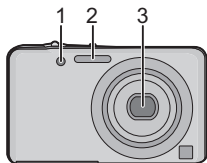
• For information about optional accessories, refer to the "Digital Camera Accessory System".

• If any accessories are lost, customers should contact Panasonic's parts department at 1 800 833-9626 for further information about obtaining replacement parts.

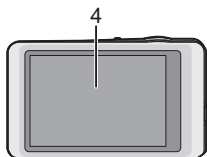


Names of the Components

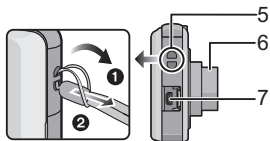
- 1 Self-timer indicator
AF Assist Lamp
- 2 Flash
- 3 Lens



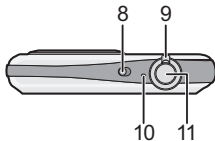
- 4 Touch panel/LCD monitor



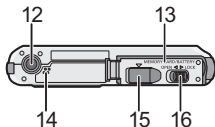
- 5 Strap eyelet
 - Be sure to attach the strap when using the camera to ensure that you will not drop it.
- 6 Lens barrel
- 7 [AV OUT/DIGITAL] socket



-
- 8 Camera ON/OFF switch
 - 9 Zoom lever
 - 10 Microphone
 - 11 Shutter button





-
- 12 Tripod receptacle
 - 13 Card/Battery door
 - 14 Speaker
 - Do not cover the speaker with your fingers.



- 15 DC coupler cover
 - When using an AC adaptor, ensure that the Panasonic DC coupler (DMW-DCC10; optional) and AC adaptor (DMW-AC5PP; optional) are used.
 - Always use a genuine Panasonic AC adaptor (DMW-AC5PP; optional).
 - It is recommended to use a fully charged battery or AC adaptor (DMW-AC5PP; optional) and DC coupler (DMW-DCC10; optional) when recording motion pictures.
 - If while recording motion pictures using the AC adaptor and the power supply is cut off due to a power outage or if the AC adaptor is disconnected etc., the motion picture being recorded will not be recorded.
 - 16 Release lever
-

How to Use the Touch Panel

This touch panel is a type that detects pressure.

Touch the screen To touch and release the touch panel.	Drag A movement without releasing the touch panel.
 <p>Use this to perform tasks such as selecting icons or images displayed on the touch panel.</p> <ul style="list-style-type: none">• It may not operate properly when multiple icons are touched simultaneously, so try to touch the center of the icon.	 <p>This is used when performing tasks such as moving to the next image by dragging horizontally, or changing the range of the displayed image. This can also be used to perform tasks such as switching the screen by operating the slide bar.</p>

Note

- If you use a commercially available liquid crystal protection sheet, please follow the instructions that accompany the sheet. (Some liquid crystal protection sheets may impair visibility or operability.)
- Apply a little extra pressure when touching if you have a commercially available protection sheet affixed or if you feel it is not responding well.
- Touch panel will not operate properly when the hand holding this unit is pressing on the touch panel.
- Do not press using anything with a sharp tip or anything hard, except for the supplied stylus pen.
- Do not operate with your fingernails.
- Do not scratch or press the LCD monitor too hard.
- Wipe the LCD monitor with dry soft cloth when it gets dirty with finger prints and others.



■ About the Stylus pen

It is easier to use the stylus pen (supplied) for detailed operation or if it is hard to operate with your fingers.

- Do not place it where small children can reach.
- Do not place the stylus pen on the LCD monitor when storing. LCD monitor may break when the stylus pen is pressed strongly against the LCD monitor.



Charging the Battery

■ About batteries that you can use with this unit

Supplied battery or dedicated optional batteries (DMW-BCK7PP) can be used with this unit.

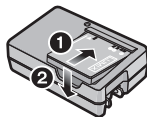
It has been found that counterfeit battery packs which look very similar to the genuine product are made available to purchase in some markets. Some of these battery packs are not adequately protected with internal protection to meet the requirements of appropriate safety standards. There is a possibility that these battery packs may lead to fire or explosion. Please be advised that we are not liable for any accident or failure occurring as a result of use of a counterfeit battery pack. To ensure that safe products are used we would recommend that a genuine Panasonic battery pack is used.

- Use the dedicated charger and battery.

Charging

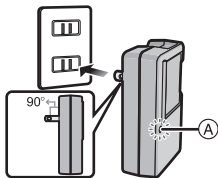
- The battery is not charged when the camera is shipped. Charge the battery before use.
- Charge the battery with the charger indoors.

- 1 Attach the battery paying attention to the direction of the battery.**



- 2 Connect the charger to the electrical outlet.**

- The [CHARGE] indicator (A) lights up and charging begins.



■ About the [CHARGE] indicator

The [CHARGE] indicator turns on:

The [CHARGE] indicator is turned on during charging.

The [CHARGE] indicator turns off:

The [CHARGE] indicator will turn off once the charging has completed without any problem. (Disconnect the charger from the electrical socket and detach the battery after charging is completed.)

• When the [CHARGE] indicator flashes

- The battery temperature is too high or too low. It is recommended to charge the battery again in an ambient temperature of between 10 °C to 30 °C (50 °F to 86 °F).
- The terminals of the charger or the battery are dirty. In this case, wipe them with a dry cloth.

■ Charging time

	Supplied battery	Optional battery
Charging time	Approx. 115 min	Approx. 120 min

Approximate operating time and number of recordable pictures

	Supplied battery	Optional battery
Capacity of the battery	660 mAh	680 mAh
Number of recordable pictures	Approx. 240 pictures	Approx. 245 pictures
Recording time	Approx. 120 min	Approx. 122 min

Recording conditions by CIPA standard

- CIPA is an abbreviation of [Camera & Imaging Products Association].
- Normal Picture Mode
- Temperature: 23 °C (73.4 °F)/Humidity: 50%RH when LCD monitor is on.
- Using a Panasonic SD Memory Card (32 MB).
- Starting recording 30 seconds after the camera is turned on. (When the Optical Image Stabilizer Function is set to [ON].)
- **Recording once every 30 seconds** with full flash every second recording.
- Rotating the zoom lever from Tele to Wide or vice versa in every recording.
- Turning the camera off every 10 recordings and leaving it until the temperature of the battery decreases.

	Supplied battery	Optional battery
Playback time	Approx. 200 min	Approx. 205 min

About the Built-in Memory/the Card

Built-in Memory

- **Memory size: Approx. 84 MB**
- The access time for the built-in memory may be longer than the access time for a card.

Card

The following cards which conform to the SD video standard can be used with this unit.

(These cards are indicated as **card** in the text.)

	Remarks
SD Memory Card (8 MB to 2 GB)	<ul style="list-style-type: none">• Use a card with SD Speed Class* with “Class 6” or higher when recording motion pictures.• SDHC Memory Card can be used with SDHC Memory Card or SDXC Memory Card compatible equipment.• SDXC Memory Card can only be used with SDXC Memory Card compatible equipment.• Check that the PC and other equipment are compatible when using the SDXC Memory Cards. http://panasonic.net/avc/sdcard/information/SDXC.html• Only the cards with capacity listed left can be used.
SDHC Memory Card (4 GB to 32 GB)	
SDXC Memory Card (48 GB, 64 GB)	

- * SD Speed Class is the speed standard regarding continuous writing. Check via the label on the card, etc.

e.g.:

CLASS 



- Please confirm the latest information on the following website.

<http://panasonic.jp/support/global/cs/dsc/>

(This Site is English only.)



Note

- Keep the Memory Card out of reach of children to prevent swallowing.

Inserting and Removing the Card (optional)/the Battery

- Check that this unit is turned off.
- We recommend using a Panasonic card.

1 Slide the release lever in the direction of the arrow and open the card/battery door.

- Always use genuine Panasonic batteries (NCA-YN101G; supplied or DMW-BCK7PP; optional).
- If you use other batteries, we cannot guarantee the quality of this product.

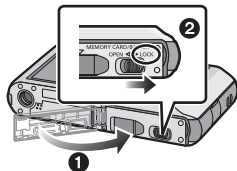
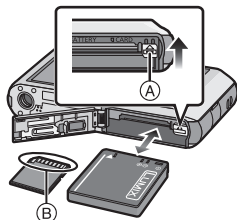
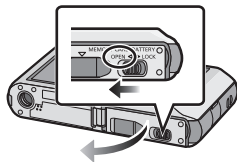
2 **Battery:** Being careful about the battery orientation, insert all the way until you hear a locking sound and then check that it is locked by lever (A). Pull the lever (A) in the direction of the arrow to remove the battery.

Card: Push it securely all the way until you hear a “click” while being careful about the direction in which you insert it. To remove the card, push the card until it clicks, then pull the card out upright.

(B): Do not touch the connection terminals of the card.

3 **1:** Close the card/battery door.

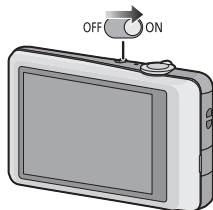
2: Slide the release lever in the direction of the arrow.



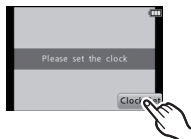
Setting Date/Time (Clock Set)

• The clock is not set when the camera is shipped.


1 Turn the camera on.



2 Touch [Clock Set].



3 Touch the items you wish to set (Year/Month/Day/Hours/Minutes), and set using [▲]/[▼].

• Touch [>] to cancel the date and time settings without setting a date and time.

4 Touch [Set] to set.

5 Touch [Set] in the confirmation screen.

Changing the Clock Setting

Select [Clock Set] in the [Rec] or [Setup] menu.

• It can be changed in steps **3** and **4** to set the clock.

Selecting the [Rec] Mode





1 Touch [].



2 Touch the Recording Mode icon.



■ List of [Rec] Modes


 Intelligent Auto Mode
The subjects are recorded using settings automatically selected by the camera.
 Normal Picture Mode
The subjects are recorded using your own settings.
 Cosmetic Mode
Takes a picture adjusting the skin texture.
MS My Scene Mode
Pictures are taken using previously registered recording scenes.
SCN Scene Mode
This allows you to take pictures that match the scene being recorded.
 Motion Picture Mode
This mode allows you to record motion pictures with audio.

[Rec] Mode: 

Taking pictures using the Automatic Function (: Intelligent Auto Mode)

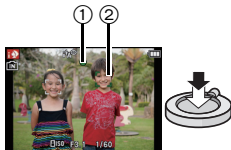
The camera will set the most appropriate settings to match the subject and the recording conditions so we recommend this mode for beginners or those who want to leave the settings to the camera and take pictures easily.

1 Touch [].

2 Touch [].

3 Press the shutter button halfway to focus.

- The focus indication ① (green) lights when the subject is focused.
- The AF area ② is displayed around the subject's face by the Face Detection Function. In other cases, it is displayed at the point on the subject which is in focus.

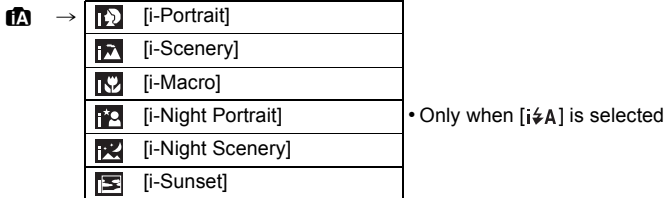


4 Press the shutter button fully (push it in further), and take the picture.




Scene Detection

When the camera identifies the optimum scene, the icon of the scene concerned is displayed in blue for 2 seconds, after which its color changes to the usual red.



- [iA] is set if none of the scenes are applicable, and the standard settings are set.
- When [iP] or [iS] is selected, the camera automatically detects a person's face, and it will adjust the focus and exposure. **(Face Detection)**

Motion Picture Mode

1 Touch [].

2 Touch [].

3 Press the shutter button halfway to focus and then press it fully to start recording.

(A) Available recording time

(B) Elapsed recording time


- After pressing the shutter button fully, release it straight away.
- The focus and zoom are fixed to the setting when recording starts (the first frame).
- The recording state indicator (red) (C) will flash while recording motion pictures.



4 Press the shutter button fully to stop recording.

Note

- Motion pictures can be recorded continuously up to 2 GB.
The maximum available recording time for up to 2 GB only is displayed on the screen.

[Playback] Mode: 


Playing Back Pictures ([Normal Play])

1 Touch [].


- The display switches to normal playback.



2 Drag the screen horizontally.

- After selecting the motion picture, touch [] to start playback.



[Playback] Mode: 

Deleting Pictures

Once deleted, pictures cannot be recovered.

- Pictures on the built-in memory or the card that are being played back will be deleted.

1 Select the picture to be deleted, and then touch [].



2 Touch [Delete Single].

- Confirmation screen is displayed.
Picture is deleted by selecting [Yes].



Setting the Menu

Example: In the [Rec] menu, change [AF Mode] from [■] (1-area-focusing) to [👤] (Face Detection)

1 Touch [MENU].



2 Touch the menu icon.



3 Touch the menu item.



4 Touch the Settings.

- Depending on the menu item, its setting may not appear or it may be displayed in a different way.



■ Close the menu

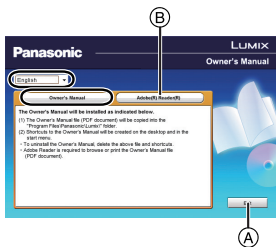
Touch [🏠] several times or press the shutter button halfway.

Reading the Owner's Manual (PDF format)

More detailed instructions on the operation of this camera are contained in “Owner's Manual for advanced features (PDF format)” in the supplied CD-ROM. Install it on your PC to read it.

■ For Windows

- 1** Turn the PC on and insert the CD-ROM containing the Owner's Manual (supplied).
- 2** Click the [Owner's Manual].
- 3** Select the desired language and then click [Owner's Manual] to install.
Ⓐ To return to the install menu.
- 4** Double click the “Owner's Manual” shortcut icon on the desktop.



■ When the Owner's Manual (PDF format) will not open

You will need Adobe Acrobat Reader 5.0 or later or Adobe Reader 7.0 or later to browse or print the Owner's Manual (PDF format).

Insert the CD-ROM containing the Owner's Manual (supplied), click  and then follow the messages on the screen to install.

(Compatible OS: Windows XP SP3/Windows Vista SP2/Windows 7)

- You can download and install a version of Adobe Reader that you can use with your OS from the following Web Site.

<http://get.adobe.com/reader/otherversions>

■ To uninstall the Owner's Manual (PDF format)

Delete the PDF file from the "Program Files\Panasonic\Lumix\" folder.

■ For Mac

1

Turn the PC on and insert the CD-ROM containing the Owner's Manual (supplied).

2

Open the "Manual" folder in the CD-ROM and then copy the PDF file with the desired language inside the folder.

3

Double click the PDF file to open it.


Specifications

Digital Camera:

Information for your safety

Power Source:	DC 5.1 V
Power Consumption:	1.2 W (When recording) 0.7 W (When playing back)

Camera effective pixels	16,100,000 pixels	
Image sensor	1/2.33" CCD, total pixel number 16,600,000 pixels, Primary color filter	
Lens	Optical 4× zoom, f=5 mm to 20 mm (35 mm film camera equivalent: 28 mm to 112 mm)/F3.1 (Wide) to F6.5 (Tele)	
Digital zoom	Max. 4×	
Extended optical zoom	Max. 9× (When set to 3,000,000 pixels [3M] or less)	
Focus range	Normal	50 cm (1.64 feet) (Wide)/1 m (3.28 feet) (Tele) to ∞
	Macro/ Intelligent auto/ Motion picture	5 cm (0.17 feet) (Wide)/1 m (3.28 feet) (Tele) to ∞
	Scene Mode	There may be differences in the above settings.
Shutter system	Electronic shutter+Mechanical shutter	
Burst recording		
Burst speed	Approx. 1.3 pictures/second	
Number of recordable pictures	Depends on the remaining capacity of the built-in memory/card.	

Hi-speed burst	
Burst speed	Approx. 4.4 pictures/second [3M (4:3), 2.5M (3:2), 2M (16:9) or 2.5M (1:1) is selected as the picture size.]
Number of recordable pictures	When using the built-in memory: Approx. 15 pictures (immediately after formatting) When using a Card: Max. 100 pictures (differs depending on the type of Card and the recording conditions)
Shutter speed	8 seconds to 1/1600th of a second [Starry Sky] Mode: 15 seconds, 30 seconds, 60 seconds
Exposure (AE)	Program AE Exposure compensation (1/3 EV Step, -2 EV to +2 EV)
Metering mode	Multiple
LCD monitor	3.0" TFT LCD (3:2) (Approx. 230,000 dots) (field of view ratio about 100%) Touch panel
Flash range	Approx. 40 cm (1.32 feet) to 3.3 m (10.8 feet) (Wide, [ ISO] is set)
Microphone	Monaural
Speaker	Monaural
Recording media	Built-in Memory (Approx. 84 MB)/SD Memory Card/ SDHC Memory Card/SDXC Memory Card
Recording file format	
Still Picture	JPEG (based on "Design rule for Camera File system", based on "Exif 2.3" standard)/DPOF corresponding
Motion pictures	"QuickTime Motion JPEG" (motion pictures with audio)
Interface	
Digital	"USB 2.0" (High Speed)
Analog video/ audio	NTSC, Audio line output (monaural)
Terminal	
[AV OUT/ DIGITAL]	Dedicated jack (8 pin)

Dimensions (excluding the projecting parts)	Approx. 95.2 mm (W)×56.3 mm (H)×19.4 mm (D) [3.75"(W)×2.22"(H)×0.76"(D)]
Mass (weight)	Approx. 126 g/0.28 lb (with card and battery) Approx. 109 g/0.24 lb (excluding card and battery)
Operating temperature	0 °C to 40 °C (32 °F to 104 °F)
Operating humidity	10%RH to 80%RH
Language select	[ENGLISH]/[ESPAÑOL]

Battery Charger (Panasonic DE-A91B):

Information for your safety

Input:	~ 110 V to 240 V, 50/60 Hz, 0.2 A
Output:	=== 4.2 V, 0.43 A

Equipment mobility:

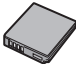



Movable

Battery Pack (lithium-ion) (Panasonic NCA-YN101G):

Information for your safety

Voltage/capacity:	3.6 V/660 mAh
--------------------------	---------------

Digital Camera Accessory System

Accessory#	Illustration	Description
DMW-BCK7PP		Battery Pack
DMW-AC5PP		AC Adaptor*
DMW-DCC10		DC Coupler*
RP-SDU64GE1K RP-SDU32GU1K RP-SDU16GU1K RP-SDU08GU1K RP-SDU04GU1K		Class 10 64 GB SDXC Memory Card Class 10 32 GB SDHC Memory Card Class 10 16 GB SDHC Memory Card Class 10 8 GB SDHC Memory Card Class 10 4 GB SDHC Memory Card
RP-SDL16GU1K RP-SDL08GU1K RP-SDL04GU1K RP-SDL02GU1K		Class 4 16 GB SDHC Memory Card Class 4 8 GB SDHC Memory Card Class 4 4 GB SDHC Memory Card Class 4 2 GB SD Memory Card

Product numbers correct as of May 2011. These may be subject to change.

* The AC Adaptor (optional) can only be used with the designated Panasonic DC Coupler (optional). The AC adaptor (optional) cannot be used by itself.

• NOTE: Accessories and/or model numbers may vary between countries. Consult your local dealer.

Digital Camera Accessory Order Form

Please photocopy this form when placing an order.

1. Digital Camera Model # _____

2. Items Ordered

Accessory #	Description	Price Each	Quantity	Total Price
Subtotal				
Your State & Local Sales Tax				
Shipping & Handling				6.95
Total Enclosed				

3. Method of payment (check one)

- Check of Money Order enclosed (NO C.O.D.SHIPMENTS)
- VISA Credit Card # _____
- MasterCard Expiration Date _____
- Discover Customer Signature _____

Make Check or Money Order to: PANASONIC ACCESSORIES

(Please do not send cash)

4. Shipping information (UPS delivery requires complete street address)

Ship To:

Mr.

Mrs.

Ms. _____

First

Last

Phone#:

Day () _____

Street Address

Night () _____

City

State

Zip

TO OBTAIN ANY OF OUR DIGITAL CAMERA ACCESSORIES YOU CAN DO ANY OF THE FOLLOWING:

VISIT YOUR LOCAL PANASONIC DEALER

OR

CALL PANASONIC'S ACCESSORY ORDER LINE AT 1-800-332-5368

[6 AM-6 PM M-F, PACIFIC TIME]

OR

MAIL THIS ORDER TO: PANASONIC SERVICE AND TECHNOLOGY COMPANY

ACCESSORY ORDER OFFICE

20421 84th Avenue South Kent, WA. 98032

Limited Warranty (ONLY FOR U.S.A. AND PUERTO RICO)

**Panasonic Consumer Electronics Company,
Division of Panasonic Corporation of North America**
One Panasonic Way, Secaucus, New Jersey 07094

Panasonic Digital Still Camera Products Limited Warranty

Limited Warranty Coverage (For USA and Puerto Rico Only)

If your product does not work properly because of a defect in materials or workmanship, Panasonic Consumer Electronics Company (referred to as “the warrantor”) will, for the length of the period indicated on the chart below, which starts with the date of original purchase (“warranty period”), at its option either (a) repair your product with new or refurbished parts, (b) replace it with a new or a refurbished equivalent value product, or (c) refund your purchase price. The decision to repair, replace or refund will be made by the warrantor.

Product or Part Name	Parts	Labor
Digital Still Camera	1 year	1 year
CCD	6 months	90 days
SD Memory Cards, Rechargeable Battery Pack (defective exchange)	90 days	Not Applicable

During the “Labor” warranty period there will be no charge for labor. During the “Parts” warranty period, there will be no charge for parts. This Limited Warranty excludes both parts and labor for non-rechargeable batteries, antennas, and cosmetic parts (cabinet). This warranty only applies to products purchased and serviced in the United States or Puerto Rico. This warranty is extended only to the original purchaser of a new product which was not sold “as is”.

Mail-In Service

For assistance in the U.S.A. and Puerto Rico in obtaining repairs, please ship the product prepaid to:

Panasonic Exchange Center
4900 George McVay Drive
Suite B
McAllen, TX 78503
panacare@us.panasonic.com

When shipping the unit, carefully pack, include all accessories, and send it prepaid, adequately insured and preferably in the original carton.

When shipping Lithium Ion batteries please visit our Web Site at www.panasonic.com/BatteryHandling as Panasonic is committed to providing the most up to date information. Include a letter detailing the complaint, a return address and provide a daytime phone number where you can be reached. A valid registered receipt is required under the Limited Warranty.

IF REPAIR IS NEEDED DURING THE WARRANTY PERIOD, THE PURCHASER WILL BE REQUIRED TO FURNISH A SALES RECEIPT/PROOF OF PURCHASE INDICATING DATE OF PURCHASE, AMOUNT PAID AND PLACE OF PURCHASE. CUSTOMER WILL BE CHARGED FOR THE REPAIR OF ANY UNIT RECEIVED WITHOUT SUCH PROOF OF PURCHASE.

Limited Warranty Limits And Exclusions

This warranty **ONLY COVERS** failures due to defects in materials or workmanship, and **DOES NOT COVER** normal wear and tear or cosmetic damage. The warranty **ALSO DOES NOT COVER** damages which occurred in shipment, or failures which are caused by products not supplied by the warrantor, or failures which result from accidents, misuse, abuse, neglect, mishandling, misapplication, alteration, faulty installation, set-up adjustments, misadjustment of consumer controls, improper maintenance, power line surge, lightning damage, modification, introduction of sand, humidity or liquids, commercial use such as hotel, office, restaurant, or other business or rental use of the product, or service by anyone other than a Factory Service Center or other Authorized Servicer, or damage that is attributable to acts of God.

THERE ARE NO EXPRESS WARRANTIES EXCEPT AS LISTED UNDER “LIMITED WARRANTY COVERAGE”.

THE WARRANTOR IS NOT LIABLE FOR INCIDENTAL OR CONSEQUENTIAL DAMAGES RESULTING FROM THE USE OF THIS PRODUCT, OR ARISING OUT OF ANY BREACH OF THIS WARRANTY.

(As examples, this excludes damages for lost time, travel to and from the servicer, loss of or damage to media or images, data or other memory or recorded content. The items listed are not exclusive, but for illustration only.)

ALL EXPRESS AND IMPLIED WARRANTIES, INCLUDING THE WARRANTY OF MERCHANTABILITY, ARE LIMITED TO THE PERIOD OF THE LIMITED WARRANTY.

Some states do not allow the exclusion or limitation of incidental or consequential damages, or limitations on how long an implied warranty lasts, so the exclusions may not apply to you.

This warranty gives you specific legal rights and you may also have other rights which vary from state to state. If a problem with this product develops during or after the warranty period, you may contact your dealer or Service Center. If the problem is not handled to your satisfaction, then write to the warrantor's Consumer Affairs Department at the addresses listed for the warrantor.

PARTS AND SERVICE, WHICH ARE NOT COVERED BY THIS LIMITED WARRANTY, ARE YOUR RESPONSIBILITY.

Customer Services Directory (United States and Puerto Rico)

Obtain Product Information and Operating Assistance; locate your nearest Dealer or Service Center; purchase Parts and Accessories; or make Customer Service and Literature requests by visiting our Web Site at:

<http://www.panasonic.com/help>

or, contact us via the web at:

<http://www.panasonic.com/contactinfo>

You may also contact us directly at:

1-800-211-PANA (7262)

Monday-Friday 9am-9pm, Saturday-Sunday 10am-7pm EST

For hearing or speech impaired TTY users, TTY: 1-877-833-8855

Accessory Purchases (United States and Puerto Rico)

Purchase Parts, Accessories and Instruction Books online for all Panasonic Products by visiting our Web Site at:

<http://www.pstc.panasonic.com>

Or, send your request by E-mail to:

npcparts@us.panasonic.com

You may also contact us directly at:

1-800-332-5368 (Phone) 1-800-237-9080 (Fax Only)

(Monday-Friday 9am-9pm EST)

Panasonic Service and Technology Company

20421 84th Avenue South, Kent, WA 98032

(We accept Visa, MasterCard, Discover Card, American Express, and Personal Checks)

For hearing or speech impaired TTY users, TTY: 1-866-605-1277

As of December 2010

- SDXC Logo is a trademark of SD-3C, LLC.
- QuickTime and the QuickTime logo are trademarks or registered trademarks of Apple Inc., used under license therefrom.
- Mac and Mac OS are trademarks of Apple Inc., registered in the U.S. and other countries.
- Windows and Windows Vista are either registered trademarks or trademarks of Microsoft Corporation in the United States and/or other countries.
- This product uses “DynaFont” from DynaComware Corporation. DynaFont is a registered trademark of DynaComware Taiwan Inc.
- Other names of systems and products mentioned in these instructions are usually the registered trademarks or trademarks of the manufacturers who developed the system or product concerned.



Panasonic Consumer Electronics Company,
Division of Panasonic Corporation of North America
One Panasonic Way, Secaucus, NJ 07094

© Panasonic Corporation 2011

Printed in China