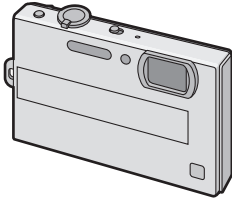


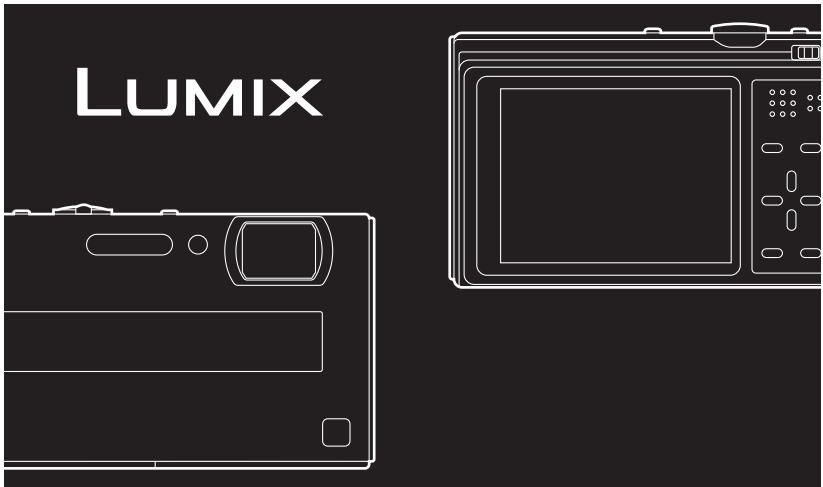
Panasonic®



Basic Operating Instructions

Digital Camera

Model No. **DMC-FP8**



Before connecting, operating or adjusting this product,
please read the instructions completely.



Please also refer to **Operating Instructions (PDF format)** recorded on the CD-ROM containing the **Operating Instructions (supplied)**. You can learn about advanced operation methods and check the Troubleshooting.



For USA and Puerto Rico assistance, please call: 1-800-211-PANA(7262) or,
contact us via the web at: <http://www.panasonic.com/contactinfo>

Dear Customer,

Thank you for choosing Panasonic!

You have purchased one of the most sophisticated and reliable products on the market today. Used properly, we're sure it will bring you and your family years of enjoyment. Please take time to fill in the information on the below. The serial number is on the tag located on the underside of your Camera. Be sure to **retain this manual** as your convenient Camera information source. Please note that the actual controls and components, menu items, etc. of your Digital Camera may look somewhat different from those shown in the illustrations in these Operating Instructions.

Carefully observe copyright laws.

- Recording of pre-recorded tapes or discs or other published or broadcast material for purposes other than your own private use may infringe copyright laws. Even for the purpose of private use, recording of certain material may be restricted.

Model No. _____

Serial No. _____



A lithium ion battery that is recyclable powers the product you have purchased. Please call 1-800-8-BATTERY for information on how to recycle this battery.

Information for Your Safety

WARNING:

TO REDUCE THE RISK OF FIRE, ELECTRIC SHOCK OR PRODUCT DAMAGE,

- **DO NOT EXPOSE THIS APPARATUS TO RAIN, MOISTURE, DRIPPING OR SPLASHING AND THAT NO OBJECTS FILLED WITH LIQUIDS, SUCH AS VASES, SHALL BE PLACED ON THE APPARATUS.**
- **USE ONLY THE RECOMMENDED ACCESSORIES.**
- **DO NOT REMOVE THE COVER (OR BACK); THERE ARE NO USER SERVICEABLE PARTS INSIDE. REFER SERVICING TO QUALIFIED SERVICE PERSONNEL.**

THE SOCKET OUTLET SHALL BE INSTALLED NEAR THE EQUIPMENT AND SHALL BE EASILY ACCESSIBLE.

Product Identification Marking is located on the bottom of units.

FCC Note:

This equipment has been tested and found to comply with the limits for a Class B digital device, pursuant to Part 15 of the FCC Rules. These limits are designed to provide reasonable protection against harmful interference in a residential installation. This equipment generates, uses, and can radiate radio frequency energy and, if not installed and used in accordance with the instructions, may cause harmful interference to radio communications. However, there is no guarantee that interference will not occur in a particular installation. If this equipment does cause harmful interference to radio or television reception, which can be determined by turning the equipment off and on, the user is encouraged to try to correct the interference by one or more of the following measures:

- Reorient or relocate the receiving antenna.
- Increase the separation between the equipment and receiver.
- Connect the equipment into an outlet on a circuit different from that to which the receiver is connected.
- Consult the dealer or an experienced radio/TV technician for help.

FCC Caution: To assure continued compliance, follow the attached installation instructions and use only shielded interface cables with ferrite core when connecting to computer or peripheral devices.

Any changes or modifications not expressly approved by the party responsible for compliance could void the user's authority to operate this equipment.

Declaration of Conformity

Trade Name: Panasonic

Model No.: DMC-FP8

Responsible party: Panasonic Corporation of North America One Panasonic Way,
Secaucus, NJ 07094

Support Contact: Panasonic Consumer Electronics Company 1-800-211-PANA (7262)

This device complies with Part 15 of the FCC Rules. Operation is subject to the following two conditions: (1) This device may not cause harmful interference, and (2) this device must accept any interference received, including interference that may cause undesired operation.

**■ About the battery pack****CAUTION**

Battery pack (Lithium ion battery pack)

- Use the specified unit to recharge the battery pack.
- Do not use the battery pack with equipment other than the specified unit.
- Do not get dirt, sand, liquids, or other foreign matter on the terminals.
- Do not touch the plug terminals (+ and -) with metal objects.
- Do not disassemble, remodel, heat or throw into fire.

If any electrolyte should come into contact with your hands or clothes, wash it off thoroughly with water.

If any electrolyte should come into contact with your eyes, never rub the eyes. Rinse eyes thoroughly with water, and then consult a doctor.

CAUTION

Danger of explosion if battery is incorrectly replaced. Replace only with the same or equivalent type recommended by the manufacturer. Dispose of used batteries according to the manufacturer's instructions.

- Do not heat or expose to flame.
- Do not leave the battery(ies) in an automobile exposed to direct sunlight for a long period of time with doors and windows closed.

Warning

Risk of fire, explosion and burns. Do not disassemble, heat above 60 °C (140 °F) or incinerate.

■ About the battery charger

CAUTION!

DO NOT INSTALL OR PLACE THIS UNIT IN A BOOKCASE, BUILT-IN CABINET OR IN ANOTHER CONFINED SPACE. ENSURE THE UNIT IS WELL VENTILATED. TO PREVENT RISK OF ELECTRIC SHOCK OR FIRE HAZARD DUE TO OVERHEATING, ENSURE THAT CURTAINS AND ANY OTHER MATERIALS DO NOT OBSTRUCT THE VENTILATION VENTS.

Battery charger

This battery charger operates on AC between 110 V and 240 V.

But

- In the U.S.A. and Canada, the battery charger must be connected to a 120 V AC power supply only.
- When connecting to an AC supply outside of the U.S.A. or Canada, use a plug adaptor to suit the AC outlet configuration.

■ Cautions for Use

- Do not use any other AV cables except the supplied one.
- Do not use any other cables except a genuine Panasonic component cable (DMW-HDC2; optional).
- Do not use any other USB connection cables except the supplied one.

Keep the camera as far away as possible from electromagnetic equipment (such as microwave ovens, TVs, video games etc.).

- If you use the camera on top of or near a TV, the pictures and sound on the camera may be disrupted by electromagnetic wave radiation.
- Do not use the camera near cell phones because doing so may result in noise adversely affecting the pictures and sound.
- Recorded data may be damaged, or pictures may be distorted, by strong magnetic fields created by speakers or large motors.
- Electromagnetic wave radiation generated by microprocessors may adversely affect the camera, disturbing the pictures and sound.
- If the camera is adversely affected by electromagnetic equipment and stops functioning properly, turn the camera off and remove the battery or disconnect AC adaptor (DMW-AC5PP; optional). Then reinsert the battery or reconnect AC adaptor and turn the camera on.

Do not use the camera near radio transmitters or high-voltage lines.

- If you record near radio transmitters or high-voltage lines, the recorded pictures and sound may be adversely affected.

■ Care of the camera

- Do not touch the lens or the sockets with dirty hands. Also, be careful not to allow liquids, sand and other foreign matter to get into the space around the lens, buttons etc.
- Do not strongly shake or bump the camera by dropping or hitting it. Do not subject to strong pressure.

The camera may malfunction, recording pictures may become impossible, or the lens, the LCD monitor or the external case may be damaged.

- We strongly recommend you do not leave the camera in your trousers pocket when you sit down or forcefully insert it into a full or tight bag etc. Damage to the LCD monitor or personal injury may result.
- Do not attach any other items to the hand strap that's included with your camera. While being stored, that item can rest against the LCD monitor and damage it.
- **Be particularly careful in the following places as they may cause this unit to malfunction.**
 - Places with a lot of sand or dust.
 - Places where water can come into contact with this unit such as when using it on a rainy day or on a beach.
- **This camera is not waterproof. If water or seawater splashes on the camera, use a dry cloth to wipe the camera body carefully.**
If the unit does not operate normally, please contact the dealer where you purchased the camera or the repair service center.



■ About Condensation (When the lens is fogged up)

- Condensation occurs when the ambient temperature or humidity changes. Be careful of condensation since it causes lens stains, fungus and camera malfunction.
- If condensation occurs, turn the camera off and leave it for about 2 hours. The fog will disappear naturally when the temperature of the camera becomes close to the ambient temperature.

■ About cards that can be used in this unit

You can use an SD Memory Card and SDHC Memory Card.

- When the term **card** is used in these operating instructions this refers to the following types of Memory Cards.
 - SD Memory Card (8 MB to 2 GB)
 - SDHC Memory Card (4 GB to 32 GB)

More specific information about memory cards that can be used with this unit.

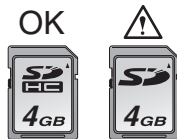
- You can only use an SDHC Memory Card if using cards with 4 GB or more capacity.
- A 4 GB (or more) Memory Card without an SDHC logo is not based on the SD Standard and will not work in this product.

Please confirm the latest information on the following website.

<http://panasonic.jp/support/global/cs/dsc/>

(This Site is English only.)

- Keep the Memory Card out of reach of children to prevent swallowing.



-If you see this symbol-

Information on Disposal in other Countries outside the European Union

This symbol is only valid in the European Union.

If you wish to discard this product, please contact your local authorities or dealer and ask for the correct method of disposal.



Contents

Information for Your Safety.....	2
----------------------------------	---

Before Use

Standard Accessories.....	7
Names of the Components.....	8

Preparation

Charging the Battery.....	10
Inserting and Removing the Card (optional)/the Battery.....	12
Setting Date/Time (Clock Set).....	13
• Changing the clock setting.....	13
Setting the Menu.....	14
• Setting menu items.....	14
Selecting the [REC] Mode.....	16

Basic

Taking pictures using the automatic function	
(A: Intelligent Auto Mode).....	17
• Scene detection.....	18
• AF Tracking Function.....	18
Taking pictures with your favorite settings	
(B: Normal Picture Mode).....	19
• Focusing.....	19
Playing back Pictures ([NORMAL PLAY]).....	20
Deleting Pictures.....	21
• To delete a single picture.....	21
• To delete multiple pictures (up to 50) or all the pictures.....	21

Others

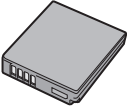
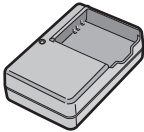





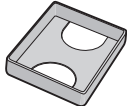
Reading the Operating Instructions (PDF format).....	22
Specifications.....	23
Digital Camera Accessory System.....	26
Digital Camera Accessory Order Form.....	27
Request for Service Notice.....	28
Limited Warranty.....	29
Customer Services Directory.....	31

Standard Accessories

Check that all the accessories are included before using the camera.
Product numbers correct as of July 2009. These may be subject to change.

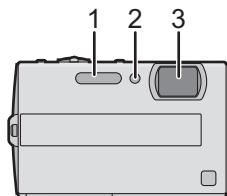
- 1 Battery Pack
(Indicated as **battery pack** or **battery** in the text)
Charge the battery before use.
- 2 Battery Charger
(Indicated as **battery charger** or **charger** in the text)
- 3 USB Connection Cable
- 4 AV Cable
- 5 CD-ROM
 - Software:
Use it to install the software to your PC.
- 6 CD-ROM
 - Operating Instructions
- 7 Hand Strap
- 8 Battery Case

- SD Memory Card and SDHC Memory Card are indicated as **card** in the text.
- **The card is optional.**
You can record or play back pictures on the built-in memory when you are not using a card.
- For information about optional accessories, refer to the "Digital Camera Accessory System".
- If any accessories are lost, customers should contact Panasonic's parts department at 1 800 833-9626 for further information about obtaining replacement parts.

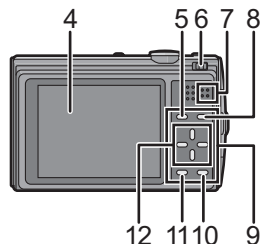
1  DMW-BCF10PP	2  DE-A59B
3  K1HA08AD0001	4  K1HA08CD0027
5 	6  VFF0528
7  VFC4297	8  VGQ0D56

Names of the Components

- 1 Flash
- 2 Self-timer indicator
- 3 AF assist lamp

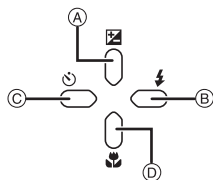


- 4 LCD monitor
- 5 [MODE] button
- 6 [REC]/[PLAYBACK] selector switch
- 7 Speaker
- 8 [MENU/SET] button
- 9 Keypad light
- 10 [Q.MENU]/Delete button
- 11 [DISPLAY] button

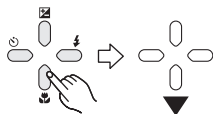


12 Cursor buttons

- (A): ▲/Exposure compensation/Auto Bracket/White balance fine adjustment
- (B): ►/Flash setting button
- (C): ◀/Self-timer button
- (D): ▼/Macro Mode AF Tracking



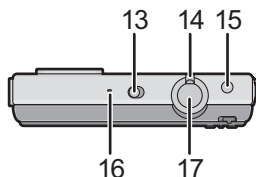
In these operating instructions, the cursor buttons are described as shown in the figure below or described with ▲/▼/◀/►.
e.g.: When you press the ▼ (down) button



or

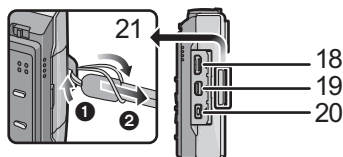
Press ▼

- 13 Camera ON/OFF switch
- 14 Zoom lever
- 15 Intelligent auto button
- 16 Microphone
- 17 Shutter button



- 18 [COMPONENT OUT] socket
- 19 [AV OUT/DIGITAL] socket
- 20 [DC IN] socket

- 21 Hand strap eyelet
 - Always use a genuine Panasonic AC adaptor (DMW-AC5PP; optional).
 - When using an AC adaptor, use the AC cable supplied with the AC adaptor.
 - This camera cannot charge the battery even when the AC adaptor (DMW-AC5PP; optional) is connected to it.
 - We recommend you use a battery with sufficient battery power or the AC adaptor when recording motion pictures.
 - If while recording motion pictures using the AC adaptor the power supply is cut off due to a power cut or if the AC adaptor is disconnected etc., the motion picture being recorded will not be recorded.



- 21 Hand strap eyelet

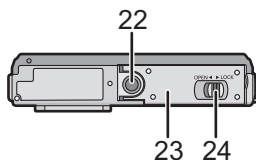
- Be sure to attach the hand strap when using the camera to ensure that you will not drop it.

- 22 Tripod receptacle

- When you use a tripod, make sure the tripod is stable when the camera is attached to it.

- 23 Card/Battery door

- 24 Release lever



Charging the Battery

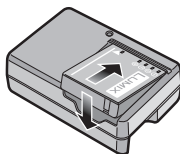
■ About batteries that you can use with this unit

The battery that can be used with this unit is DMW-BCF10PP.

It has been found that counterfeit battery packs which look very similar to the genuine product are made available to purchase in some markets. Some of these battery packs are not adequately protected with internal protection to meet the requirements of appropriate safety standards. There is a possibility that these battery packs may lead to fire or explosion. Please be advised that we are not liable for any accident or failure occurring as a result of use of a counterfeit battery pack. To ensure that safe products are used we would recommend that a genuine Panasonic battery pack is used.

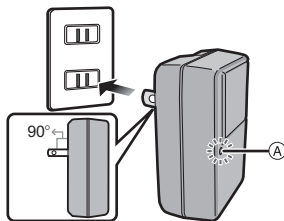
- Use the dedicated charger and battery.
- The camera has a function for distinguishing batteries which can be used safely. The dedicated battery (DMW-BCF10PP) supports this function. The only batteries suitable for use with this unit are genuine Panasonic products and batteries manufactured by other companies and certified by Panasonic. (Batteries which do not support this function cannot be used). Panasonic cannot in any way guarantee the quality, performance or safety of batteries which have been manufactured by other companies and are not genuine Panasonic products.
- The battery is not charged when the camera is shipped. Charge the battery before use.
- Charge the battery with the charger indoors.
- Charge the battery in a temperature between 10 °C to 35 °C (50 °F to 95 °F). (The battery temperature should also be the same.)

- 1 Attach the battery with attention to the direction of the battery.

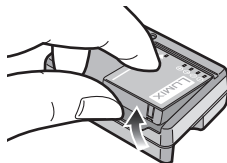


- 2 Connect the charger to the electrical outlet.

- Charging starts when the [CHARGE] indicator (A) lights green.
- Charging is complete when the [CHARGE] indicator (A) turns off.



- 3 Detach the battery after charging is completed.



 **Note**

- After charging is completed, be sure to disconnect the power supply device from the electrical outlet.
- The battery becomes warm after using it and during and after charging. The camera also becomes warm during use. This is not a malfunction.
- The battery will be exhausted if left for a long period of time after being charged.
- The battery can be recharged even when it still has some charge left, but it is not recommended that the battery charge be frequently topped up while the battery is fully charged. (Since characteristic swelling may occur.)
- When the operating time of the camera becomes extremely short even after properly charging the battery, the life of the battery may have expired. Buy a new battery.
- **Do not leave any metal items (such as clips) near the contact areas of the power plug. Otherwise, a fire and/or electric shocks may be caused by short-circuiting or the resulting heat generated.**

■ The battery life

Number of recordable pictures	Approx. 380 pictures	By CIPA standard in Normal Picture Mode
Recording time	Approx. 190 min	

Recording conditions by CIPA standard

- CIPA is an abbreviation of [Camera & Imaging Products Association].
- Temperature: 23 °C (73.4 °F)/Humidity: 50% when LCD monitor is on.*
- Using a Panasonic SD Memory Card (32 MB).
- Using the supplied battery.
- Starting recording 30 seconds after the camera is turned on. (When the optical image stabilizer function is set to [AUTO].)
- **Recording once every 30 seconds** with full flash every second recording.
- Rotating the zoom lever from Tele to Wide or vice versa in every recording.
- Turning the camera off every 10 recordings and leaving it until the temperature of the battery decreases.
- * The number of recordable pictures decreases in Auto Power LCD mode, Power LCD mode and High angle mode.

The number of recordable pictures varies depending on the recording interval time. If the recording interval time becomes longer, the number of recordable pictures decreases. [e.g. When recording once every 2 minutes, the number of recordable pictures decreases to about 95.]

Playback time	Approx. 360 min
----------------------	------------------------

The number of recordable pictures and playback time will vary depending on the operating conditions and storing condition of the battery.

■ Charging

Charging time	Approx. 130 min
----------------------	------------------------

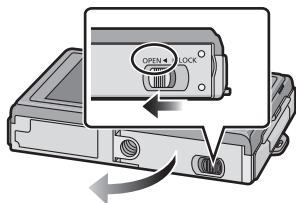
- **The indicated charging time is for when the battery has been discharged completely. The charging time may vary depending on how the battery has been used. The charging time for the battery in hot/cold environments or a battery that has not been used for long time may be longer than normal.**

Inserting and Removing the Card (optional)/the Battery

- Check that this unit is turned off.
- We recommend using a Panasonic card.

1 Slide the release lever in the direction of the arrow and open the card/battery door.

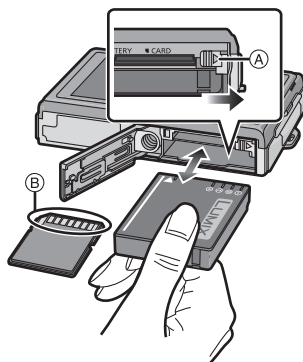
- Always use genuine Panasonic batteries (DMW-BCF10PP).
- If you use other batteries, we cannot guarantee the quality of this product.



2 Battery: Insert until it is locked by the lever (A) being careful about the direction you insert it. Pull the lever (A) in the direction of the arrow to remove the battery.

Card: Push it fully until it clicks being careful about the direction you insert it. To remove the card, push the card until it clicks, then pull the card out upright.

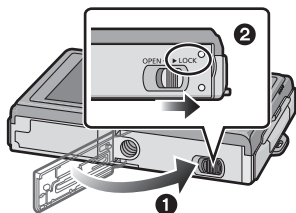
- (B): Do not touch the connection terminals of the card.
- The card may be damaged if it is not fully inserted.



3 1: Close the card/battery door.

2: Slide the release lever in the direction of the arrow.

- If the card/battery door cannot be completely closed, remove the card, check its direction and then insert it again.

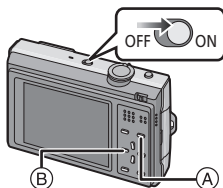


Setting Date/Time (Clock Set)

- The clock is not set when the camera is shipped.

1 Turn the camera on.

- The [PLEASE SET THE CLOCK] message appears. (This message does not appear in [PLAYBACK] Mode.)
- (A) [MENU/SET] button
 (B) Cursor buttons



2 Press [MENU/SET].



3 Press ◀/▶ to select the items (year, month, day, hour, minute, display sequence or time display format), and press ▲/▼ to set.

- ☒: Cancel without setting the clock.



4 Press [MENU/SET] to set.

- After completing the clock settings, turn the camera off. Then turn the camera back on, switch to Recording Mode, and check that the display reflects the settings that were performed.
- When [MENU/SET] has been pressed to complete the settings without the clock having been set, set the clock correctly by following the "Changing the clock setting" procedure below.

Changing the clock setting

Select [CLOCK SET] in the [REC] or [SETUP] menu, and press ▶.

- It can be changed in steps 3 and 4 to set the clock.
- The clock setting is maintained for 3 months using the built-in clock battery even without the battery. (Leave the charged battery in the unit for 24 hours to charge the built-in battery.)

Setting the Menu

The camera comes with menus that allow you to choose the settings for taking pictures and playing them back just as you like and menus that enable you to have more fun with the camera and use it more easily.

In particular, the [SETUP] menu contains some important settings relating to the camera's clock and power. Check the settings of this menu before proceeding to use the camera.

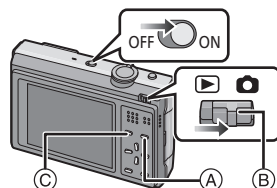
Setting menu items

This section describes how to select the Normal Picture Mode settings, and the same setting can be used for the [PLAYBACK] menu and [SETUP] menu as well.

Example: Setting [AF MODE] from [□] to [⦿] in the Normal Picture Mode

1 Turn the camera on.

- (A) [MENU/SET] button
- (B) [REC]/[PLAYBACK] selector switch
- (C) [MODE] button



2 Slide the [REC]/[PLAYBACK] selector switch to [⏪], and then press [MODE].

- When selecting the [PLAYBACK] Mode menu settings, set the [REC]/[PLAYBACK] selector switch to [▶], and proceed to step 4.

3 Press ▲/▼ to select [NORMAL PICTURE], and then press [MENU/SET].

4 Press [MENU/SET] to display the menu.

- You can switch menu screens from any menu item by rotating the zoom lever.



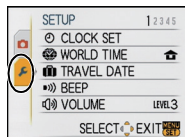
MENU
SET

Switching to the [SETUP] menu

1 Press ◀.



2 Press ▼ to select the [SETUP] menu icon [⌂].



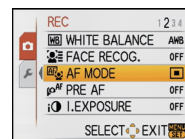
3 Press ▶.

- Select a menu item next and set it.



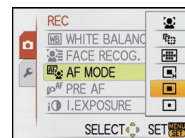
5 Press ▲/▼ to select [AF MODE].

- Select the item at the very bottom, and press ▼ to move to the second screen.

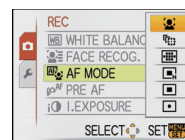


6 Press ▶.

- Depending on the item, its setting may not appear or it may be displayed in a different way.



7 Press ▲/▼ to select [⦿].



8 Press [MENU/SET] to set.



9 Press [MENU/SET] to close the menu.

Mode switching

Selecting the [REC] Mode

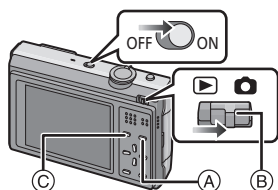
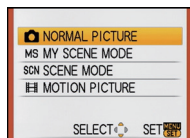
When the [REC] Mode is selected, the camera can be set to the Intelligent Auto Mode in which the optimal settings are established in line with the subject to be recorded and the recording conditions, or to the Scene Mode which enables you to take pictures that match the scene being recorded.

 **Intelligent Auto Mode**

The subjects are recorded using settings automatically selected by the camera.

■ To select a [REC] modes from the [REC] modes list
1 Turn the camera on.

- (A) [MENU/SET] button
- (B) [REC]/[PLAYBACK] selector switch
- (C) [MODE] button


2 Slide the [REC]/[PLAYBACK] selector switch to [CAMERA].
3 Press [MODE].
4 Press ▲/▼ to select the mode.
5 Press [MENU/SET].

■ List of [REC] Modes
 **Normal Picture Mode**

The subjects are recorded using your own settings.

MS My Scene Mode

Pictures are taken using previously registered recording scenes.

SCN Scene Mode

This allows you to take pictures that match the scene being recorded.

 **Motion Picture Mode**

This mode allows you to record motion pictures with audio.

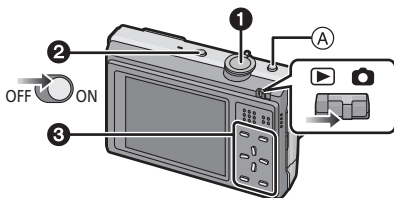
[REC] Mode: **iA**

Taking pictures using the automatic function

(iA): Intelligent Auto Mode

The camera will set the most appropriate settings to match the subject and the recording conditions so we recommend this mode for beginners or those who want to leave the settings to the camera and take pictures easily.

- The following functions are activated automatically.
 - Scene detection/[STABILIZER]/[INTELLIGENT ISO]/Face detection/Quick AF/[I.EXPOSURE]/Digital Red-eye Correction/Backlight Compensation
- The keypad light **3** lights when you turn this unit on **2**. (It turns off after about 1 second.)
 - 1**: Shutter button



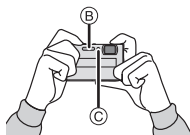
1 Slide the [REC]/[PLAYBACK] selector switch to **[📷]**.

2 Press **[iA]** **(A)**.

- Pressing **[iA]** again takes you back to the previous mode.

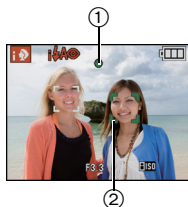
3 Hold this unit gently with both hands, keep your arms still at your side and stand with your feet slightly apart.

- (B)** Flash
- (C)** AF assist lamp



4 Press the shutter button halfway to focus.

- The focus indication **1** (green) lights when the subject is focused.
- The AF area **2** is displayed around the subject's face by the face detection function. In other cases, it is displayed at the point on the subject which is in focus.
- The focus range is 5 cm (0.17 feet) (Wide)/30 cm (0.99 feet) (Tele) to ∞.



5 Press the shutter button fully (push it in further), and take the picture.








- The access indication lights red when pictures are being recorded on the built-in memory (or the card).



- Do not turn this unit off, remove its battery or card, or disconnect the AC adaptor (DMW-AC5PP; optional) when the access indication is lit [when pictures are being written, read or deleted, or the built-in memory or the card is being formatted]. Furthermore, do not subject the camera to vibration, impact or static electricity. The card or the data on the card may be damaged, and this unit may no longer operate normally.
If operation fails due to vibration, impact or static electricity, perform the operation again.

Scene detection

When the camera identifies the optimum scene, the icon of the scene concerned is displayed in blue for 2 seconds, after which its color changes to the usual red.

 →	 [i-PORTRAIT]	
	 [i-SCENERY]	
	 [i-MACRO]	
	 [i-NIGHT PORTRAIT]	• Only when [⚡A] is selected
	 [i-NIGHT SCENERY]	
	 [i-BABY]*	

- [iA] is set if none of the scenes are applicable, and the standard settings are set.
- When [iP], [iS] or [iM] is selected, the camera automatically detects a person's face, and it will adjust the focus and exposure. **(Face detection)**
- If a tripod is used, for instance, and the camera has judged that camera shake is minimal when the Scene Mode has been identified as [iS], the shutter speed will be set to a maximum of 8 seconds. Take care not to move the camera while taking pictures.
- When [FACE RECOG.] is set to [ON], and the face similar to the registered face is detected, [R] is displayed in the top right of [iP], [iS] and [iM].
- * When [FACE RECOG.] is set to [ON], [iB] will be displayed for birthdays of registered faces already set only when the face of a person 3 years old or younger is detected.

AF Tracking Function

It is possible to set the focus to the specified subject. Focus will keep following the subject automatically even if it moves.

1 Press ▲.

- [AF-ON] is displayed in the upper left of the screen.
- AF Tracking frame is displayed in the center of the screen.
- Press ▲ again to cancel.



2 Bring the subject to the AF tracking frame, and press ▼ to lock the subject.

- AF tracking frame will turn yellow.
- An optimum scene for the specified subject will be chosen.
- Press ▲ to cancel.



[REC] Mode: 

Taking pictures with your favorite settings

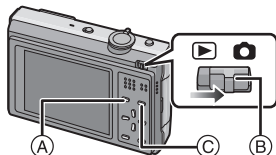
: Normal Picture Mode

The camera automatically sets the shutter speed and the aperture value according to the brightness of the subject.

You can take pictures with greater freedom by changing various settings in [REC] menu.

1 Slide the [REC]/[PLAYBACK] selector switch to , and then press [MODE].

- (A) [MODE] button
- (B) [REC]/[PLAYBACK] selector switch



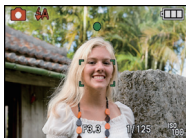
2 Press / to select [NORMAL PICTURE], and then press [MENU/SET].

- (C) [MENU/SET] button

3 Aim the AF area at the point you want to focus on.

4 Press the shutter button halfway to focus.

- The focus indication (green) lights when the subject is focused.
- The focus range is 30 cm (0.99 feet) to ∞ .



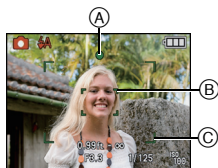
5 Press the halfway pressed shutter button fully to take a picture.

- The access indication lights red when pictures are being recorded on the built-in memory (or the card).



Focusing

Aim the AF area at the subject, and then press the shutter button halfway.




Focus	When the subject is focused	When the subject is not focused
Focus indication	On	Blinks
AF area	White → Green	White → Red
Sound	Beeps 2 times	Beeps 4 times

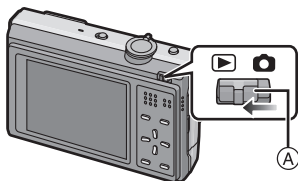
- (A) Focus indication
- (B) AF area (normal)
- (C) AF area (when using the digital zoom or when it is dark)

[PLAYBACK] Mode: 



Playing back Pictures ([NORMAL PLAY])

1 Slide the [REC]/[PLAYBACK] selector switch to .

- Normal playback is set automatically in the following cases.
 - When the mode is switched from the [REC] to [PLAYBACK].
 - When the camera is turned on while the [REC]/[PLAYBACK] selector switch was at .











2 Press / to select the picture.

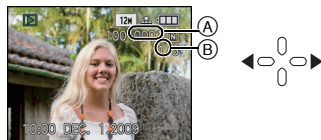
- : Play back the previous picture
- : Play back the next picture


■ Fast forwarding/Fast rewinding

Press and hold /  during playback.

- : Fast rewind
- : Fast forward

- The file number  and the picture number  only change one by one. Release /  when the number of the desired picture appears to play back the picture.
- If you keep pressing / , the number of pictures forwarded/rewound increases.



[PLAYBACK] Mode: 

Deleting Pictures


Once deleted, pictures cannot be recovered.

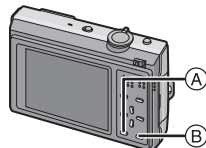
- Pictures on the built-in memory or the card, that are being played back will be deleted.


To delete a single picture

1 Select the picture to be deleted, and then press .

(A) [DISPLAY] button

(B)  button



2 Press  to select [YES] and then press [MENU/SET].



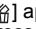
To delete multiple pictures (up to 50) or all the pictures

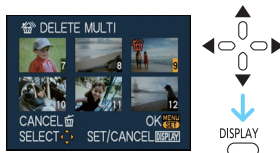
1 Press .

2 Press / to select [DELETE MULTI] or [DELETE ALL] and then press [MENU/SET].

- [DELETE ALL] → step 5.

3 Press /// to select the picture, and then press [DISPLAY] to set. (Repeat this step.)

-  appears on the selected pictures. If [DISPLAY] is pressed again, the setting is canceled.



4 Press [MENU/SET].

5 Press  to select [YES] and then press [MENU/SET] to set.

Reading the Operating Instructions (PDF format)

- You have practised the basic operations introduced in these operating instructions and want to progress to advanced operations.
- You want to check the Troubleshooting.

In these kinds of situations refer to Operating Instructions (PDF format) recorded on the CD-ROM containing the Operating Instructions (supplied).

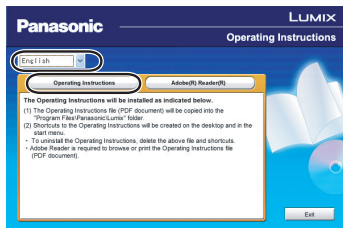
■ For Windows

1 Turn the PC on and insert the CD-ROM containing the Operating Instructions (supplied).

2 Select the desired language and then click [Operating Instructions] to install.

(Example: When an English language OS)

3 Double click the “Operating Instructions” shortcut icon on the desktop.



■ When the Operating Instructions (PDF format) will not open

You will need Adobe Acrobat Reader 5.0 or later or Adobe Reader 7.0 or later to browse or print the Operating Instructions (PDF format).

Download and install a version of Adobe Reader that you can use with your OS from the following Web Site.

http://www.adobe.com/products/acrobat/readstep2_allversions.html

■ If using Windows 2000 SP4/Windows XP SP2 or SP3/Windows Vista and SP1

Insert the CD-ROM containing the Operating Instructions (supplied), click [Adobe(R) Reader(R)] and then follow the messages on the screen to install.

■ To uninstall the Operating Instructions (PDF format)

Delete the PDF file from the “Program Files\Panasonic\Lumix” folder.

- When the contents in the Program Files folder cannot be displayed, click the [Show the contents of this folder] to display them.

■ For Macintosh

1 Turn the PC on and insert the CD-ROM containing the Operating Instructions (supplied).

2 Open the “Manual” folder in the CD-ROM and then copy the PDF file with the desired language inside the folder.

3 Double click the PDF file to open it.

Specifications

Digital Camera: Information for your safety

Power Source:	DC 5.1 V
Power Consumption:	1.1 W (When recording) 0.6 W (When playing back)

Camera effective pixels: 12,100,000 pixels

Image sensor: 1/2.33" CCD, total pixel number 12,700,000 pixels, Primary color filter

Lens: Optical 4.6×zoom, f=5.0 mm to 23 mm (35 mm film camera equivalent: 28 mm to 128 mm)/F3.3 to F5.9

Digital zoom: Max. 4×

Extra optical zoom: Max. 9.1×

Focus: Normal/AF Macro/Macro zoom/Face detection/AF Tracking/
11-area-focusing/1-area-focusing (High speed)/
1-area-focusing/Spot-focusing

Focus range: Normal: 30 cm (0.99 feet) to ∞

Macro/Intelligent auto:

5 cm (0.17 feet) (Wide)/30 cm (0.99 feet) (Tele) to ∞

Scene mode: There may be differences in the above settings.

Shutter system: Electronic shutter+Mechanical shutter

Motion picture

recording:

1280×720 pixels (30 frames/second, only when using a Card)/

848×480 pixels (30 frames/second, only when using a Card)/

640×480 pixels (30 frames/second, only when using a Card)/

320×240 pixels (30 frames/second)

With audio

Burst recording

Burst speed: Approx. 2.3 pictures/second

Number of recordable pictures: Max. 5 pictures (Standard), max. 3 pictures (Fine)

Hi-speed burst

Burst speed: Approx. 10 pictures/second (Speed priority)

Approx. 6 pictures/second (Image priority)

(3M (4:3), 2.5M (3:2) or 2M (16:9) is selected as the picture size.)

Number of recordable

pictures: Approx. 15 to 100

ISO sensitivity (Standard Output Sensitivity):	AUTO/80/100/200/400/800/1600 [HIGH SENS.] mode: 1600 to 6400
Shutter speed:	8 seconds to 1/1300th of a second [STARRY SKY] mode: 15 seconds, 30 seconds, 60 seconds
White balance:	Auto white balance/Daylight/Cloudy/Shade/Incandescent lights/White set
Exposure (AE):	Programme AE Exposure compensation (1/3 EV Step, -2 EV to +2 EV)
Metering mode:	Multiple
LCD monitor:	2.7" TFT LCD (Approx. 230,000 dots) (field of view ratio about 100%)
Flash:	Flash range: [ISO AUTO] Approx. 30 cm (0.99 feet) to 5.5 m (18.0 feet) (Wide) AUTO, AUTO/Red-eye reduction, Forced flash ON (Forced ON/Red-eye reduction), Slow sync./Red-eye reduction, Forced flash OFF
Microphone:	Monaural
Speaker:	Monaural
Recording media:	Built-in Memory (Approx. 40 MB)/SD Memory Card/SDHC Memory Card
Picture size	
Still picture:	When the aspect ratio setting is [4:3] 4000×3000 pixels, 3264×2448 pixels, 2560×1920 pixels, 2048×1536 pixels, 1600×1200 pixels, 640×480 pixels When the aspect ratio setting is [3:2] 4000×2672 pixels, 3264×2176 pixels, 2560×1712 pixels, 2048×1360 pixels When the aspect ratio setting is [16:9] 4000×2248 pixels, 3264×1840 pixels, 2560×1440 pixels, 1920×1080 pixels
Motion pictures:	1280×720 pixels (Only when using a Card)/ 848×480 pixels (Only when using a Card)/ 640×480 pixels (Only when using a Card)/ 320×240 pixels
Quality:	Fine/Standard
Recording file format	
Still Picture:	JPEG (based on "Design rule for Camera File system", based on "Exif 2.21" standard)/DPOF corresponding
Pictures with audio:	JPEG (based on "Design rule for Camera File system", based on "Exif 2.21" standard)+ "QuickTime" (pictures with audio)
Motion pictures:	"QuickTime Motion JPEG" (motion pictures with audio)

Interface	
Digital:	“USB 2.0” (High Speed)
Analogue video/ audio:	NTSC, Component Audio line output (monaural)
Terminal	
[COMPONENT OUT]:	Dedicated jack (10 pin)
[AV OUT/DIGITAL]:	Dedicated jack (8 pin)
[DC IN]:	Dedicated jack (2 pin)
Dimensions:	Approx. 95.7 mm (W)×59.6 mm (H)×20.2 mm (D) [3 6/8" (W)×2 3/8"(H)×6/8" (D)] (excluding the projecting parts)
Mass(weight)	Approx. 131 g/4.62 oz (excluding card and battery) Approx. 153 g/5.40 oz (with card and battery)
Operating temperature:	0 °C to 40 °C (32 °F to 104 °F)
Operating humidity:	10% to 80%
Language select:	[ENGLISH]/[ESPAÑOL]
Battery Charger	
(Panasonic DE-A59B):	Information for your safety

Input:	110 V to 240 V ~ 50/60 Hz, 0.2 A
Output:	CHARGE 4.2 V === 0.65 A





Equipment mobility: Transportable

**Battery Pack
(lithium-ion)**

**(Panasonic
DMW-BCF10PP):** Information for your safety

Voltage/capacity:	3.6 V/940 mAh
--------------------------	---------------

Digital Camera Accessory System

Accessory#	Illustration	Description
DMW-BCF10PP		Battery Pack
DMW-AC5PP		AC Adaptor
DMW-HDC2		Component Cable
RP-SDW32GU1K RP-SDW16GU1K RP-SDW08GU1K RP-SDW04GU1K RP-SDW02GU1K		Class10 32 GB SDHC Memory Card Class10 16 GB SDHC Memory Card Class10 8 GB SDHC Memory Card Class10 4 GB SDHC Memory Card Class6 2 GB SD Memory Card
RP-SDP16GU1K RP-SDP12GU1K RP-SDP08GU1K RP-SDP04GU1K RP-SDP02GU1K		Class4 16 GB SDHC Memory Card Class4 12 GB SDHC Memory Card Class4 8 GB SDHC Memory Card Class4 4 GB SDHC Memory Card Class4 2 GB SD Memory Card
RP-SDR08GU1A RP-SDR04GU1A RP-SDR02GU1A		Class2 8 GB SDHC Memory Card Class2 4 GB SDHC Memory Card Class2 2 GB SD Memory Card

Product numbers correct as of July 2009. These may be subject to change.

• NOTE: Accessories and/or model numbers may vary between countries. Consult your local dealer.

Digital Camera Accessory Order Form

Please photocopy this form when placing an order.

1. Digital Camera Model # _____

2. Items Ordered

Accessory #	Description	Price Each	Quantity	Total Price
Subtotal				
Your State & Local Sales Tax				
Shipping & Handling				6.95
Total Enclosed				

3. Method of payment (check one)

- Check of Money Order enclosed (NO C.O.D.SHIPMENTS)
- VISA Credit Card # _____
- MasterCard Expiration Date _____
- Discover Customer Signature _____

Make Check or Money Order to: PANASONIC ACCESSORIES

(Please do not send cash)

4. Shipping information (UPS delivery requires complete street address)

Ship To:

Mr.

Mrs.

Ms.

First

Last

Phone#:

Day () _____

Street Address

Night () _____

City

State

Zip

TO OBTAIN ANY OF OUR DIGITAL CAMERA ACCESSORIES YOU CAN DO ANY OF
THE FOLLOWING:

VISIT YOUR LOCAL PANASONIC DEALER

OR

CALL PANASONIC'S ACCESSORY ORDER LINE AT 1-800-332-5368

[6 AM-6 PM M-F, PACIFIC TIME]

OR

MAIL THIS ORDER TO: PANASONIC SERVICE AND TECHNOLOGY COMPANY

ACCESSORY ORDER OFFICE

20421 84th Avenue South Kent, WA. 98032

Request for Service Notice

Please make a copy of this page and note the problem you are having. Include it with your proof of purchase, and ship your camera to the address below.

Reason for requesting service:

(USA and Puerto Rico Only)

Mail this completed form and your Proof of Purchase along with your unit to:

Panasonic Services Company
Customer Servicer
Suite B
4900 George McVay Drive
McAllen, TX 78503

Limited Warranty

PANASONIC CONSUMER ELECTRONICS COMPANY, DIVISION OF PANASONIC CORPORATION OF NORTH AMERICA
One Panasonic Way, Secaucus, New Jersey 07094

Panasonic Digital Still Camera Limited Warranty

Limited Warranty Coverage

If your product does not work properly because of a defect in materials or workmanship, Panasonic Consumer Electronics Company (referred to as “the warrantor”) will, for the length of the period indicated on the chart below, which starts with the date of original purchase (“warranty period”), at its option either (a) repair your product with new or refurbished parts, or (b) replace it with a new or refurbished product. The decision to repair or replace will be made by the warrantor.

PRODUCT OR PART NAME	PARTS	LABOR
DIGITAL STILL CAMERA (EXCEPT ITEMS LISTED BELOW)	1 (ONE) YEAR	1 (ONE) YEAR
CCD	6 (SIX) MONTHS	90 (NINETY) DAYS
RECHARGEABLE BATTERY PACK (IN EXCHANGE FOR DEFECTIVE BATTERY PACK)	90 (NINETY) DAYS	NOT APPLICABLE
SD MEMORY CARD (IN EXCHANGE FOR DEFECTIVE SD CARD)	90 (NINETY) DAYS	NOT APPLICABLE

During the “Labor” warranty period there will be no charge for labor. During the “Parts” warranty period, there will be no charge for parts. You must carry-in or mail-in your product during the warranty period. If non-rechargeable batteries are included, they are not warranted. This warranty only applies to products purchased and serviced in the United States or Puerto Rico. This warranty is extended only to the original purchaser of a new product which was not sold “as is”. A purchase receipt or other proof of the original purchase date is required for warranty service.

Carry-In or Mail-In Service

For Carry-In or Mail-In Service in the United States and Puerto Rico call 1-800-211-PANA (7262).

This warranty ONLY COVERS failures due to defects in materials or workmanship, and DOES NOT COVER normal wear and tear or cosmetic damage. The warranty ALSO DOES NOT COVER damages which occurred in shipment, or failures which are caused by products not supplied by the warrantor, or failures which result from accidents, misuse, abuse, neglect, mishandling, misapplication, alteration, faulty installation, set-up adjustments, misadjustment of consumer controls, improper maintenance, power line surge, lightning damage, modification, or commercial use (such as in a hotel, office, restaurant, or other business), rental use of the product, service by anyone other than a Factory Service center or other Authorized Servicer, or damage that is attributable to acts of God.

THERE ARE NO EXPRESS WARRANTIES EXCEPT AS LISTED UNDER "LIMITED WARRANTY COVERAGE". THE WARRANTOR IS NOT LIABLE FOR INCIDENTAL OR CONSEQUENTIAL DAMAGES RESULTING FROM THE USE OF THIS PRODUCT, OR ARISING OUT OF ANY BREACH OF THIS WARRANTY. (As examples, this excludes damages for lost time, travel to and from the servicer, loss of media or images, data or other memory content. The items listed are not exclusive, but are for illustration only.) **ALL EXPRESS AND IMPLIED WARRANTIES, INCLUDING THE WARRANTY OF MERCHANTABILITY, ARE LIMITED TO THE PERIOD OF THE LIMITED WARRANTY.**

Some states do not allow the exclusion or limitation of incidental or consequential damages, or limitations on how long an implied warranty lasts, so the exclusions may not apply to you.

This warranty gives you specific legal rights and you may also have other rights which vary from state to state. If a problem with this product develops during or after the warranty period, you may contact your dealer or Service center. If the problem is not handled to your satisfaction, then write to the warrantor's Consumer Affairs Department at the addresses listed for the warrantor.

PARTS AND SERVICE WHICH ARE NOT COVERED BY THIS LIMITED WARRANTY ARE YOUR RESPONSIBILITY.

Customer Services Directory

Obtain Product Information and Operating Assistance; locate your nearest Dealer or Service Center; purchase Parts and Accessories; or make Customer Service and Literature requests by visiting our Web Site at:

<http://www.panasonic.com/help>

or, contact us via the web at:

<http://www.panasonic.com/contactinfo>

You may also contact us directly at:

1-800-211-PANA (7262),

Monday-Friday 9 am-9 pm; Saturday-Sunday 10 am-7 pm, EST

For hearing or speech impaired TTY users, TTY :1-877-833-8855

Accessory Purchases (United States and Puerto Rico)

Purchase Parts, Accessories and Instruction Books online for all Panasonic Products by visiting our Web Site at:

<http://www.pstc.panasonic.com>

or, send your request by E-mail to:

npcparts@us.panasonic.com

You may also contact us directly at:

1-800-332-5368 (Phone) 1-800-237-9080 (Fax Only)

(Monday - Friday 9 am to 9 pm, EST.)

PANASONIC SERVICE AND TECHNOLOGY COMPANY

20421 84th Avenue South, Kent, WA 98032

(We Accept Visa, MasterCard, Discover Card, American Express, and Personal Checks)

For hearing or speech impaired TTY users, TTY :1-866-605-1277

Product Repairs (United States and Puerto Rico)

Panasonic Services Company

Customer Servicenter

Suite B

MAIL TO : **4900 George McVay Drive**

McAllen, TX 78503

Important: When returning your product, please pack it securely with all the original accessories including the program CD. For processing purposes, please include your name, a United States mailing address (a Post Office Box will not be accepted), telephone number, and a complete description of the problem you are experiencing.

To receive a replacement product under the terms of the warranty, you must include a copy of your proof of purchase.

As of July 2009

- SDHC Logo is a trademark.
- QuickTime and the QuickTime logo are trademarks or registered trademarks of Apple Inc., used under license therefrom.
- Microsoft product screen shot(s) reprinted with permission from Microsoft Corporation.
- Other names, company names, and product names printed in these instructions are trademarks or registered trademarks of the companies concerned.



Panasonic Consumer Electronics Company,
Division of Panasonic Corporation of North America
One Panasonic Way, Secaucus, NJ 07094

© Panasonic Corporation 2009

Printed in China