

Basic Owner's Manual
Digital Camera

Model No. **DMC-LZ30**



Please read these instructions carefully before using this product, and save this manual for future use.

More detailed instructions on the operation of this camera are contained in "Owner's Manual for advanced features (PDF format)" in the supplied CD-ROM. Install it on your PC to read it.



For Canadian assistance, please call: 1-800-99-LUMIX (1-800-995-8649).

Panasonic Canada Inc.

5770 Ambler Drive
Mississauga, Ontario
L4W 2T3
(905) 624-5010
www.panasonic.ca

© Panasonic Corporation 2013

Printed in China



VQT4V85
M0113KZ0

Dear Customer,

Thank you for choosing Panasonic!

You have purchased one of the most sophisticated and reliable products on the market today. Used properly, we're sure it will bring you and your family years of enjoyment. Please take time to fill in the information below. The serial number is on the tag located on the underside of your camera. Be sure to retain this manual as your convenient camera information source.

Date of Purchase	Dealer Phone No.
Dealer Purchased From	Model No.
Dealer Address	Serial No.

Please note that the actual controls and components, menu items, etc. of your Digital Camera may look somewhat different from those shown in the illustrations in this Owner's Manual.

Carefully observe copyright laws.

Recording of pre-recorded tapes or discs or other published or broadcast material for purposes other than your own private use may infringe copyright laws. Even for the purpose of private use, recording of certain material may be restricted.

Information for Your Safety

WARNING:

- To reduce the risk of fire, electric shock or product damage,
- Do not expose this unit to rain, moisture, dripping or splashing.
- Use only the recommended accessories.
- Do not remove covers.
- Do not repair this unit by yourself. Refer servicing to qualified service personnel.

This Class B digital apparatus complies with Canadian ICES-003.

About the batteries

CAUTION

- Danger of explosion if battery is incorrectly replaced. Replace only with the type recommended by the manufacturer.
- When disposing of the batteries, please contact your local authorities or dealer and ask for the correct method of disposal.

- Do not heat or expose to flame.
- Do not leave the battery(ies) in a car exposed to direct sunlight for a long period of time with doors and windows closed.

Cautions for Use

- Do not use any other AV cables except the supplied one.
- Do not use any other USB connection cables except the supplied one.

Keep this unit as far away as possible from electromagnetic equipment (such as microwave ovens, TVs, video games etc.).

- If you use this unit on top of or near a TV, the pictures and/or sound on this unit may be disrupted by electromagnetic wave radiation.
- Do not use this unit near cell phones because doing so may result in noise adversely affecting the pictures and/or sound.
- Recorded data may be damaged, or pictures may be distorted, by strong magnetic fields created by speakers or large motors.
- Electromagnetic wave radiation generated by microprocessors may adversely affect this unit, disturbing the pictures and/or sound.
- If this unit is adversely affected by electromagnetic equipment and stops functioning properly, turn this unit off and remove the battery. Then reinsert the battery and turn this unit on.

Do not use this unit near radio transmitters or high-voltage lines.

- If you record near radio transmitters or high-voltage lines, the recorded pictures and/or sound may be adversely affected.

-If you see this symbol-



Information on Disposal in other Countries outside the European Union

This symbol is only valid in the European Union.

If you wish to discard this product, please contact your local authorities or dealer and ask for the correct method of disposal.

Panasonic Canada Inc.
5770 Ambler Drive, Mississauga, Ontario L4W 2T3
PANASONIC PRODUCT – LIMITED WARRANTY EXCHANGE PROGRAM

Panasonic Canada Inc. warrants this product to be free from defects in material and workmanship under normal use and for a period as stated below from the date of original purchase agrees to, at its option either (a) repair your product with new or refurbished parts, (b) replace it with a new or a refurbished equivalent value product, or (c) refund your purchase price. The decision to repair, replace or refund will be made by Panasonic Canada Inc.

LUMIX DMC-LZ30	One (1) year
-----------------------	---------------------

This warranty is given only to the original purchaser, or the person for whom it was purchased as a gift, of a Panasonic brand product mentioned above sold by an authorized Panasonic dealer in Canada and purchased and used in Canada, which product was not sold "as is", and which product was delivered to you in new condition in the original packaging.

IN ORDER TO BE ELIGIBLE TO RECEIVE WARRANTY SERVICE HEREUNDER, A PURCHASE RECEIPT OR OTHER PROOF OF DATE OF ORIGINAL PURCHASE, SHOWING AMOUNT PAID AND PLACE OF PURCHASE IS REQUIRED

LIMITATIONS AND EXCLUSIONS

This warranty ONLY COVERS failures due to defects in materials or workmanship, and DOES NOT COVER normal wear and tear or cosmetic damage. The warranty ALSO DOES NOT COVER damages which occurred in shipment, or failures which are caused by products not supplied by Panasonic Canada Inc., or failures which result from accidents, misuse, abuse, neglect, mishandling, misapplication, alteration, faulty installation, set-up adjustments, misadjustment of consumer controls, improper maintenance, improper batteries, power line surge, lightning damage, modification, introduction of sand, humidity or liquids, commercial use such as hotel, office, restaurant, or other business or rental use of the product, or service by anyone other than a Authorized Servicer, or damage that is attributable to acts of God. Dry cell batteries are also excluded from coverage under this warranty.

Rechargeable batteries are warranted for ninety (90) days from date of original purchase.

THIS EXPRESS, LIMITED WARRANTY IS IN LIEU OF ALL OTHER WARRANTIES, EXPRESS OR IMPLIED, INCLUDING ANY IMPLIED WARRANTIES OF MERCHANTABILITY AND FITNESS FOR A PARTICULAR PURPOSE. IN NO EVENT WILL PANASONIC CANADA INC. BE LIABLE FOR ANY SPECIAL, INDIRECT OR CONSEQUENTIAL DAMAGES RESULTING FROM THE USE OF THIS PRODUCT OR ARISING OUT OF ANY BREACH OF ANY EXPRESS OR IMPLIED WARRANTY. (As examples, this warranty excludes damages for lost time, travel to and from the Authorized Servicer, loss of or damage to media or images, data or other memory or recorded content. This list of items is not exhaustive, but for illustration only.)

In certain instances, some jurisdictions do not allow the exclusion or limitation of incidental or consequential damages, or the exclusion of implied warranties, so the above limitations and exclusions may not be applicable. This warranty gives you specific legal rights and you may have other rights which vary depending on your province or territory.

CONTACT INFORMATION

For product operation and information assistance, please contact:
Our Customer Care Centre: Telephone #: 1-800-99-LUMIX (1-800-995-8649)
Fax #: (905) 238-2360

For defective product exchange within the warranty period, please contact the original dealer or our Customer Care Centre.

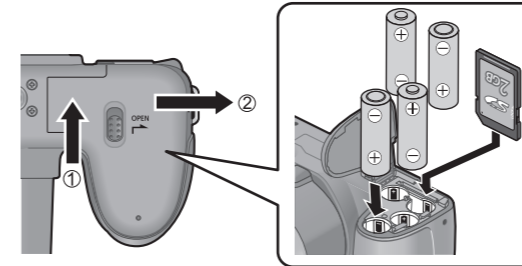
Standard accessories

Check that all the accessories are supplied before using the camera.

- Batteries**
• LR6/AA Alkaline batteries
- USB connection cable**
K1HY08YY0030
- AV cable**
K1HY08YY0029
- Shoulder strap**
VFC4903
- Lens Cap/ Lens Cap String**
VYQ8537
- CD-ROM***
VFF1174

Inserting the card (optional)/the batteries

1 Open the card/battery door



2 Insert the batteries or card

- Make sure that their orientation is correct.

Usable batteries

- LR6/AA Alkaline batteries
- HR6/AA Rechargeable Ni-MH (nickel metal hydride) batteries
- Do not use batteries other than those listed above.

Recording capacity guidelines

	Supplied batteries or optional Panasonic alkaline batteries	Fully-charged Panasonic Ni-MH batteries (optional, when the battery capacity is 1900 mAh)
Number of recordable pictures	Approx. 380 pictures	Approx. 540 pictures
Recording time	Approx. 190 min.	Approx. 270 min.
Playback time	Approx. 430 min.	Approx. 560 min.

Please note that the performance of alkaline batteries significantly decreases in low temperature conditions.

- Recording conditions by CIPA standard
- Keep the Memory Card out of reach of children to prevent swallowing.

Specifications Specifications are subject to change without notice.

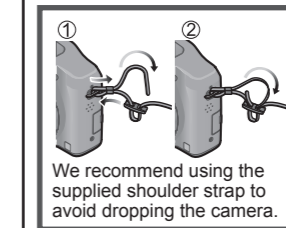
Power Source	DC 6 V LR6/AA Alkaline batteries (4) DC 4.8 V HR6/AA Rechargeable Ni-MH (nickel metal hydride) batteries (4)
Power Consumption	When recording: 1.5 W When playing back: 1.0 W
Camera effective pixels	16,100,000 pixels
Image sensor	1/2.3" CCD, total pixel number 16,400,000 pixels Primary color filter
Lens	Optical 35x zoom f=4.5 mm to 157.5 mm (35 mm film camera equivalent: 25 mm to 875 mm)/ F3.0 (Max. Wide) to F5.9 (Max. Tele)
Image Stabilizer	Optical method (Digital method is used when recording motion pictures.)
Focus range	P / M: 30 cm (0.98 feet) (Max. Wide) / 2 m (6.6 feet) (Max. Tele) to ∞ Macro / Intelligent Auto / Motion picture: 1 cm (0.033 feet) (Max. Wide) / 1.5 m (4.9 feet) (Max. Tele) to ∞
Shutter system	Electronic shutter + Mechanical shutter
Shutter speed	15 seconds to 1/2000th of a second
Exposure (AE)	Program AE (P) / Manual exposure (M) Exposure Compensation (1/3 EV Step, -3 EV to +3 EV)
Metering Mode	[Multi Metering] / [Center Weighted] / [Spot]

- If any accessories are lost, customers in Canada should contact 1-800-99-LUMIX (1-800-995-8649) for further information about obtaining replacement parts.

- The software compatible with your PC will be installed.
– PHOTOfunSTUDIO 9.0 LE (Windows XP/Vista/7/8)
– LoiLoScope 30 day full trial version (Windows XP/Vista/7/8)
(This will only install a shortcut to the trial version download site.)

Names and Functions of Main Parts

The clock is not set when the camera is shipped. Set the date and time before using the camera.



Taking pictures

1 Camera [ON/OFF] button
Use this to turn the camera on and off.

2 Shutter button (still pictures)
↓ to focus
↓ to record

3 Motion picture button (motion pictures)
↓ to start/end recording

4 Mode dial
Use this to select the recording mode.

5 Flash

6 Zoom lever

7 Microphone

8 Speaker
Do not cover the speaker with your fingers.

Viewing your pictures

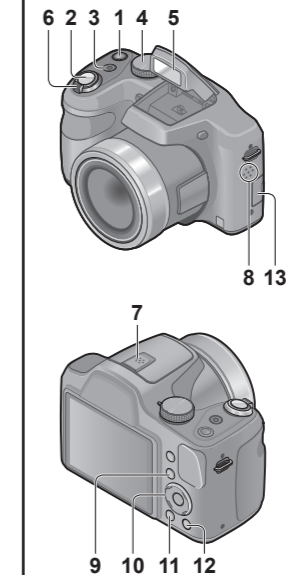
9 Playback button
① Press the Playback button
② Press ◀▶ to select the picture
• Press [] to delete the displayed picture.

10 Cursor button

11 [DISP.] button

12 [Q.MENU] / [] (Delete) / [] (Cancel) button

13 [AV OUT/DIGITAL] socket



LCD monitor	3.0" TFT LCD (4:3) (Approx. 460,800 dots) (field of view ratio about 100%)
Flash	Flash range: (ISO AUTO) Approx. 0.6 m (2.0 feet) to 10 m (33 feet) (Max. Wide)
Microphone/ Speaker	Monaural
Recording media	Built-in Memory (Approx. 100 MB) / SD Memory Card / SDHC Memory Card / SDXC Memory Card
Recording file format	JPEG (based on Design rule for Camera File system, based on Exif 2.3 standard) (still picture) QuickTime Motion JPEG (motion pictures with audio)
Interface	Digital USB 2.0 (High Speed) Analog video NTSC Composite Audio Audio line output (Monaural)
Terminal	AV OUT/DIGITAL: Dedicated jack (8 pin)
Dimensions	Approx. 123.8 mm (W) × 83.7 mm (H) × 91.4 mm (D) [4.87" (W) × 3.30" (H) × 3.60" (D)] (excluding the projection part)
Mass (Weight)	With card and batteries: Approx. 558 g (1.23 lb) Excluding card and batteries: Approx. 465 g (1.03 lb)
Operating temperature	0 °C to 40 °C (32 °F to 104 °F) (Operating humidity: 10%RH to 80%RH)