

Basic Owner's Manual Blu-ray Disc™ Player Model No. DMP-BDT270 DMP-BD903 DMP-BD93

Unless otherwise indicated, illustrations in these Owner's Manual are of DMP-BDT270.

Firmware updates

Panasonic is constantly improving the unit's firmware to ensure that our customers are enjoying the latest technology. Panasonic recommends updating your firmware as soon as you are notified.

If you have any questions, visit :
U.S.A. : www.panasonic.com/support
Canada : www.panasonic.ca/english/support

Register online at www.panasonic.com/register
(U.S. customers only)

SQT0698-3
F1214JY3095

P PC

Thank you for purchasing this product. Please read these instructions carefully before using this product, and save this manual for future use.

A more detailed owner's manual is available in "Owner's Manual (PDF format)". To read it, download it from the website. <http://av.jpn.support.panasonic.com/support/global/cs/bd/oi/index.html>



You will need Adobe Reader to browse or print the Owner's Manual (PDF format). You can download and install a version of Adobe Reader that you can use with your OS from the following website. (As of December 2014) <http://www.adobe.com/products/acrobat/readstep2.html>

Accessories

Check the supplied accessories before using this unit.

1 Remote control

BDT270 (N2QAYB001023)

BD903/93 (N2QAYB001024)

2 Batteries for remote control

1 BDT270 AC power supply cord (K2CB2Y00092)

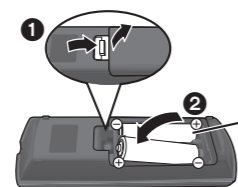
1 BD903/93 AC adaptor (SAE0001)

For Canada

The enclosed Canadian French label sheet corresponds to the English display on the unit.

- Product numbers are provided in these Owner's Manual correct as of December 2014. These may be subject to change.
- Do not use AC power supply cord and AC adaptor with other equipment.
- Do not use any other AC power supply cords and AC adaptors except the supplied one.

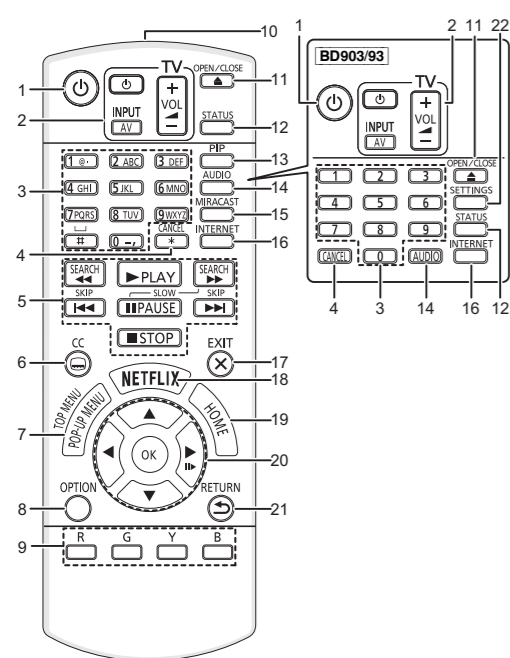
Using the remote control



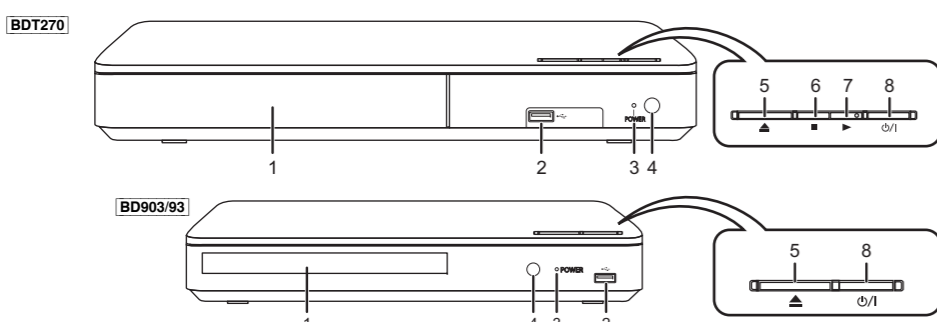
R6/LR6, AA
(Alkaline or manganese batteries)

– Insert the batteries to the terminal so that it (+ and –) matches those in the remote control.

Control reference guide



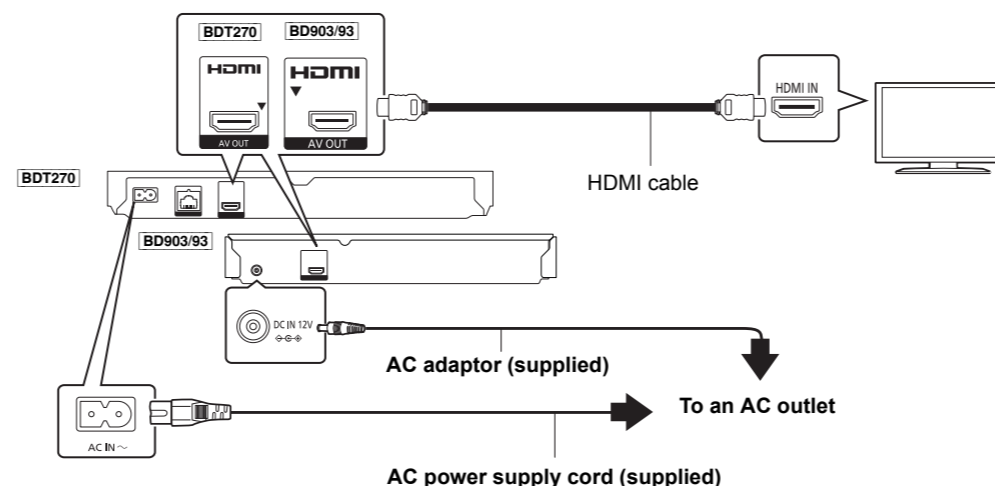
- Turn the unit on and off
- TV operation buttons
You can operate the Panasonic TV using this unit's remote control. Some buttons may not work depending on the TV.
[TV] : Turn the TV on and off
[AV] : Change input
[+ – VOL] : Adjust the volume
- Select title numbers, etc./Enter numbers or BDT270 characters
- Cancel
- Basic playback control buttons
- Show Closed Caption setup screen
- Show Pop-up menu/Top menu
- Show Option menu
- Colored buttons (red, green, yellow, blue)
Used for various purposes depending on the display.
- Transmit the remote control signal
- Open or close the disc tray
- Show the status messages
- BDT270 Switch Secondary Video on/off (Picture-in-picture)
- Change soundtrack
- BDT270 Show Miracast™ screen
- Show the Home Screen of Network Service
- Exit the Menu screen
- Show Netflix screen
- Show HOME menu
- [▲, ▼, ◀, ▶] : Move the highlight for selection
[OK] : Confirm the selection
[II] : Frame-by-frame
- Return to previous screen
- BD903/93 Show Setup menu



- Disc tray
- USB port
- POWER LED
The LED lights when the unit is turned on, and flashes when error occurs.
- Remote control signal sensor
Distance: Within approx. 7 m (23 feet)
Angle: Approx. 20° up and down, 30° left and right
- Open or close the disc tray
- BDT270 Stop
- BDT270 Start play
- Standby/on switch (⏻/⏻)
Press to switch the unit from on to standby mode or vice versa. In standby mode, the unit still consumes a small amount of power.

Quick Start Guide

STEP 1 : Connecting to a TV



This unit consumes a small amount of AC power (⇒ "Specifications") even when turned off in standby mode. For the purpose of energy conservation, the unit should be disconnected if you will not be using it for extended period of time.

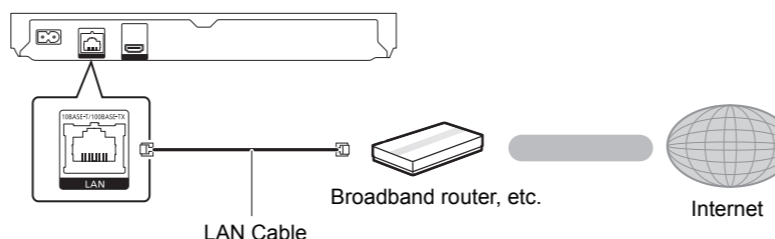
STEP 2 : Connecting to the network

■ Wireless LAN connection



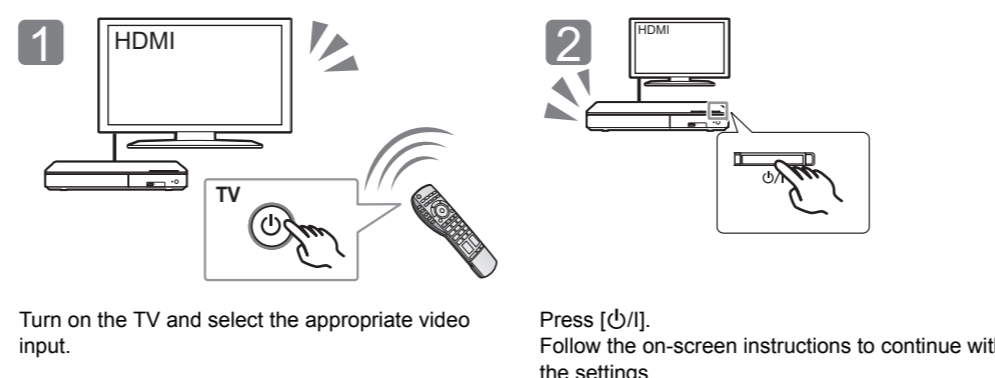
BDT270

■ LAN cable connection

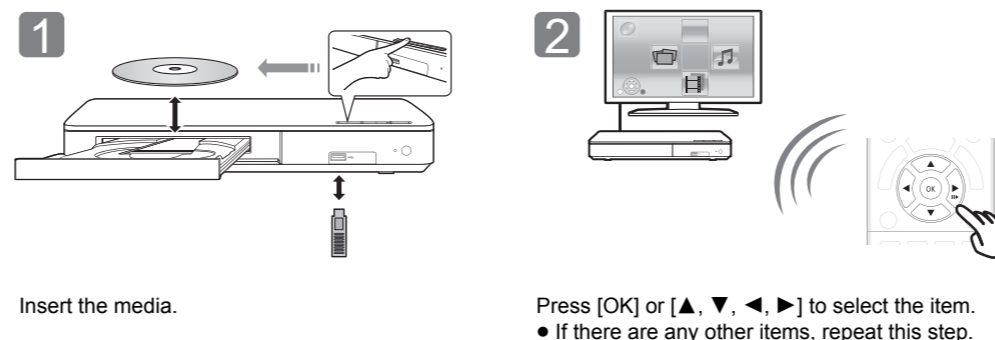


Use category 5 or above straight LAN cables (STP) when connecting to peripheral devices.

STEP 3 : Settings



STEP 4 : Playback



Operating during playback

The following functions may not work depending on the media and contents.

Function	Operation	Notes
Stop	Press [■STOP].	The stopping point is memorized. Resume play function Press [▶PLAY] to restart from this point. • The point is cleared if the media is removed.
Pause	Press [⏸PAUSE].	Press [⏸PAUSE] again or [▶PLAY] to restart play.
Search	While playing, press [SEARCH◀◀] or [SEARCH▶▶].	The speed increases up to 5 steps. • Press [▶PLAY] to revert to normal playback speed.
Slow-motion	While paused, press [SEARCH▶▶].	
Skip	While playing or paused, press [◀◀] or [▶▶].	Skip to the title, chapter or track.

Playable media

BD-Video	: Video
BD-RE	: Video, JPEG, MPO*1, AAC, ALAC, DSD*1, FLAC, MP3, WAV, WMA
BD-R	: Video, MKV, Xvid*2, AAC, ALAC, DSD*1, FLAC, MP3, WAV, WMA
DVD-Video	: Video
DVD-R/DVD-R DL	: Video, AVCHD, MKV, Xvid*2, JPEG, MPO*1, AAC, ALAC, DSD*1, FLAC, MP3, WAV, WMA
DVD-RW/+R/+RW/+R DL	: Video, AVCHD
Music CD	: Music [CD-DA]
CD-R/CD-RW	: MKV, Xvid*2, JPEG, MPO*1, AAC, ALAC, FLAC, MP3, Music [CD-DA], WAV, WMA
USB devices (up to 4 TB)	: MKV, MP4, MPEG2, Xvid*2, JPEG, MPO*1, AAC, ALAC, DSD*1, FLAC, MP3, WAV, WMA

Region management information

The unit can play back BD-Video/DVD-Video discs of the following regions codes, including "ALL":

Example: BD-Video DVD-Video



- The unit cannot playback discs in PAL format.

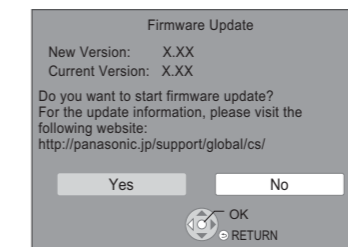
*1 BDT270 only

*2 Canada only

Firmware updates

Occasionally, Panasonic may release updated firmware for this unit that may add or improve the way a feature operates. These updates are available free of charge.

This unit is capable of checking the firmware automatically when connected to the Internet via a broadband connection. When a new firmware version is available, the following message is displayed.

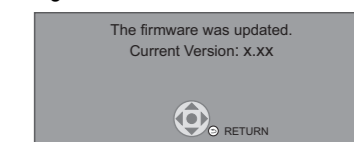


You can also download the latest firmware from the following website and store it to a USB device to update the firmware. <http://panasonic.jp/support/global/cs/> (This site is in English only.)

DO NOT DISCONNECT the unit from the AC power or perform any operation while the update takes place.

After the firmware is installed, unit will restart and the following screen will be displayed.

e.g.,



- To show the firmware version on this unit; BDT270 [HOME] ⇒ "Setup" ⇒ "Player Settings" ⇒ "System" ⇒ "System Information" ⇒ "Firmware Version Information" BD903/93 [SETTINGS] ⇒ "System" ⇒ "System Information" ⇒ "Firmware Version Information"
- Downloading will require several minutes. It may take longer or may not work properly depending on the connection environment.
- If you do not want to check for the latest firmware version, set "Automatic Update Check" to "Off". BDT270 [HOME] ⇒ "Setup" ⇒ "Player Settings" ⇒ "System" ⇒ "Firmware Update" BD903/93 [SETTINGS] ⇒ "System" ⇒ "Firmware Update"

Specifications

Power supply	BDT270 AC 120 V, 60 Hz BD903/93 DC 12 V, 0.8 A (DC IN terminal)	Dimensions (W×H×D)	BDT270 312 mm×43 mm×180 mm (Approx. 12 5/16"×1 11/16"×7 2/16") BD903/93 245 mm×38.5 mm×175 mm (Approx. 9 10/16"×1 8/16"×6 14/16")
Power consumption	BDT270 Approx. 13 W BD903/93 Approx. 11 W	Mass (Weight)	BDT270 Approx. 1.0 kg (2.2 lbs) BD903/93 Approx. 0.8 kg (1.7 lbs)
Power consumption in standby mode	Approx. 0.5 W		
Power consumption in quick start standby mode	BDT270 Approx. 5 W BD903/93 Approx. 3.5 W		

• Specifications are subject to change without notice.

