

## Wi-Fi Connection Guide

High Definition Video Camera

Model No. **HC-X920/HC-X920M**  
**HC-V720/HC-V720M**  
**HC-V520/HC-V520M**

VQC9464

This unit cannot be used to connect to a public wireless LAN connection.

**Step.1** Install the "Image App" on your smartphone/tablet

**Step.2** Confirm the Wi-Fi® connection method

**Step.3** Connect to Wi-Fi

To use the Wi-Fi® function, it is required to connect this unit to a wireless access point or smartphone via Wi-Fi.

- This guide explains the [Link to Cell] function with the use of a Wi-Fi connection.

- A** [Link to Cell]
- B** [DLNA Play]
- C** [Live Cast]
- D** [Wi-Fi Setup]
- E** [Home Cam]

- Please refer to the owner's manual (PDF format) of this unit for details about the setup/operation of this unit.
- Please refer to the operating instructions of the device in use for details about the setup/operation of the wireless access point or smartphone.

## Step.1 Install the "Image App" on your smartphone/tablet

An environment that can connect to the network is required.

It is required to install the "Image App" on your smartphone/tablet to connect this unit.

- [Android™]:** Select "Google Play™ Store".  
**[iOS]:** Select "App Store<sup>SM</sup>".
- Enter "Image App" into the search box.
- Select "Image App" and install it.

## Step.2 Confirm the Wi-Fi® connection method

Confirm the wireless access point and smartphone used.

**When connecting to a wireless access point (wireless LAN router)**



**When connecting to a smartphone**



Proceed to **C** [Direct Connection] of Step.3

**1** Check if the wireless access point is compatible with IEEE802.11b/g/n.

• Proceed to step 2 once the compatibility is confirmed.

**2** Check if the wireless access point is compatible with WPS\*.

Compatible with WPS:

Proceed to **A** [Easy Connection (WPS)] of Step.3

Not compatible with WPS:

Proceed to **B** [Manual Connection] of Step.3

\* WPS is an abbreviation for Wi-Fi Protected Setup™.

- Android and Google Play are trademarks or registered trademarks of Google Inc.
- App Store is a service mark of Apple Inc.
- "Wi-Fi", "Wi-Fi Protected Setup", "WPA" and "WPA2" are marks or registered marks of the Wi-Fi Alliance.
- QR Code is a registered trademark of DENSO WAVE INCORPORATED.

## Step.3 Connect to Wi-Fi

The setting screen for the wireless access point is displayed when the Wi-Fi button is pressed for the first time.

**When connecting to a wireless access point (wireless LAN router)**

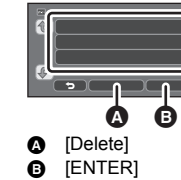
**A** [Easy Connection (WPS)]

**1** Press the Wi-Fi button on this unit to setup the Wi-Fi.

[Wi-Fi Setup] → [Wireless Settings]

**2** Touch a Blank row to register a new wireless network.

**3** Touch [Easy Connection (WPS)].



**4** Press the WPS button on the wireless access point.

• When the connection is complete, a message is displayed on this unit.

**5** Touch [Link to Cell] and start up the smartphone application "Image App".

• When the connection is complete, images from this unit are displayed on the smartphone screen.

**B** [Manual Connection]

• Please refer to the operating instruction of the device in use for details about the setting and display of the wireless access point.

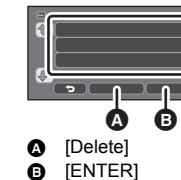
**1** Press the Wi-Fi button on this unit to setup the Wi-Fi.

[Wi-Fi Setup] → [Wireless Settings]

**2** Touch a Blank row to register a new wireless network.

**3** Touch [Manual Connection].

**4** Touch [Search for wireless network].



• For more details about [Manual Setting], please refer to the owner's manual (PDF format) of this unit.

**5** Touch the wireless access point to connect.

**6** Touch [ENTER].

• If an Encryption key (Password) is not set on your router, the connection is complete and a message is displayed.

**7** (When there is an Encryption key (Password))  
Touch [INPUT], then enter the Encryption key (Password) of the wireless access point.

• For details on how to enter characters, refer to the owner's manual (PDF format).

• When the entry is complete, touch [Enter].

**8** (When there is an Encryption key (Password))  
Touch [NEXT].

• A message is displayed when the connection is complete.

**9** Touch [Link to Cell] and start up the smartphone application "Image App".

• When the connection is complete, images from this unit are displayed on the smartphone screen.

**When connecting to a smartphone**

**C** [Direct Connection]

**1** Press the Wi-Fi button on this unit to setup the Wi-Fi.

[Wi-Fi Setup] → [Direct Connection]

**2** Touch [Change connection type].

**3** Touch [QR code].

• The QR code is displayed on this unit screen.

**4** Start up the smartphone application "Image App".

**5** Scan QR code displayed on this unit with the smartphone.

• When using an iOS device, the profile install screen will be displayed on the smartphone. After installing, close the displayed screen by pressing the Home button and start up "Image App" again.

• When the connection is complete, images from this unit are displayed on the smartphone screen.

### Connect with using NFC

HC-V720/HC-V720M/HC-V520/HC-V520M

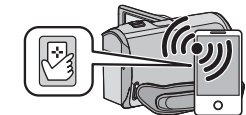
This function can be used with the NFC compatible device with Android (OS version 2.3.3 or later). (Except for some models)

NFC is an abbreviation for Near Field Communication.

• When this unit and the smartphone are connected to the same wireless access point, the result is a wireless access point connection. All others are direct connections.

**1** Start up the smartphone application "Image App".

**2** Touch the smartphone on of this unit when a message to touch the NFC mark of the device is displayed on the smartphone screen.



• Proceed with the connection by following the smartphone screen instructions.

• When the connection is complete, images from this unit are displayed on the smartphone screen.

• The NFC function cannot be used on the smartphone when a message to touch the NFC mark of the device is not displayed. Try other connection methods.