

Panasonic®

Installation Guide

Home Network System
Indoor Camera

Model No. **KX-HNC210**



Thank you for purchasing a Panasonic product.

This document explains how to install the indoor camera properly.
For details about how to use the system, refer to the User's Guide (page 13).

Please read this document before using the unit and save it for future reference.
For assistance, please contact us at 1-800-272-7033 or visit our Web site:
<http://shop.panasonic.com/support> for customers in the U.S.A.

Please register your product: <http://shop.panasonic.com/support>

Printed in China

Table of Contents

Introduction

Accessory information3

Important Information

About this system4

For your safety4

Important safety instructions5

For best performance5

Other information6

Setup

Part names and functions7

LED indicator7

Setup overview7

Registering the camera7

Information about sensor features8

Information about night vision mode9

Confirming the usage area9

Connections10

Wall mounting11

Appendix

Testing the motion detection range12

Features available when using the [Home

Network] app12

Accessing the User's Guide13

Specifications13

FCC and other information14

Customer services15

Limited Warranty (ONLY FOR U.S.A.)16

Accessory information

Supplied accessories

No.	Accessory item/Part number	Quantity
①	AC adaptor/PNLV236-0Y	1

①



Additional accessories

Please contact your nearest Panasonic dealer for sales information.

Accessory item	Order number
DC extension cord	PNJA1159Z



Other information

- Design and specifications are subject to change without notice.
- The illustrations in these instructions may vary slightly from the actual product.

Trademarks

- microSDHC is a trademark of SD-3C, LLC.
- iPhone and iPad are registered trademarks of Apple Inc.
- Android is a trademark of Google Inc.
- Microsoft, Windows, and Internet Explorer are either registered trademarks or trademarks of Microsoft Corporation in the United States and/or other countries.
- All other trademarks identified herein are the property of their respective owners.

Notice

- The hub supports microSD and microSDHC memory cards. In this document, the term "microSD card" is used as a generic term for any of the supported cards.

Important Information

About this system

- This system is an auxiliary system; it is not designed to provide complete protection from property loss. Panasonic will not be held responsible in the event that property loss occurs while this system is in operation.
- This product should not be used as substitute for a medical or caregiver's supervision. It is the caregiver's responsibility to stay close enough to handle any eventuality.
- The system's wireless features are subject to interference, therefore functionality in all situations cannot be guaranteed. Panasonic will not be held responsible for injury or damage to property that occurs in the event of wireless communication error or failure.

For your safety

To prevent severe injury and loss of life/property, read this section carefully before using the product to ensure proper and safe operation of your product.

WARNING

Power connection

- Use only the power source marked on the product.
- Do not overload power outlets and extension cords. This can result in the risk of fire or electric shock.
- Completely insert the AC adaptor/power plug into the power outlet. Failure to do so may cause electric shock and/or excessive heat resulting in a fire.
- Regularly remove any dust, etc. from the AC adaptor/power plug by pulling it from the power outlet, then wiping with a dry cloth. Accumulated dust may cause an insulation defect from moisture, etc. resulting in a fire.
- Unplug the product from power outlets if it emits smoke, an abnormal smell, or makes an unusual noise. These conditions can

cause fire or electric shock. Confirm that smoke has stopped emitting and contact us at <http://shop.panasonic.com/support>

- Unplug from power outlets and never touch the inside of the product if its casing has been broken open. Danger of electric shock exists.
- Never touch the plug with wet hands. Danger of electric shock exists.
- Do not connect non-specified devices.

Installation

- To prevent the risk of fire or electrical shock, do not expose the product to rain or any type of moisture.
- Do not place or use this product near automatically controlled devices such as automatic doors and fire alarms. Radio waves emitted from this product may cause such devices to malfunction resulting in an accident.
- Do not allow the AC adaptor to be excessively pulled, bent or placed under heavy objects.
- Keep small parts, such as microSD cards and screws, out of the reach of children. There is a risk of swallowing. In the event they are swallowed, seek medical advice immediately.

Operating safeguards

- Unplug the product from power outlets before cleaning. Do not use liquid or aerosol cleaners.
- Do not disassemble the product.
- Never put metal objects inside the product. If metal objects enter the product, turn off the circuit breaker and contact an authorized service center.

Medical

- Consult the manufacturer of any personal medical devices, such as pacemakers or hearing aids, to determine if they are adequately shielded from external RF (radio frequency) energy. DECT features operate between 1.92 GHz and 1.93 GHz with a peak transmission power of 115 mW.
- Do not use the product in health care facilities if any regulations posted in the

Important Information

area instruct you not to do so. Hospitals or health care facilities may be using equipment that could be sensitive to external RF energy.

CAUTION

Installation and location

- Never install wiring during a lightning storm.
- The AC adaptor is used as the main disconnect device. Ensure that the AC outlet is installed near the product and is easily accessible.
- To avoid the risk of strangulation, keep the product and the AC adaptor cord at least 1 m (3 feet) from a child's crib and out of the reach of small children.
- Mount the product on the stable location where the camera can be adequately supported when installing.
- Do not mount the product on soft material. It may fall down, break or cause injury.
- Do not mount the product on the following materials: gypsum board, ALC (autoclaved lightweight cellular concrete), concrete block, plywood less than 25 mm (1 inch) thick, and etc.

Preventing accidents and injuries

- Do not put your ear(s) near the speaker, as loud sounds emitted from the speaker may cause hearing impairment.

Important safety instructions

When using your product, basic safety precautions should always be followed to reduce the risk of fire, electric shock, and injury to persons, including the following:

1. Do not use this product near water for example, near a bathtub, washbowl, kitchen sink, or laundry tub, in a wet basement or near a swimming pool.
2. Use only the power cord indicated in this document.

SAVE THESE INSTRUCTIONS

For best performance

Hub location/avoiding noise

The hub and other compatible Panasonic devices use radio waves to communicate with each other.

- For maximum coverage and noise-free communications, place your hub:
 - at a convenient, high, and central location with no obstructions between the product and hub in an indoor environment.
 - away from electronic appliances such as TVs, radios, personal computers, wireless devices, or other phones.
 - facing away from radio frequency transmitters, such as external antennas of mobile phone cell stations. (Avoid putting the hub on a bay window or near a window.)
- If the reception for a hub location is not satisfactory, move the hub to another location for better reception.

Environment

- Keep the product away from electrical noise generating devices, such as fluorescent lamps and motors.
- The product should be kept free from excessive smoke, dust, high temperature, and vibration.
- Do not expose this product to direct sunlight or other forms of powerful light such as halogen lights for long periods of time. (This may damage the image sensor.)
- Do not place heavy objects on top of the product.
- When you leave the product unused for a long period of time, unplug the product from the power outlet.
- The product should be kept away from heat sources such as heaters, kitchen stoves, etc. It should not be placed in rooms where the temperature is less than 0 °C (32 °F) or greater than 40 °C (104 °F). Damp basements should also be avoided.
- Operating the product near electrical appliances may cause interference. Move away from the electrical appliances.

For assistance, please visit <http://shop.panasonic.com/support>

5

Important Information

Other information

Routine care

- Wipe the outer surface of the product with a soft moist cloth.
- Do not use benzene, thinner, or any abrasive powder.

Camera image quality

- Camera images may have the following characteristics.
 - Colors in images may differ from the actual colors.
 - When there is light behind the subject (i.e., backlighting), faces may appear dark.
 - Image quality may be reduced in dark locations.
 - Images may appear hazy when there are outdoor lights in use.

When the subject is lit by sunlight or halogen lights, black areas of the image may appear purplish. This is not a malfunction.

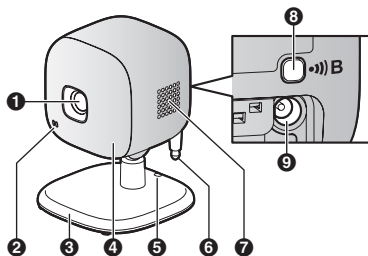
Protecting your recordings

- Do not remove the microSD card or disconnect the hub's AC adaptor while reading or writing data to the microSD card. Data on the card could become corrupted.
- If a microSD card malfunctions or is exposed to electromagnetic waves or static electricity, data on the card could become corrupted or erased. Therefore we recommend backing up important data to a computer or other device.

Notice:

- This product is designed for use in the United States of America. Sale or use of this product in other countries may violate local laws.
- Cet appareil est conçu pour être utilisé aux États-Unis d'Amérique. La vente ou l'emploi de cet appareil dans certains autres pays peut constituer une infraction à la législation locale.
- Este producto está diseñado para usarse en los Estados Unidos de América. La venta o el empleo de este producto en ciertos países puede constituir violación de la legislación local.
- 本產品專為美國使用而設。若在其他國家銷售或使用，可能會違反當地法例。
- この製品は、日本国外での使用を目的として設計されており、日本国内での使用は法律違反となります。従って、当社では日本国内においては原則として修理などのサービスは致しかねます。

Part names and functions



- 1** Lens unit
- 2** Microphone
- 3** Stand
- 4** LED indicator
- 5** Hole
You can prevent the camera from falling by passing a string through the hole in the stand.
- 6** Temperature sensor
- 7** Speaker
- 8** [Speaker icon]
- 9** DC jack

LED indicator

You can use the LED indicator to confirm the camera's status.

Indicator	Status
Off	No power, or LED indicator is turned off*1
Green, lit	Normal operation*1
Green, blinking slowly	Registration mode
Red	Motion detected
Red, blinking slowly	Live images are being viewed or recorded

Indicator	Status
Red, blinking	Camera is out of range of the hub, or device malfunction
Amber, blinking slowly	Camera is not registered to a hub

*1 You can configure the camera so that its LED indicator does not light during normal operation. For more information, refer to the User's Guide (page 13).

Setup overview

- 1 Initial setup**
Make sure you can access the system using your mobile device. For details, refer to the System Setup Guide included with your hub.
- 2 Registration**
Required only if the camera was purchased separately (i.e., not as part of a bundle).
- 3 Confirm the usage area**
Read the information in this document to confirm that the desired usage area is suitable to proper operation.
- 4 Connection**
Place the camera in the desired location and connect it to the power outlet.

Registering the camera

This procedure is not required for devices that were included as part of a bundle.

Before you can use the camera, it must be registered to the hub.
If the camera is not registered to a hub, the camera's LED indicator blinks slowly in amber. You can register each device by using the registration buttons or the **[Home Network]** app.

Setup

Note:

- Before registering the camera, make sure the AC adaptors of the hub and camera are connected and each device is powered.

Using registration buttons

- 1 Hub:**
Press and hold **[•/•]B CAMERA** until the LED indicator blinks slowly in green.
- 2 Camera:**
Press and hold **[•/•]B** until the LED indicator blinks slowly in green (page 7).
 - When registration is complete, the hub sounds one long beep.

Note:

- To cancel without registering the camera, press **[•/•]B** on the hub and on the camera again.
- If registration fails, the hub sounds several short beeps.

Using the app

When you register the camera by using the **[Home Network]** app, you can assign a name to your devices and group them by location. For more information, refer to the User's Guide (page 13).

Information about sensor features

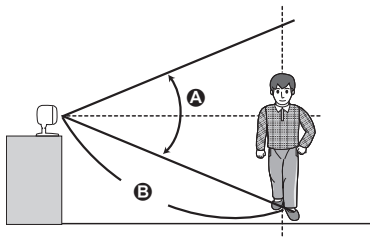
The camera has 3 sensor features: a visual sensor used for motion detection, a temperature sensor, and a sound sensor. Please read the following information about each sensor before deciding where to install the camera.

Note:

- The camera's sensor features are not designed to be used in situations that require high reliability. We do not recommend use of the sensor features in these situations.
- Panasonic takes no responsibility for any injury or damage caused by the use of the camera's sensor features.

Using visible light to detect motion

The camera can detect motion by recognizing changes in the brightness of areas that are visible to the camera.



A Vertical detection range: approx. 50°

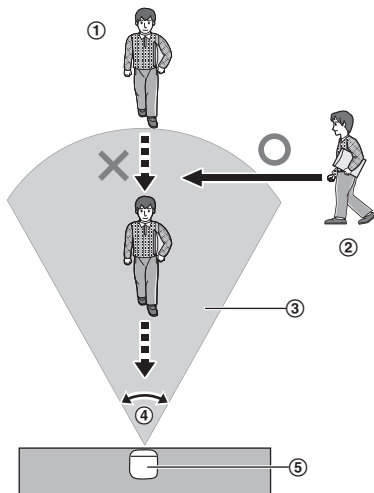
B Distance of detectable motion: up to 5 m (16.4 feet) when motion sensitivity is set to the highest setting using the **[Home Network]** app.

Note:

- Movement may be incorrectly detected when the moving object and the background have similar colors.
- Movement may be incorrectly detected when there are sudden changes to the overall brightness level, such as when lights are turned on.
- Detection becomes difficult when the image is dark.
- You can adjust the sensitivity of the camera's motion detection feature, and select which areas of the camera image are monitored for motion detection. For more information, refer to the User's Guide (page 13).

Direction of motion

It is easier to detect objects that move sideways in front of the camera, and more difficult to detect objects that move directly toward the front of the camera.



- ① It is difficult to detect movement directly towards the front of the camera.
- ② It is easy to detect movement sideways in front of the camera.
- ③ Detection range
- ④ Horizontal detection range: approx. 70°
- ⑤ Camera

Temperature sensor

The sensor is triggered when the set temperature range is exceeded.

Note:

- The temperature sensor may not detect temperature accurately if the camera is exposed to warm or cool breezes from heating/cooling systems.
- You can adjust the temperature setting of the temperature sensor. For more information, refer to the User's Guide (page 13).

Sound sensor

The sensor is triggered when the set sound level is exceeded.

Note:

- The sound sensor does not function while the camera's lullaby feature is playing a lullaby.
- The sound sensor may not function as desired when the camera is placed in noisy environments.
- You can adjust the sound level setting of the sound sensor. For more information, refer to the User's Guide (page 13).

Information about night vision mode

The camera features an array of infrared LEDs that light automatically in low-light conditions, allowing camera images to be viewable even when the surrounding area is dark.

Note:

- When night vision mode is active, the colors in camera images may appear different from normal.
- When night vision mode is active, the array of infrared LEDs that surround the camera's lens light up in a faint red color that can be seen in the dark.
- If the camera is installed in front of a window and points directly at the window, images may be poor when night vision mode is active.

Confirming the usage area

Wireless communication range

The wireless communication range of each device in the system from the hub is approximately 50 m (160 feet) indoors and approximately 300 m (1,000 feet) outdoors. Wireless communication may be unreliable when the following obstacles are located between the hub and other devices.

Setup

- Metal doors or screens
- Walls containing aluminum-sheet insulation
- Walls made of concrete or corrugated iron
- Double-pane glass windows
- Multiple walls
- When using each device on separate floors or in different buildings

Note:

- The camera's LED indicator blinks in red if it is out of range of the hub. In this case, confirm all connections, including those of the hub.

Usage area cautions

Using the camera in the following areas may cause deformation, malfunction, or operational failure.

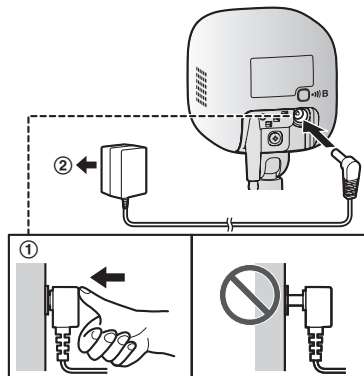
- In direct sunlight
- Areas exposed to grease or steam, such as kitchens
- Near fire or heating devices
- Near magnetic fields (such as near microwaves and magnets)
- Areas subject to extreme temperature changes, such as next to air conditioners
- Areas with reflective objects, such as glass, that can interfere with detection of temperature variation
- Areas where the temperature is affected by strong illuminating objects (such as fluorescent lights)
- Near devices that emit strong radio waves, such as mobile phones

Connections

- ① Insert the AC adaptor plug firmly into the DC jack.
- ② Connect the AC adaptor to the power outlet.

Note:

- Use only the supplied Panasonic AC adaptor PNLV236.



Note about power connections

AC adaptor connection

- The AC adaptor must remain connected at all times. (It is normal for the adaptor to feel warm during use.)
- The AC adaptor should be connected to a vertically oriented or floor-mounted AC outlet. Do not connect the AC adaptor to a ceiling-mounted AC outlet, as the weight of the adaptor may cause it to become disconnected.

Power failure

- The camera will not work during a power failure.

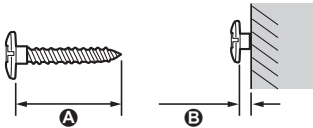
Placing the camera on a flat area

When you place the camera on a flat area, you can prevent the camera from falling by passing a string through the hole (page 7) in the stand.

- 1 Pass a string (not supplied) through the hole in the stand.
- 2 Tie the string and hook it to the bracket.

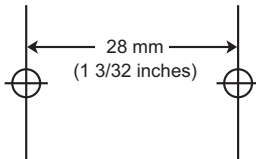
Wall mounting

- Mount the camera on the stable location where the unit can be adequately supported when installing.
 - The AC adaptor should be connected to a vertically oriented or floor-mounted AC outlet. Do not connect the AC adaptor to a ceiling-mounted AC outlet, as the weight of the adaptor may cause it to become disconnected.
 - Do not mount the camera on a soft material. It may fall down, break or cause injury.
 - Do not mount the camera on the following places: plaster board, ALC (autoclaved lightweight cellular concrete), concrete block, plywood less than 25 mm (1 inch) thick, and etc.
- 1 Drive the screws (not supplied) into the wall.
 - A** Longer than 20 mm (25/32 inches)
 - B** Space 1.3 mm (1/32 inches)

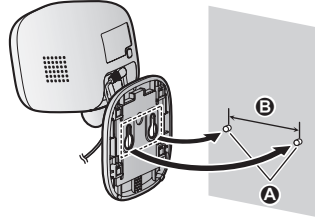


Note:

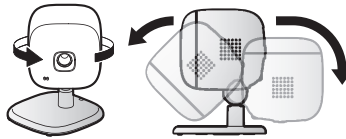
- Use the following template when determining the location of the screw holes.



- 2 Mount the camera to the wall.
 - A** Screws
 - B** 28 mm (1 3/32 inches)



- 3 Adjust the angle of the camera.
 - A** Screws
 - B** 28 mm (1 3/32 inches)



Appendix

Testing the motion detection range

After you have installed the **[Home Network]** app on your mobile device, you can use your mobile device to test the performance of the camera's motion detection feature. For more information, refer to the User's Guide (page 13).

- 1 Start the **[Home Network]** app and display live images from the camera.
- 2 Move to an area within the camera's viewable area.
- 3 While moving near the camera, use your mobile device to observe where you are in the viewable area when the camera's motion detection feature is triggered.
 - When the motion detection feature is triggered, the camera's LED indicator lights in red for about 3 seconds.
- 4 Note the areas of the viewable area where movement is detected, and make adjustments as necessary.

Note:

- You can adjust the area detectable by the visual sensor. For more information, refer to the User's Guide (page 13).

Testing the microphone

To test the microphone, speak loudly and clearly into the microphone while a mobile device user is viewing live images from the camera.

Features available when using the **[Home Network]** app

Some of the features that are available when using the **[Home Network]** app are listed below. For more information, refer to the User's Guide (page 13).

- **Alarm system**
You can use the app to arm and disarm the alarm system, confirm the current status of the sensor, and view a log of previous events.
- **Live camera monitoring**
You can view live images from the camera, even while away from home.
- **Listen and talk**
You can use your mobile device to talk and listen to anyone within range of the camera's microphone and speaker.
- **Sensor adjustment**
You can adjust the detection range of the visual sensor and the setting levels of the sound sensor and temperature sensor.
- **Sensor integration**
You can configure the camera's sensor features to trigger other system events, such as camera recording*1, turning on an electric device (such as a lamp), etc. (Appropriate device required.)
*1 A commercially-available microSD card must be inserted into the hub in order to record images.
- **Notification**
You can configure the camera to send a notification to the **[Home Network]** app when the camera's sensor features are triggered, for example, when motion is detected, if a baby is crying (sound sensor) or if the room becomes too warm or too cold (temperature sensor).

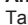
Accessing the User's Guide

The User's Guide is a collection of online documentation that helps you get the most out of the [Home Network] app.

1 iPhone®/iPad®

Tap  in the app's home screen.

Android™ devices

Tap  or press your mobile device's menu button in the app's home screen.

2 Tap [User's Guide].

Note:

- Microsoft® Windows® Internet Explorer® 8 and earlier versions are not supported.
- Android 4.1 or later versions are recommended.
- You can also access the User's Guide at the web page listed below.



www.panasonic.net/pcc/support/tel/homenetwork/manual/

Specifications

- **Standards**
DECT (Digital Enhanced Cordless Telecommunications)
 - **Frequency range**
DECT: 1.92 GHz – 1.93 GHz
 - **RF transmission power**
DECT: 115 mW (max.)
 - **Power source**
120 V AC, 60 Hz
 - **Power consumption**
Standby: 2.2 W
During operation:
3.0 W (when the LED lights are not lit)
4.0 W (when the LED lights are lit)
 - **Operating conditions**
0 °C – 40 °C (32 °F – 104 °F)
up to 90 % relative humidity (non-condensing)
 - **Transmitting range**
Approx. 50 m (160 feet) indoors
Approx. 300 m (1,000 feet) outdoors
 - **Image sensor**
0.3 megapixel CMOS
 - **Minimum illuminance required**
0 lx*1
 - **Focal length**
Fixed (0.4 m (1.3 feet) – infinity)
 - **Angular field of view (camera angle)**
Horizontal: approx. 70°
Vertical: approx. 50°
 - **Motion detection method**
Visual sensor
 - **Motion detection range**
Horizontal: approx. 70°
Vertical: approx. 50°
 - **Adjustable mounting angles**
Horizontal: ±90°
Vertical: facing forward - facing down approx. 60° (adjustable when mounting)
 - **Dimensions (height × width × depth)**
Approx. 102 mm × 75 mm × 75 mm
(4 inches × 2 15/16 inches × 2 15/16 inches)
 - **Mass (weight)**
Approx. 160 g (0.35 lb)
- *1 The infrared LEDs that surround the camera lens will illuminate in low-light conditions.

Appendix

FCC and other information

This device complies with Part 15 of the FCC Rules. Operation is subject to the following two conditions:

(1) This device may not cause harmful interference, and (2) this device must accept any interference received, including interference that may cause undesired operation.

Privacy of communications may not be ensured when using this device.

CAUTION:

Any changes or modifications not expressly approved by the party responsible for compliance could void the user's authority to operate this device.

NOTE:

This equipment has been tested and found to comply with the limits for a Class B digital device, pursuant to Part 15 of the FCC Rules. These limits are designed to provide reasonable protection against harmful interference in a residential installation. This equipment generates, uses, and can radiate radio frequency energy and, if not installed and used in accordance with the instructions, may cause harmful interference to radio communications. However, there is no guarantee that interference will not occur in a particular installation. If this equipment does cause harmful interference to radio or television reception, which can be determined by turning the equipment off and on, the user is encouraged to try to correct the interference by one or more of the following measures:

- Reorient or relocate the receiving antenna.
- Increase the separation between the equipment and receiver.
- Connect the equipment into an outlet on a circuit different from that to which the receiver is connected.
- Consult the dealer or an experienced radio/TV technician for help.

Some devices operate at frequencies that may cause interference to nearby TVs and VCRs. To minimize or prevent such interference, this device should not be placed near or on top of

a TV or VCR. If interference is experienced, move this device further away from the TV or VCR. This will often reduce or eliminate interference.

FCC RF Exposure Warning:

- This product complies with FCC radiation exposure limits set forth for an uncontrolled environment.
- To comply with FCC RF exposure requirements, the device must be installed and operated 20 cm (8 inches) or more between the product and all person's body.
- This product may not be collocated or operated in conjunction with any other antenna or transmitter.
- For body-worn operation, the device must be used only with a non-metallic accessory. Use of other accessories may not ensure compliance with FCC RF exposure requirements.

Notice:

- FCC ID can be found on the rear of the unit.

Customer services

Shop
Accessories!

for all your Panasonic gear

Go to

<http://shop.panasonic.com/support>

Get everything you need to get the most out of
your Panasonic products

Accessories & Parts for your Camera, Phone, A/V
products, TV, Computers & Networking, Personal
Care, Home Appliances, Headphones, Batteries,
Backup Chargers & more...

Customer Services Directory

For Product Information, Operating Assistance,
Parts, Owner's Manuals, Dealer and Service info
go to <http://shop.panasonic.com/support>

You may also contact us directly at: 1-800-272-7033,

Monday - Friday 9 am to 9 pm;

Saturday - Sunday 10 am to 7 pm, EST.

For the hearing or speech impaired TTY: 1- 877-833-8855

As of June 2015

For assistance, please visit <http://shop.panasonic.com/support>

15

Appendix

Limited Warranty (ONLY FOR U.S.A.)

Panasonic Products Limited Warranty

Limited Warranty Coverage (For USA Only)

If your product does not work properly because of a defect in materials or workmanship, Panasonic Corporation of North America (referred to as "the warrantor") will, for the length of the period indicated on the chart below, which starts with the date of original purchase ("warranty period"), at its option either (a) repair your product with new or refurbished parts, (b) replace it with a new or a refurbished equivalent value product, or (c) refund your purchase price. The decision to repair, replace or refund will be made by the warrantor.

Product or Part Name	Parts	Labor
Home Network System Products	One (1) Year	One (1) Year
microSD card (Included model only)	90 days	N/A

During the "Labor" warranty period there will be no charge for labor. During the "Parts" warranty period, there will be no charge for parts. This Limited Warranty excludes both parts and labor for non-rechargeable batteries, antennas, and cosmetic parts (cabinet). This warranty only applies to products purchased and serviced in the United States. This warranty is extended only to the original purchaser of a new product which was not sold "as is".

Mail-In Service--Online Repair Request

Online Repair Request

To submit a new repair request and for quick repair status visit our Web Site at <http://shop.panasonic.com/support>

When shipping the unit, carefully pack, include all supplied accessories listed in the Owner's Manual, and send it prepaid, adequately insured and packed well in a carton box. When shipping Lithium Ion batteries please visit our Web Site at <http://shop.panasonic.com/support> as Panasonic is committed to providing the most up to date information. Include a letter detailing the complaint, a return address and provide a daytime phone number where you can be reached. A valid registered receipt is required under the Limited Warranty.

IF REPAIR IS NEEDED DURING THE WARRANTY PERIOD, THE PURCHASER WILL BE REQUIRED TO FURNISH A SALES RECEIPT/PROOF OF PURCHASE INDICATING DATE OF PURCHASE, AMOUNT PAID AND PLACE OF PURCHASE. CUSTOMER WILL BE CHARGED FOR THE REPAIR OF ANY UNIT RECEIVED WITHOUT SUCH PROOF OF PURCHASE.

Limited Warranty Limits and Exclusions

This warranty ONLY COVERS failures due to defects in materials or workmanship, and DOES NOT COVER normal wear and tear or cosmetic damage. The warranty ALSO DOES NOT COVER damages which occurred in shipment, or failures which are caused by products not supplied by the warrantor, or failures which result from accidents, misuse, abuse, neglect, mishandling, misapplication, alteration, faulty installation, set-up adjustments, misadjustment of consumer controls, improper maintenance, power line surge, lightning damage, modification, introduction of sand, humidity or liquids, commercial use such as hotel, office, restaurant, or other business or rental use of the product, or service by anyone other than a Factory Service Center or other Authorized Servicer, or damage that is attributable to acts of God.

THERE ARE NO EXPRESS WARRANTIES EXCEPT AS LISTED UNDER "LIMITED WARRANTY COVERAGE".

THE WARRANTOR IS NOT LIABLE FOR INCIDENTAL OR CONSEQUENTIAL DAMAGES RESULTING FROM THE USE OF THIS PRODUCT, OR ARISING OUT OF ANY BREACH OF THIS WARRANTY.

(As examples, this excludes damages for lost time, travel to and from the servicer, loss of or damage to media or images, data or other memory or recorded content. The items listed are not exclusive, but for illustration only.)

ALL EXPRESS AND IMPLIED WARRANTIES, INCLUDING THE WARRANTY OF MERCHANTABILITY, ARE LIMITED TO THE PERIOD OF THE LIMITED WARRANTY.

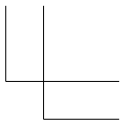
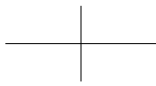
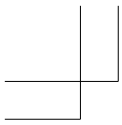
Some states do not allow the exclusion or limitation of incidental or consequential damages, or limitations on how long an implied warranty lasts, so the exclusions may not apply to you. This warranty gives you specific legal rights and you may also have other rights which vary from state to state. If a problem with this product develops during or after the warranty period, you may contact your dealer or Service Center. If the problem is not handled to your satisfaction, then write to:

Consumer Affairs Department
Panasonic Corporation of North America
661 Independence Pkwy
Chesapeake, VA 23320

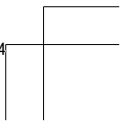
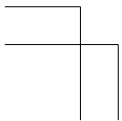
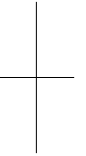
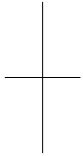
PARTS AND SERVICE, WHICH ARE NOT COVERED BY THIS LIMITED WARRANTY, ARE YOUR RESPONSIBILITY.

As of June 2015

Notes



Notes



IMPORTANT!

If your product is not working properly. . .

- ① **Reconnect the AC adaptor to the camera.**
- ② Use the **Home Network app** to access the **User's Guide** and refer to the **Troubleshooting** section.



Visit our Web site: <http://shop.panasonic.com/support>
• FAQ and troubleshooting hints are available.

For your future reference

We recommend keeping a record of the following information to assist with any repair under warranty.

Serial No.	Date of purchase
(found on the bottom of the stand) Name and address of dealer	
Attach your purchase receipt here.	

Panasonic Corporation of North America

Two Riverfront Plaza, Newark, NJ 07102-5490

© Panasonic Corporation 2014

Panasonic®

Guía de instalación

Sistema de red doméstico
Cámara interior
Modelo n° **KX-HNC210**



Gracias por adquirir un producto Panasonic.

Este documento explica cómo instalar la cámara interior de forma correcta.
Para obtener detalles sobre cómo usar el sistema, consulte la Guía del usuario (página 9).

Lea este documento antes de usar la unidad, y guárdelo para consultarlo en el futuro.
Para obtener ayuda, comuníquese con nosotros llamando al 1-800-272-7033 o visite nuestro sitio web:

<http://shop.panasonic.com/support> para clientes en los EE. UU. (solo en inglés)

Por favor, registre su producto: <http://shop.panasonic.com/support>



PNQX6698WA

PNQX6698WA CC0814WK3126 (E)



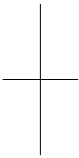
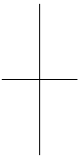
Tabla de Contenido

Configuración

Nombres de los componentes y funciones	3
Led indicador	3
Resumen de configuración	3
Cómo registrar la cámara	3
Información acerca de las características del sensor	4
Información acerca del modo de visión nocturna	5
Confirmación del área de uso	5
Conexiones	6
Montaje en la pared	7

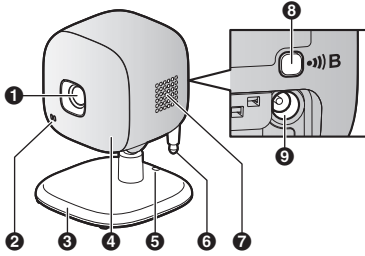
Apéndice

Cómo probar el alcance de detección de movimiento	9
Acceso a la Guía del usuario	9



Configuración

Nombres de los componentes y funciones



- 1** Unidad del lente
- 2** Micrófono
- 3** Soporte
- 4** Led indicador
- 5** Orificios
Puede evitar que la cámara se caiga pasando una cuerda a través del orificio en el soporte.
- 6** Sensor de temperatura
- 7** Altavoz
- 8** [••]B
Se usa para registrar la cámara en el hub.
- 9** Clavija de corriente continua

Led indicador

Puede usar el Led indicador para confirmar el estado de la cámara.

Indicador	Estado
Apagado	Sin energía, o el Led indicador está apagado*1
Verde, encendido	Funcionamiento normal*1
Verde, parpadeando lentamente	Modo de registro
Rojo	Se detectó movimiento
Rojo, parpadeando lentamente	Las imágenes se están visualizando o grabando

Indicador	Estado
Rojo, parpadeante	La cámara está fuera de alcance del hub o falla el dispositivo
Ámbar, parpadeo lento	La cámara no está registrada en el hub

*1 Puede configurar la cámara de forma tal que el Led indicador no se encienda durante el funcionamiento normal. Para obtener más información, consulte la Guía del usuario (página 9).

Resumen de configuración

- 1 Configuración inicial**
Asegúrese de poder acceder al sistema mediante su dispositivo móvil. Para obtener más detalles, consulte la Guía de configuración del sistema que viene con su hub.
- 2 Registro**
Solo se requiere si se compró la cámara por separado (es decir, no como parte de un paquete).
- 3 Confirmación del área de uso**
Lea la información de este documento para confirmar que el área de uso deseada sea la adecuada para el correcto funcionamiento.
- 4 Conexión**
Coloque la cámara en la ubicación deseada y conéctela a la toma de corriente.

Cómo registrar la cámara

Este procedimiento no es necesario para unidades que son parte de un paquete.

Antes de que pueda usar la cámara, se debe registrar en el hub.
Si la cámara no se ha registrado a un hub, el Led indicador de la cámara parpadea lentamente en ámbar.
Puede registrar cada unidad mediante los botones de registro o la aplicación **[Home Network]**.

Configuración

Nota:

- Antes de registrar la cámara, asegúrese que todos los adaptadores de corriente del hub y la cámara estén conectados y cada dispositivo reciba alimentación.

Uso de los botones de registro

- 1 Hub:**
Oprima y mantenga oprimido **[••]B** **CAMERA** hasta que el Led indicador parpadee lentamente en verde.
- 2 Cámara:**
Oprima y mantenga oprimido **[••]B** hasta que el Led indicador parpadee lentamente en verde (página 3).
 - Cuando se ha completado el registro, el hub emitirá un pitido largo.

Nota:

- Para cancelar sin registrar la cámara, oprima **[••]B** en el hub y en la cámara de nuevo.
- Si el registro falla, el hub emitirá varios pitidos cortos.

Uso de la aplicación

Cuando registre su cámara con la aplicación **[Home Network]**, puede asignar un nombre a sus dispositivos y agruparlos por ubicación. Para obtener más información, consulte la Guía del usuario (página 9).

Información acerca de las características del sensor

La cámara tiene 3 características de sensor: un sensor visual que se usa para la detección de movimiento, un sensor de temperatura y un sensor de sonido. Lea la información siguiente sobre cada sensor antes de decidir dónde instalar la cámara.

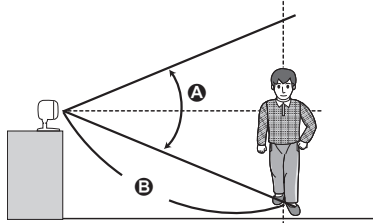
Nota:

- Las funciones del sensor de la cámara no están preparadas para que se las use en situaciones que requieran alta confiabilidad. No recomendamos el uso de las características del sensor en esas situaciones.

- Panasonic no asume ninguna responsabilidad por lesiones o daños provocados por el uso de las características del sensor de la cámara.

Uso de la luz visible para detectar movimiento

La cámara puede detectar el movimiento al reconocer los cambios en el brillo de áreas que la cámara puede ver.



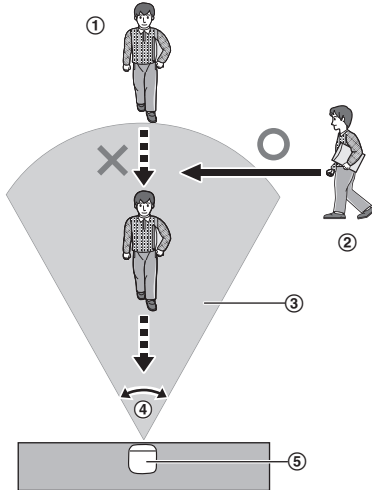
- A** Alcance de detección vertical: aprox. 50°
- B** Distancia de movimiento detectable: hasta 5 m (16.4 pies) cuando la sensibilidad de movimiento se configura en el máximo con la aplicación **[Home Network]**.

Nota:

- Es posible que no se detecte correctamente el movimiento cuando el objeto en movimiento y el fondo tengan colores similares.
- Es posible que no se detecte correctamente el movimiento cuando haya cambios bruscos en el nivel general de brillo, como cuando se encienden las luces.
- Se dificulta la detección cuando la imagen está oscura.
- Puede ajustar la sensibilidad de la función de detección de la cámara y seleccionar las áreas de la imagen de la cámara que se monitorean para la detección de movimiento. Para obtener más información, consulte la Guía del usuario (página 9).

Dirección del movimiento

Es más fácil detectar objetos que se mueven de lado frente a la cámara y es más difícil detectar objetos que se mueven de frente hacia la cámara.



- 1 Es difícil detectar movimiento directamente hacia la parte delantera de la cámara.
- 2 Es fácil detectar movimiento lateral frente a la cámara.
- 3 Alcance de detección
- 4 Alcance de detección horizontal: aprox. 70°
- 5 Cámara

Sensor de temperatura

El sensor se desactiva cuando se supera el rango de temperatura establecido.

Nota:

- Es posible que el sensor de temperatura no detecte la temperatura de forma adecuada, si la cámara se expone a las brisas cálidas o frías del sistema de calentamiento/enfriamiento.
- Puede ajustar la configuración de temperatura del sensor de temperatura. Para obtener más información, consulte la Guía del usuario (página 9).

Sensor de audio

El sensor se activa cuando se supera el nivel de audio establecido.

Nota:

- El sensor de audio no funciona mientras la función canción de cuna de la cámara está activada.
- El sensor de audio no funcionará como desea si la cámara se coloca en un ambiente ruidoso.
- Puede ajustar la configuración del nivel de audio del sensor de audio. Para obtener más información, consulte la Guía del usuario (página 9).

Información acerca del modo de visión nocturna

La cámara presenta una selección de indicadores Led infrarrojos que se encienden automáticamente en condiciones de baja iluminación, lo que permite que las imágenes de las cámaras puedan visualizarse cuando los alrededores están oscuros.

Nota:

- Cuando el modo de visión nocturna está activo, es posible que los colores de las imágenes de la cámara no sean los normales.
- Cuando el modo de visión nocturna esté activo, la selección de indicadores Led infrarrojos que rodean el lente de la cámara son de un color rojo tenue que puede verse en la oscuridad.
- Si la cámara está instalada frente a una ventana y apunta directamente a la ventana, es posible que la calidad de las imágenes sea baja cuando el modo de visión nocturna esté activo.

Confirmación del área de uso

Alcance de la comunicación inalámbrica

El alcance de la comunicación inalámbrica de cada dispositivo en el sistema del hub es de aproximadamente 50 m (160 pies) en interiores y de aproximadamente 300 m (1,000 pies) en el exterior. Es posible que la comunicación

Configuración

inalámbrica no sea tan confiable cuando se encuentran los obstáculos siguientes entre el hub y otros dispositivos.

- Puertas o pantallas metálicas
- Paredes que contengan aislamiento de aluminio
- Paredes de hormigón o hierro corrugado
- Ventanas de vidrio doble
- Varias paredes
- Cuando los dispositivos están en pisos o edificios diferentes

Nota:

- Si el Led indicador de la cámara parpadea en rojo, se encuentra fuera de alcance del concentrador. En este caso, confirme todas las conexiones, incluso las del hub.

Precauciones respecto al área de uso

Usar la cámara en las áreas siguientes puede causar deformación, averías o fallas de operación.

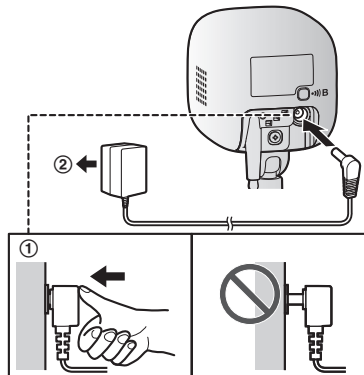
- A la luz del sol
- En áreas expuestas a grasa o vapor, como en cocinas
- Cerca del fuego o calefactores
- Cerca de campos magnéticos (como cerca de hornos microondas e imanes)
- Áreas sujetas a cambios extremos de temperatura, como cerca de aires acondicionados
- Áreas con objetos reflectivos, como vidrios, que pueden interferir con la detección de la variación de temperatura
- Áreas donde objetos de iluminación afectan la temperatura (como luces fluorescentes)
- Cerca de dispositivos que emiten ondas de radio potentes, como teléfonos móviles

Conexiones

- ① Inserte el enchufe del adaptador de corriente firmemente en la clavija de corriente continua.
- ② Conecte el adaptador de corriente a la toma de corriente.

Nota:

- Use solo el adaptador de corriente alterna Panasonic PNLV236 que se suministra.



Nota acerca de las conexiones de alimentación

Adaptador de corriente alterna

- El adaptador de corriente debe permanecer conectado en todo momento (es normal que el adaptador se caliente durante su uso).
- El adaptador de corriente debe estar conectado a un enchufe de corriente orientado verticalmente o en una toma de corriente alterna colocada en el piso. No conecte el adaptador de corriente alterna a una toma de corriente montada en el techo, ya que el peso del adaptador puede hacer que se desconecte.

Falla en el suministro eléctrico

- La cámara no funciona durante las fallas del suministro eléctrico.

Cómo colocar la cámara en un área plana

Cuando coloca la cámara en un área plana, puede prevenir que caiga la cámara pasando una cuerda a través del orificio (página 3) en el soporte.

- 1 Pase una cuerda (no incluida) por el orificio en el soporte.
- 2 Ate la cuerda y engánchela al apoyo.

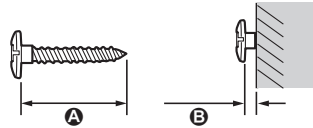
Montaje en la pared

- Monte la cámara en una ubicación estable donde la unidad se pueda colocar con seguridad.
- El adaptador de corriente debe estar conectado a un enchufe de corriente orientado verticalmente o en una toma de corriente alterna colocada en el piso. No conecte el adaptador de corriente alterna a una toma de corriente montada en el techo, ya que el peso del adaptador puede hacer que se desconecte.
- No coloque la cámara sobre un material blando. Podría caerse, romperse o provocar lesiones.
- No monte la cámara en los siguientes lugares: tablas de yeso, ALC (concreto celular ligero en autoclave), bloque de concreto, contrachapados con grosor inferior a 25 mm (1 pulgada), etc.

- 1 Coloque los tornillos (no se suministran) en la pared.

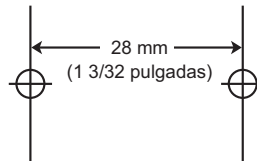
A Más largo que 20 mm (25/32 pulgadas)

B Espacio de 1.3 mm (1/32 pulgadas)



Nota:

- Use la siguiente plantilla cuando determine la ubicación de los orificios de los tornillos.

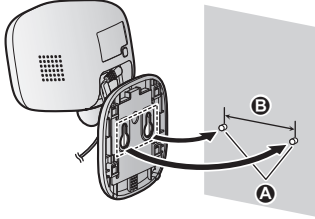


Configuración

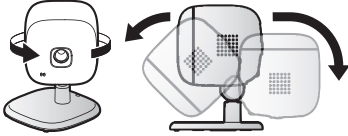
- 2 Coloque la cámara en la pared.

A Tornillos

B 28 mm (1 3/32 pulgadas)



- 3 Ajuste el ángulo de la cámara.



Cómo probar el alcance de detección de movimiento

Después de haber instalado la aplicación **[Home Network]** en su dispositivo móvil, puede usarlo para probar el desempeño de la función de detección de movimiento. Para obtener más información, consulte la Guía del usuario (página 9).

- 1 Inicie la aplicación **[Home Network]** y muestre imágenes en vivo desde la cámara.
- 2 Muévase a un área dentro de la zona visible de la cámara.
- 3 Mientras se mueve cerca de la cámara, utilice el dispositivo móvil para observar dónde está en el área visible de la cámara cuando se activa la función de detección de movimiento.
 - Cuando se activa la función de detección de movimiento, el Led indicador de la cámara se enciende en rojo durante 3 segundos.
- 4 Observe las zonas del área visible de la cámara cuando se detecta movimiento y haga los ajustes necesarios.

Nota:

- Puede ajustar el área detectable mediante el sensor visual. Para obtener más información, consulte la Guía del usuario (página 9).


Cómo probar el micrófono

Para probar el micrófono, hable fuerte y claro en el micrófono mientras un usuario de dispositivo móvil observa las imágenes en vivo desde la cámara.


Acceso a la Guía del usuario

La Guía del usuario es una colección de documentación en línea que lo ayuda a aprovechar al máximo la aplicación **[Home Network]**.

1 iPhone®/iPad®

Toque  en la pantalla de inicio de la aplicación.

Dispositivos Android™

Toque  u oprima el botón menú de su dispositivo en la pantalla de inicio de la aplicación.

2 Toque **[Guía del Usuario]**.

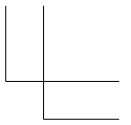
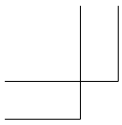
Nota:

- No se admite Microsoft® Windows® Internet Explorer® 8 y versiones anteriores.
- Se recomienda Android 4.1 y versiones posteriores.
- También puede acceder a la Guía del usuario mediante la página web a continuación.

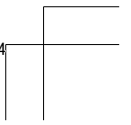
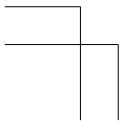
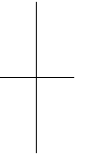
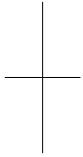


www.panasonic.net/pcc/support/tel/homenetwork/manual/

Notas



Notas



Notas
