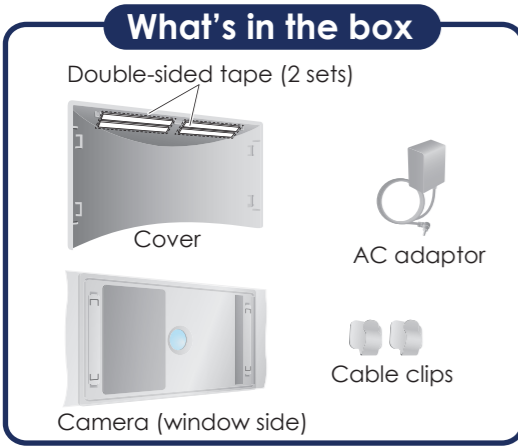


# Quick Start Guide



Let's get started!



\*PNQW5976ZA\*  
PNQW5976ZA PP0620KT0

## WARNINGS

Failure to observe **WARNINGS** could result in damage to the product and any of its room exteriors.

- **Please note:** Failure to properly attach the suction cup in accordance to the quick start guide may result in the product detaching from the window. The camera should be reattached regularly to avoid premature detachments or we recommend using the double-sided tape to secure the camera to the window.
- The double-sided tape has an average bonding life of 2 years and requires replacement of the tape to ensure the proper attachment surface connection.
- The wire holding clip should be attached on a surface that has been tested to avoid possible damage to paint; plaster walls; wall paper etc.
- The enclosed double-sided tapes are designed to be used on standard window glass surfaces. If your window contains materials such as tinted film, we recommend you consult with the window manufacturer prior to use to avoid window damage.

**1. Clean the window before installation**

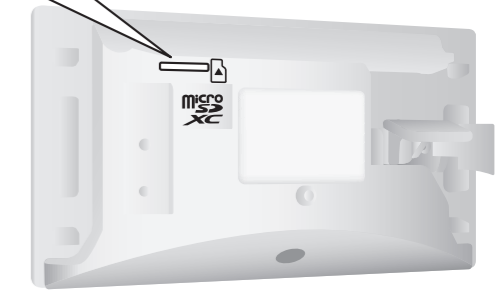
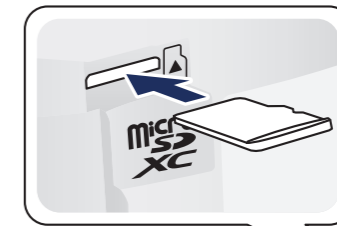
- Remove dirt and oil with a towel and detergent, and then dry completely.



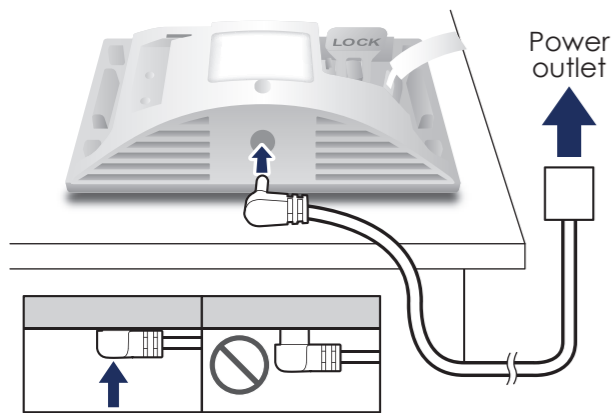
• The window is an image.

**2. Insert a microSD card**

- microSD cards are not included.



**3. Fully insert the AC adaptor connector**



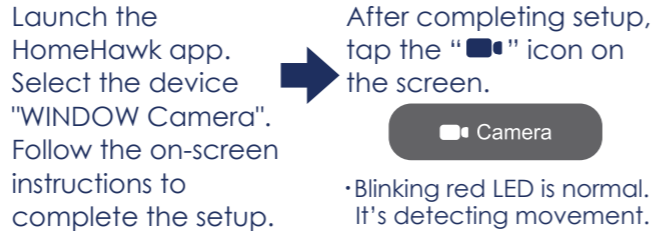
**4. Application Setup**

① Install the HomeHawk app



•Do you have it already?  
Make sure the version is the latest.

② Set up the app



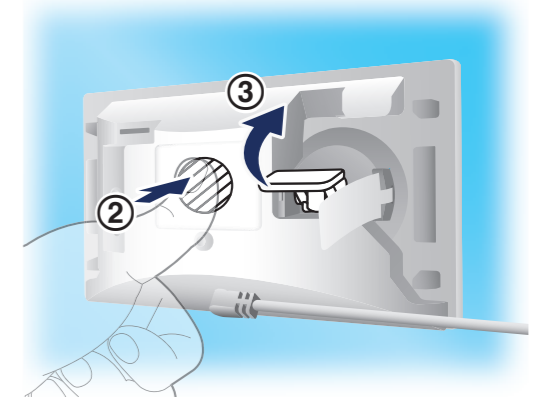
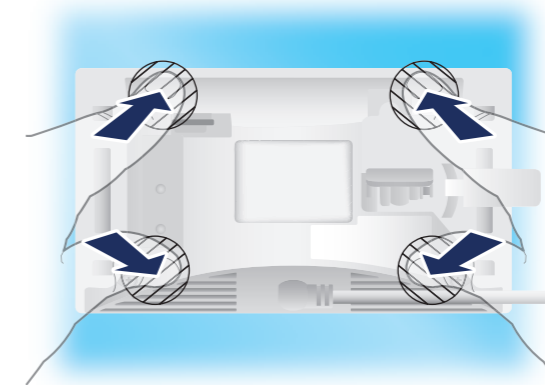
•Blinking red LED is normal.  
It's detecting movement.

**5. Remove the transparent film (window side)**



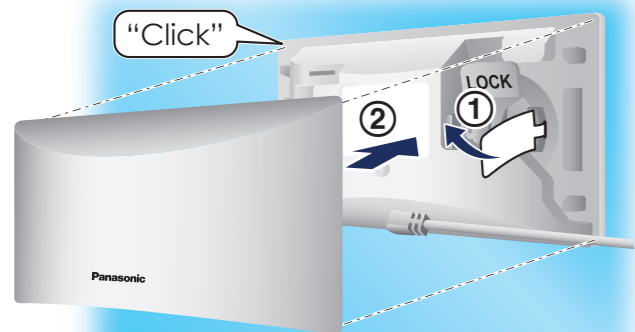
**6. Place the camera on the window**

- ① Press the entire camera firmly against the window for 3 seconds
- ② While pressing the center,
- ③ Pull up the LOCK lever to secure the camera

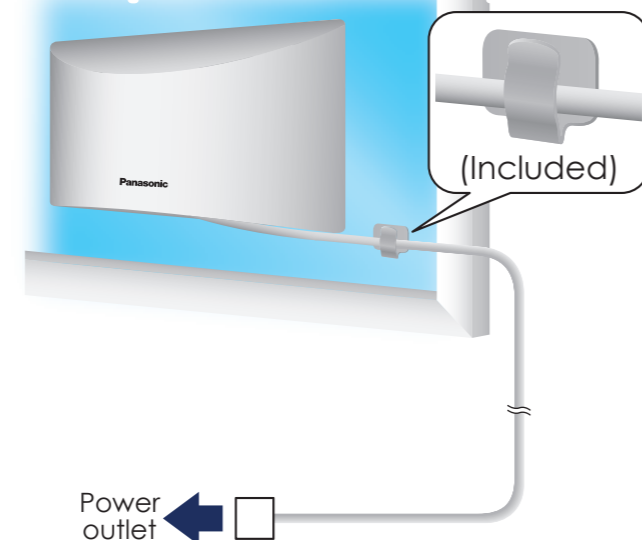


**7. Attach the cover**

- ① Tuck removal tab inside
- ② Attach the cover



**8. Manage the power cable with the cable clips as necessary**



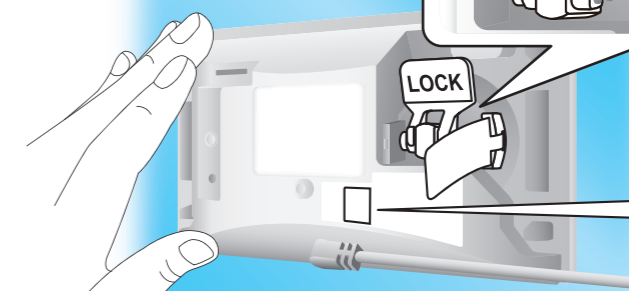
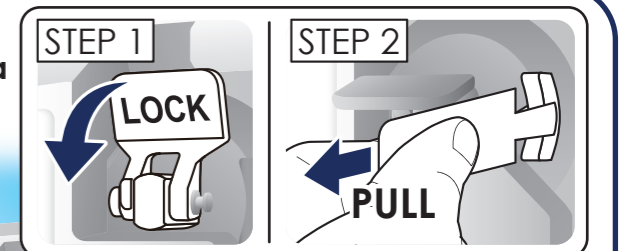
## To assure the camera doesn't fall !!

Reattach suction cup when notification pops up (3 months).



② Want to attach it long term? → Go to Page 2

Remove Camera 2 steps



You can also access removal information from the QR code.

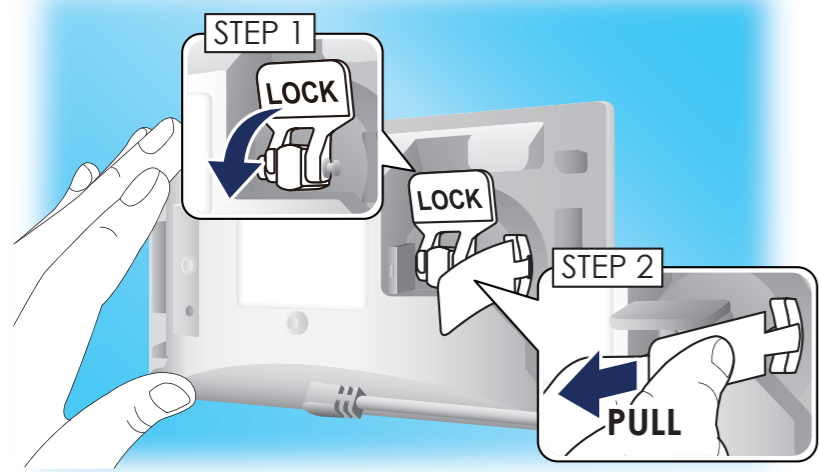
# Alternate method: Long-term attachment

**Specific examples to use double-sided tape:**  
 • When you are away from the home for more than 3 months.  
 • When you don't want to reattach the camera periodically.

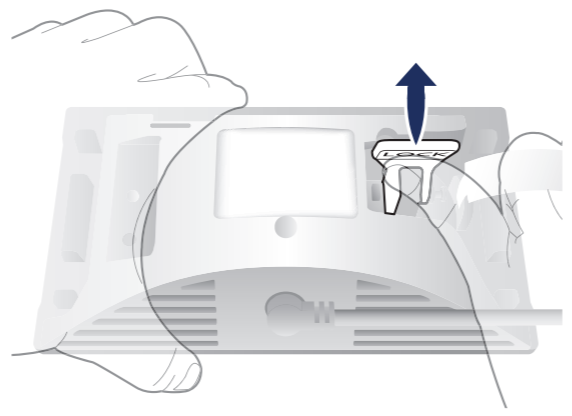
Did you confirm the best viewing location?

Double-sided tape cannot be reused once removed.

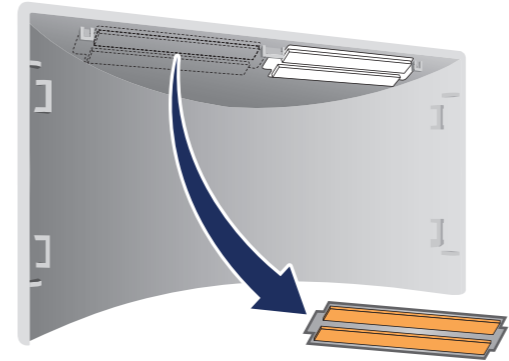
9. Remove the camera from window



10. Pull up the LOCK lever

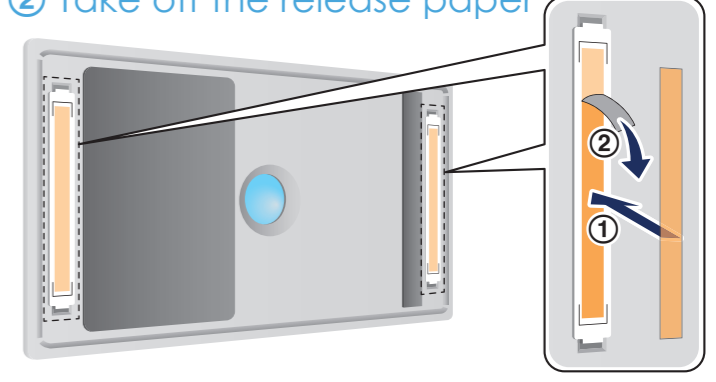


11. Take out one set of the double-sided tape from the inside of the cover  
 • 1 set is extra for future use.



12. Attach the double-sided tape

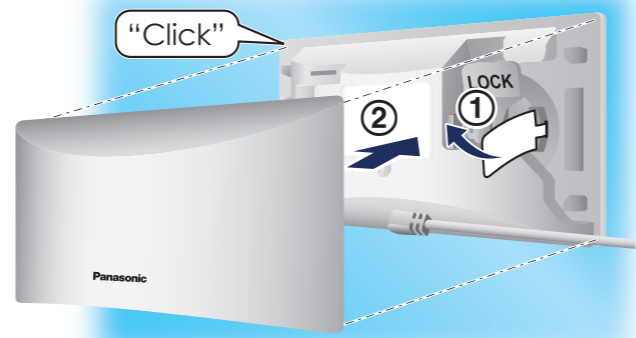
- ① Attach the double-sided tape to the two locations  
 • Hold down the entire tape firmly.
- ② Take off the release paper



13. Place the camera on the window and press firmly for 30 seconds



14. Attach the cover  
 ① Tuck removal tab inside  
 ② Attach the cover



You can also watch a video about attaching with double-sided tape.  
<https://shop.panasonic.com/HHvideo2>



**Need More Help?**

If you still need more help, please refer to the enclosed **Information and Troubleshooting Guide** for additional information, handy tips, and detailed instructions. Or visit us **online** at

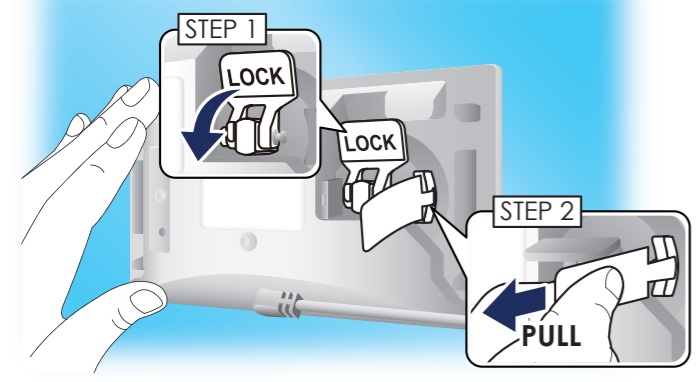
**[www.panasonic.ca/english/support](http://www.panasonic.ca/english/support)**

to view helpful how-to videos, find useful tips, and to get support.

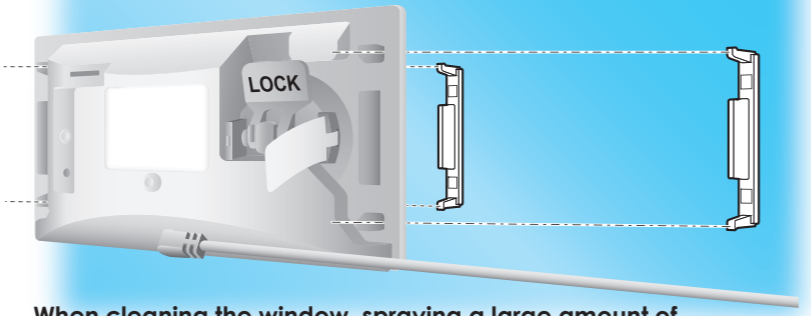
## Temporarily removing the camera

**When should I do this?**  
 • When cleaning the window  
 • When opening the window

① Remove the camera from window



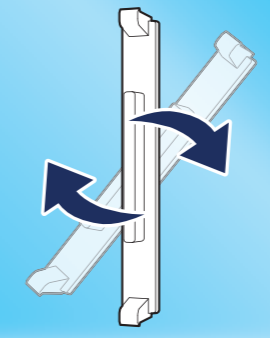
② The double-sided tape slot brackets remain on the window



When cleaning the window, spraying a large amount of water or detergent on the slot bracket may reduce the adhesion.

## Removing the slot brackets

• If you remove the brackets, you cannot return the camera to its original position.



You can also watch a video about removing with double-sided tape.  
<https://shop.panasonic.com/HHvideo4>

