

Panasonic®

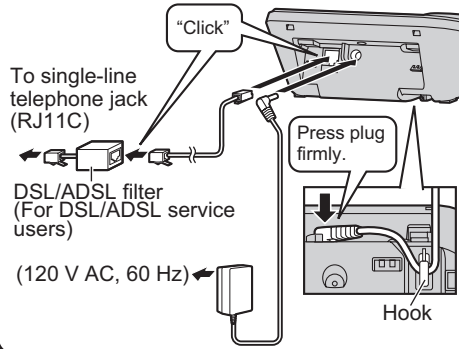
Model No. **KX-TG9331/KX-TG9332**
KX-TG9333/KX-TG9334
KX-TG9341/KX-TG9342
KX-TG9343/KX-TG9344

Quick Guide

Setting up

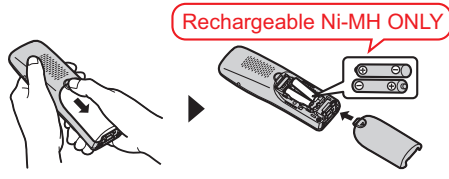
Base unit

- Use only the supplied Panasonic AC adaptor PQLV207.
- Use only the supplied telephone line cord.



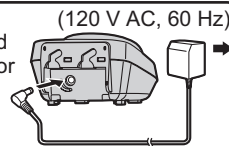
Handset

- **USE ONLY Ni-MH batteries AAA (R03) size.**
- **Do NOT use Alkaline/Manganese/Ni-Cd batteries.**
- **Ensure correct polarities (⊕, ⊖) when installing the batteries.**



Charger*1

- Use only the supplied Panasonic AC adaptor PQLV209.



CHARGE FOR ABOUT 7 HOURS



Confirm "Charging" is displayed.



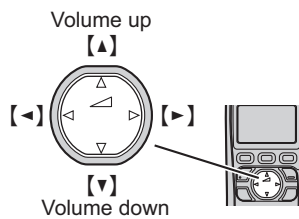
*1 KX-TG9332/KX-TG9333/KX-TG9334/KX-TG9342/KX-TG9343/KX-TG9344

Operating tips

Using the navigator key

The handset navigator key can be used to navigate through menus and to select items shown on the display by pressing **[▲]**, **[▼]**, **[◀]**, or **[▶]**.

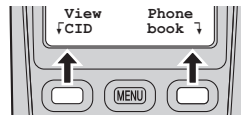
To adjust the receiver or speaker volume, press **[▲]** to increase the volume, or press **[▼]** to decrease the volume repeatedly while talking.



Soft keys

The handset features 2 soft keys. By pressing a soft key, you can select the feature shown directly above it on the display.

[Select], **[Save]**, **[OK]**, and additional other functions are assigned to soft keys. Pay attention to soft keys to find functions you need during handset operation.



Date and time (Handset)

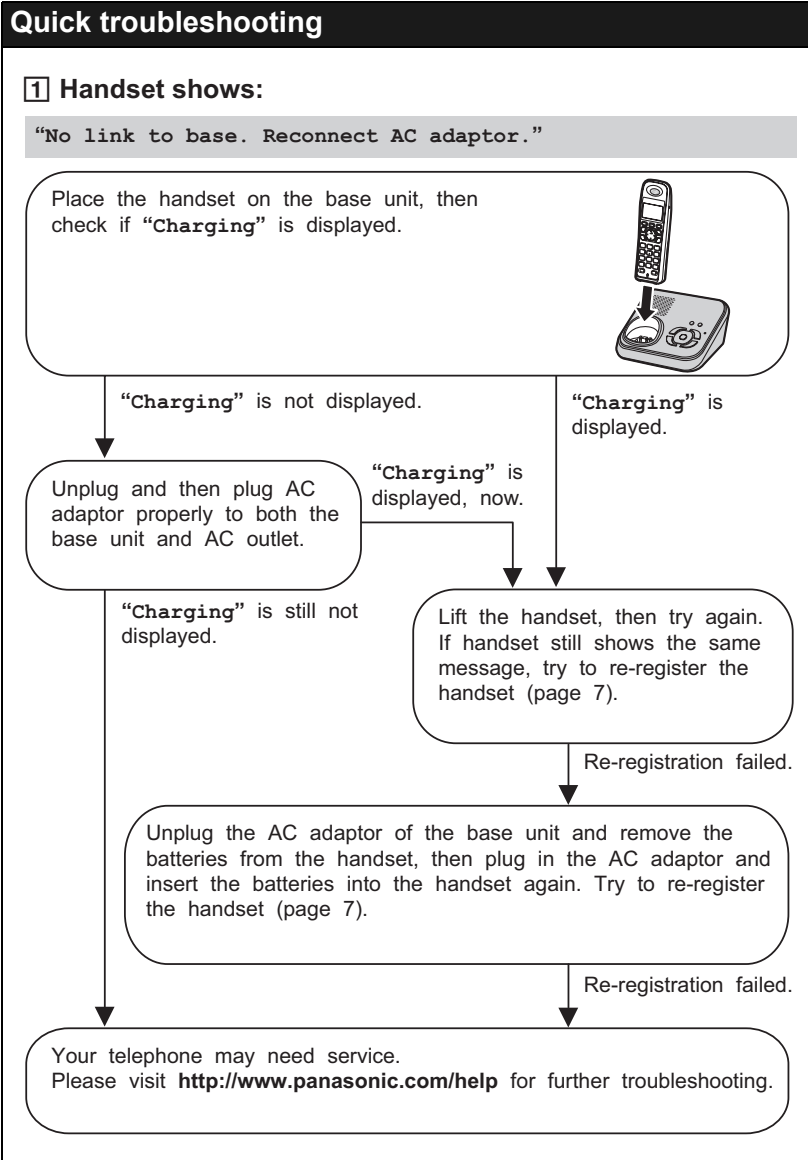
- 1 **[MENU]** → **[#][1][0][1]**
- 2 Enter the current month, date, and year.
- 3 Enter the current hour and minute (12-hour clock format).
- 4 **[AM/PM]**: Select "AM" or "PM". → **[Save]** → **[OFF]**

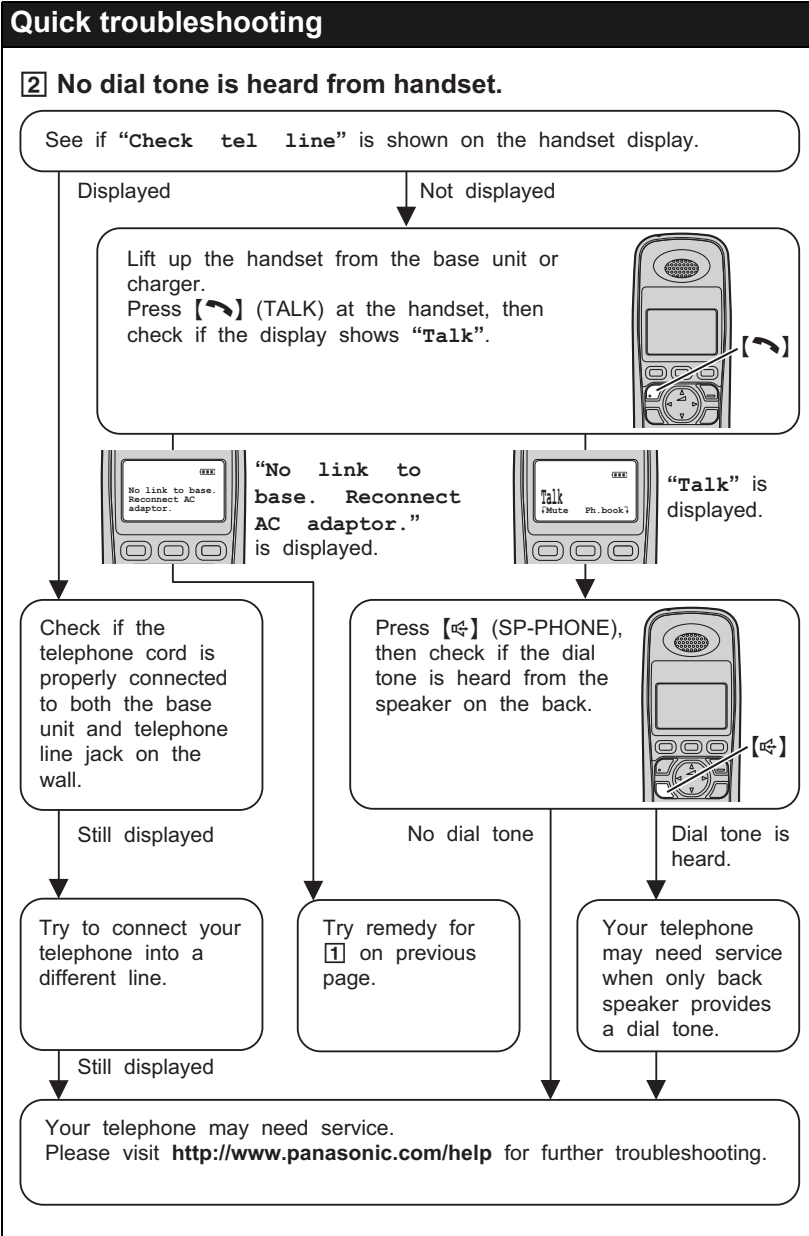
For further information, visit <http://www.panasonic.com/help> or refer to operating instructions.

Basic operations	
Making/Answering calls (Handset)	
Making calls	Dial the phone number. → [📞]/[📞]
Answering calls	[📞]/[📞]
To hang up	[OFF]
To adjust the receiver or speaker volume	Press [▲] or [▼] repeatedly while talking.
Making a call using the redial list	[REDIAL] → [▼]/[▲]: Select the desired phone number. → [📞]
To adjust the handset ringer volume	1 [MENU] → [📞][1][6][0] 2 [▼]/[▲]: Select the desired volume. → [Save]
Making/Answering calls (Base unit) KX-TG9341/KX-TG9342/KX-TG9343/KX-TG9344	
Making calls	[SP-PHONE] → Dial the phone number.
Answering calls	[SP-PHONE]
To hang up	[SP-PHONE]
To adjust the speaker volume	Press [▲] or [▼] repeatedly while talking.
Redialing the last number dialed	[SP-PHONE] → [REDIAL]
To adjust the base unit ringer volume	Press [▲] or [▼] repeatedly to select the desired volume. • To turn the ringer off, press and hold [▼] until the unit beeps 2 times.
Shared phonebook (Handset)	
Adding entries	1 [Phonebook] → [Add] 2 Enter the party's name (16 characters max.). → [Next] 3 Enter the party's phone number (32 digits max.). → [Next] → [Save] → [OFF] • To enter a name, see the character table in the operating instructions.
Making calls	[Phonebook] → [Search] → [▼]/[▲]: Select the desired entry. → [📞]
Answering system (Base unit)	
Answering on/off	Press [ANSWER ON] to turn on/off the answering system.
Listening to messages	[▶]

Frequently asked questions	
Question	Cause/solution
How can I increase the handset volume level?	<ul style="list-style-type: none"> ● Press navigator key [▲] repeatedly while talking.
Why is the conversation noisy or cutting off?	<ul style="list-style-type: none"> ● Try to relocate the base unit so that distance from location to use the handset will be minimized. ● If the same problem occurs even if the handset is next to the base unit, send your unit for service.
Can I add another accessory handset to my base unit?	<ul style="list-style-type: none"> ● Yes, you can add up to 6 handsets (including the handset(s) sold with your own base unit) to a single base unit. ● To purchase accessory handset (KX-TGA630/KX-TGA930/KX-TGA935), please visit http://www.panasonic.com or call 1-800-332-5368. TTY users (hearing or speech impaired users) can call 1-866-605-1277.
Can I keep batteries charging all the time?	<ul style="list-style-type: none"> ● You can leave the handset on the base unit or charger anytime. This will not harm the batteries.
How can I answer a call waiting call (2nd call)?	<ul style="list-style-type: none"> ● Press [CALL WAIT] when you hear call waiting tone.

For further information, visit <http://www.panasonic.com/help> or refer to operating instructions.





Registering a handset to a base unit

The supplied handset and base unit are pre-registered. If for some reason the handset is not registered to the base unit, register the handset.

Handset

[MENU] → [#][1][3][0]



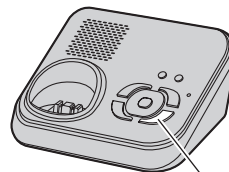
[MENU]



Base unit

Press and hold [LOCATOR] for 4 seconds until the registration tone sounds.

- The next step should be completed within 90 seconds.
- While registering, "Base registering" is displayed on all registered handsets.

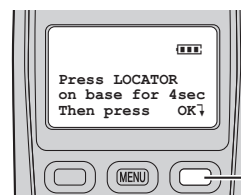


[LOCATOR]



Handset

Press [OK], then press [OFF] after a long beep sounds.



[OK]

For further registration information, visit <http://www.panasonic.com/RegisterYourHandset>

IMPORTANT!

If your product is not working properly. . .

1 Read this Quick Guide or Operating Instructions

- If you lost the Operating Instructions, you can download a copy at <http://www.panasonic.com/help>

2 Visit our website:

- <http://www.panasonic.com/help>**
- FAQs and troubleshooting hints are available.

3 Contact us via the web at:

- <http://www.panasonic.com/contactinfo>**

4 Call us at:

- 1-800-211-PANA (1-800-211-7262)**
- Monday - Friday 9:00am - 9:00pm (EST),
Saturday/Sunday 10:00am - 7:00pm (EST)

To order a replacement battery,
please call: 1-800-332-5368

Or visit: <http://www.panasonic.com/batterystore>