

Accessibility

Turning on the volume booster (Handset)

⚠ WARNING:

- This feature is designed for users who are hard of hearing. If other users use the phone, be sure to turn this feature off.
- Do not use this feature unnecessarily. High volume emitted from the product may cause hearing damage.
- Pressing the **[BOOST]** key activates the volume booster feature. Use this key with care. At its loudest setting (volume and volume booster features set to their highest settings), the product can output sound at up to 40 dB. To prevent hearing damage, we recommend that you set this product to the lowest volume setting at which you can hear adequately.

- 1 Press **[BOOST]** while on a call.
 - The BOOST indicator lights in red.

- 2 Press **[+]** or **[-]** on the side repeatedly to select the desired volume.

Speech booster (making your voice louder) (Handset)

⚠ WARNING:

- The speech booster feature can be used to increase the volume of your voice heard by the other party. If this feature is used unnecessarily, your voice may be too loud. We recommend that you use this feature only if your voice is too quiet to be heard by the other party.

- 1 Press **[MENU]** while on a call.

- 2 **[↕]**: "Boost speech on" or "Boost speech off" → **[SELECT]**

Accessibility

Setting the talking keypad (Handset)

- 1 **[MENU] # 7 5 0**

- 2 **[↕]**: Select the desired setting. → **[SAVE]** → **[OFF]**

Setting the message indicator (Handset/Base unit)

- 1 For handset: **[MENU] # 2 7 8**
For base unit (using a handset): **[MENU] # * 2 7 8**

- 2 **[↕]**: Select the desired setting and press **[SELECT]**.

- 3 **[SAVE]** → **[OFF]**

Slow talk (Handset)

To activate this feature or change the current setting, press **[SLOW]**.

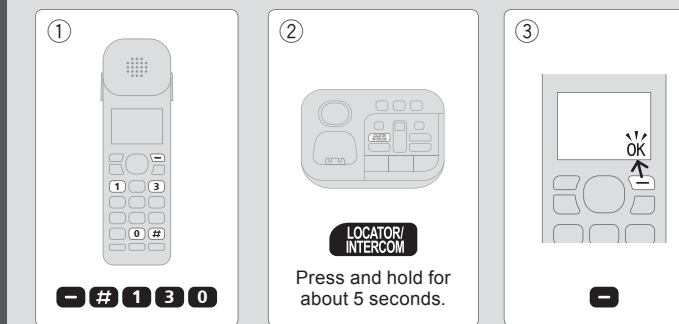
Slow talk (Base unit)



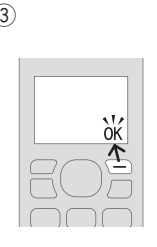
To activate this feature or change the current setting, press **[SLOW TALK]**.

Frequently asked questions

Why is displayed?

Re-register the handset.



- 1  **# 1 3 0**
- 2  Press and hold for about 5 seconds.
- 3  **OK**

Can I buy additional/replacement accessories on the Internet?



Yes, please visit our Web site:
shopping.panasonic.ca

Panasonic Canada Inc.
5770 Ambler Drive, Mississauga, Ontario L4W 2T3

© Panasonic Corporation 2016

Printed in Malaysia

PNQW5140YA TT0616YK1027

Panasonic

Getting Started and Accessibility

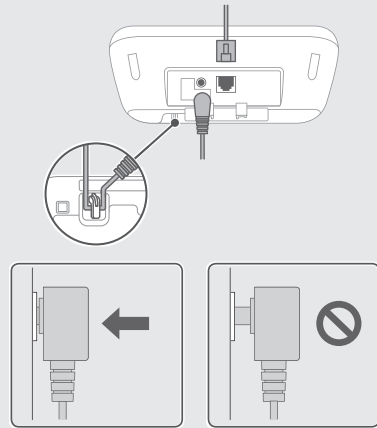
Amplified Digital Cordless Telephone
with Answering Machine

KX-TGM470C

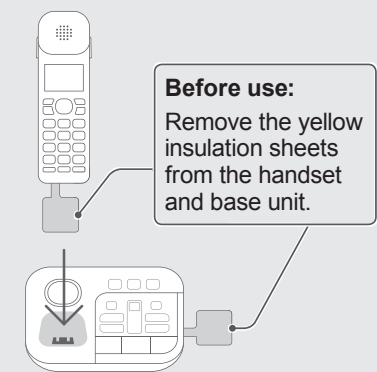


Setting up I

► Connections



► Battery charging



-2-

Controls

Receiver

TONE
Selecting a tone setting while talking

VOL. + / -
- Adjusting the receiver volume while talking
- Adjusting the ringer volume

FLASH
TALK
Making/Answering calls

Headset jack

SP-PHONE
Using the speakerphone

BOOST
Turning on the volume booster while talking

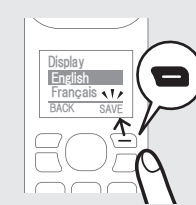
SLOW (SLOW TALK)
Slowing down the speed of the other party's voice



-3-

Setting up II

► Select language



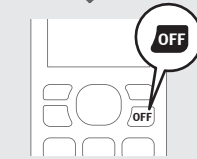
► Date and time



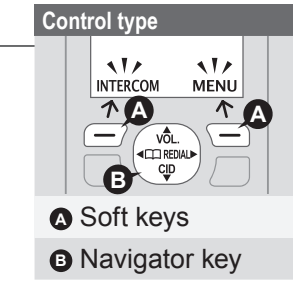
Enter the date.



Enter the time.



-4-



VOLUME
- Adjusting the speakerphone volume while talking
- Adjusting the ringer volume

RINGER OFF
FLASH/CALL WAIT

M1 - M3
Memory dial

SLOW TALK
TONE

Message counter

ERASE/MUTE
- Erasing messages
- Activating the mute

Repeating message
Skipping message

SP-PHONE
Using the speakerphone

PLAY/STOP
- Listening to messages
- Stopping playback

Basic operations (Handset)

Making calls	Dial the phone number. → TALK /
Answering calls	TALK /
Hang up	OFF

Basic operations (Base unit)

Making calls using memory dial keys	Press and hold the desired memory dial key (M1 - M3). Note: • You must add phone numbers to the memory dial keys before you can use this feature. Refer to the operating instructions for details.
Answering calls	
Hang up	
Answering system on/off	BD
Listening to messages	

Accessibility

Tone control (Handset/Base unit)

Handset:

- 1 Press **[TONE]** on the side repeatedly to select the desired setting while talking.
- 2 To exit, press **[BACK]** or wait for a few seconds.

Base unit:

- 1 Press and hold **[TONE]** for about 2 seconds while talking.
- 2 Press **+** or **-** repeatedly to select the desired setting.
- 3 To exit, press **[TONE]** or wait for about 5 seconds.

-5-