



Quick Start Guide

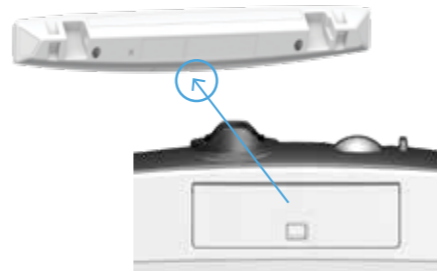
Thank you for welcoming HomeHawk into your home.

Let's get started!

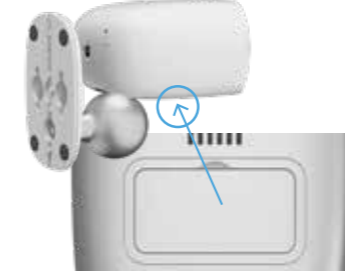
Save time by following these steps in order...

If you still need more help, please refer to the enclosed **Installation Guide** for additional information, handy tips, and detailed instructions. Or visit us **online** at <https://panasoniccustomercommunity.force.com/default/s/> to view helpful how-to videos, find useful tips, and to get support.

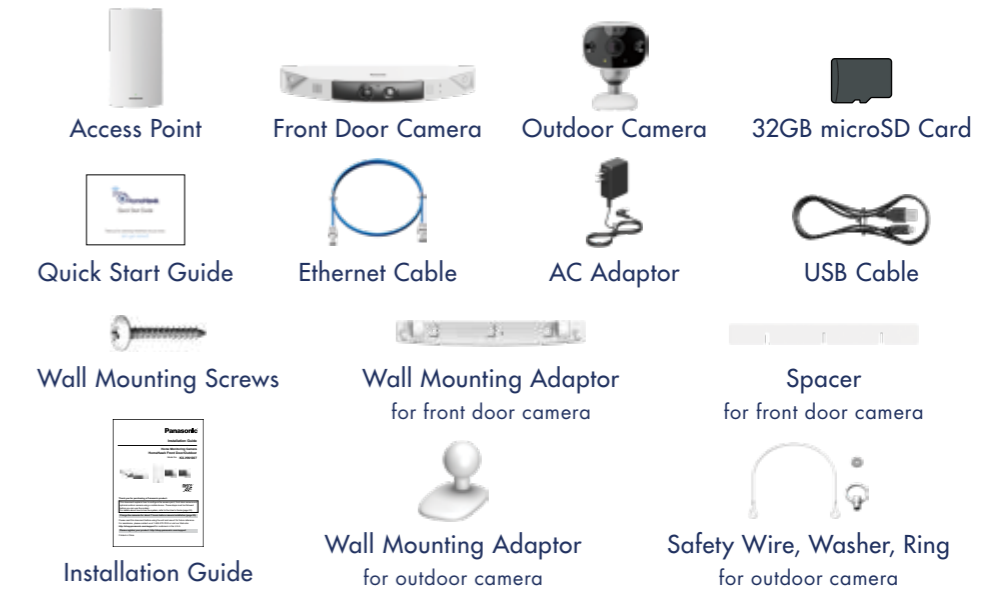
Front Door Camera Panel Location



Outdoor Camera Panel Location



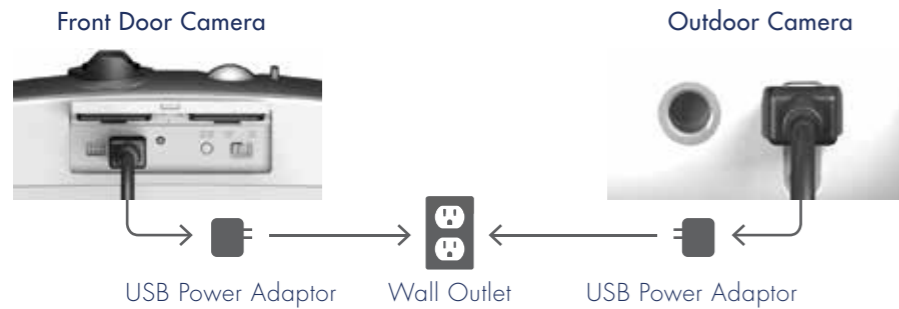
What's Included



1 Charge It Full

Your HomeHawk cameras come **partially charged** for immediate setup and use. However, **we recommend a full 7-hour charge** ASAP to maximize battery life.

Connect the provided **USB cable** into the microUSB connector on the back of each camera and plug other end into a USB power adaptor (not supplied) to a wall outlet.

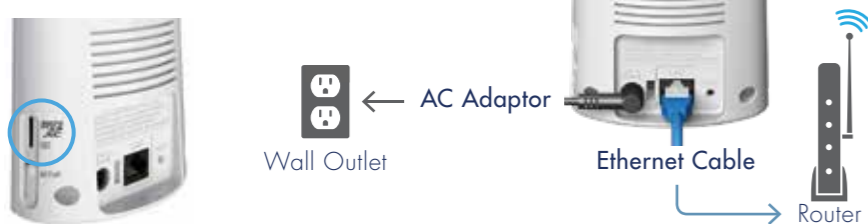


- Charging is complete when the red LED indicator light stops blinking.
- **Make sure camera is "OFF". Battery will take longer to charge if camera is on.**

*Camera battery should last approximately 3 months on a full charge based on 5 minutes daily triggered recording. Actual power level may vary depending use frequency.

2 Plug It In

1. Connect the **ethernet cable** from the back of the **access point** to your home router
2. Connect the **AC adaptor** from the back of the **access point** to a wall outlet
3. Insert the **microSD card** into the unit's microSD card slot



3 Turn It On

Front Door Camera



Outdoor Camera



4 Get The App



Download the HomeHawk app for your smartphone by either:

- Scanning the **QR code**
- Searching for **"Panasonic HomeHawk"** in the app store
- Visiting <https://panasonic.net/cns/pcc/support/homehawk>



Launch the HomeHawk app from your smartphone by tapping the  icon.

Follow on-screen instructions.



Compatible devices: iPhone®, iPad® (iOS 10.0 and later), Android™ 4.1 and later (As of 10/17).

5 Location, Location, Location

Depending on your use, camera function will benefit from proper positioning.

Front Door Camera

- Hanging plants, wind chimes, or items that are easily swayed with the breeze on the sides of the door are more likely to cause false detections.
- Ideal installation height is approx. 7ft. 3in. (2.2m)

Outdoor Camera

- Choose wall and position camera angle so unwanted street/sidewalk movement will be less likely to cause false detections.
- Camera view distance should be within 19ft. 8in. (6m)



Wireless range of each device from the access point is about 328ft (100m).

For more detailed information, tips, and instructions on ideal camera locations, refer to the **Installation Guide**.

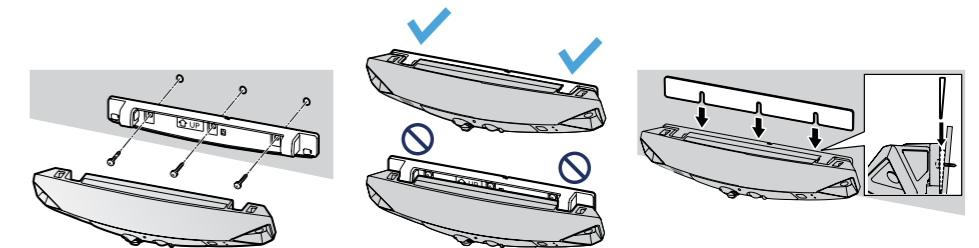
6 Screw It In

Make sure the camera is in the **"ON"** position before installation and all covers are securely closed to assure weatherproof.

- Use the included screws only when installing into siding.
- Do not use the included screws for other wall materials (concrete, mortar, tile, etc.). Use screws and screw anchors specifically designed for the material accordingly.

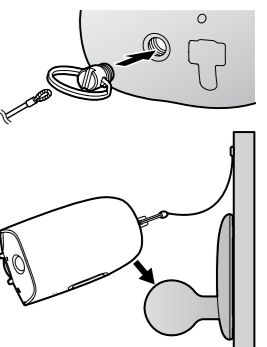
Installing the Front Door Camera

1. Attach the **wall mounting adaptor**
2. Snap the camera onto the bracket with the lens facing at an angle as shown
3. Insert the **spacer** between the adaptor and wall to adjust the viewing angle (if needed)



Installing the Outdoor Camera

1. Thread the **safety ring** to the camera. Attach the **safety wire** to the ring.
2. Screw the wall mounting screws into the wall at 1in. (25.4mm) on center
3. Leave a 1/8" (2.8mm) gap to the wall
4. Mount the **wall mounting adaptor** to the wall
5. Attach the safety wire to the wall
6. Attach camera to the wall mounting adaptor
7. Adjust angle as needed



7 And You're done!

Congratulations! Your HomeHawk home monitoring system is now up and running.