

Operating Instructions 42"/46"/50"/54" Class 1080p Plasma HDTV (41.6/46.0/49.9/54.1 inches measured diagonally)

Manual de instrucciones Televisión de alta definición de 1080p y clase 42"/46"/50"/54" de Plasma (41,6/46,0/49,9/54,1 pulgadas medidas diagonalmente)

Model No.
Número de modelo **TC-P42G10**
TC-P46G10
TC-P50G10
TC-P54G10

Quick Start Guide

(See page 8-18)

Guía de inicio rápido

(vea la página 8-18)



(Image: TC-P50G10)

■ For assistance (U.S.A./Puerto Rico), please call:
1-877-95-VIERA (958-4372)
or visit us at www.panasonic.com/contactinfo

■ For assistance (Canada), please call:
1-866-330-0014
or visit us at www.vieraconcierge.ca

■ Para solicitar ayuda (EE.UU./Puerto Rico), llame al:
1-877-95-VIERA (958-4372)
ó visítenos en www.panasonic.com/contactinfo

Customer's Record

The model number and serial number of this product can be found on its back cover. You should note this serial number in the space provided below and retain this book, plus your purchase receipt, as a permanent record of your purchase to aid in identification in the event of theft or loss, and for Warranty Service purposes.

Model Number _____ Serial Number _____

Anotación del cliente

El modelo y el número de serie de este producto se encuentran en su panel posterior. Deberá anotarlos en el espacio provisto a continuación y guardar este manual, más el recibo de su compra, como prueba permanente de su adquisición, para que le sirva de ayuda al identificarlo en el caso de que le sea sustraído o lo pierda, y también para disponer de los servicios que le ofrece la garantía.

Modelo _____ Número de serie _____

Panasonic Consumer Electronics Company,
Division of Panasonic Corporation of North America
One Panasonic Way, Secaucus
New Jersey 07094 U.S.A.

Panasonic Canada Inc.
5770 Ambler Drive
Mississauga, Ontario
L4W 2T3 CANADA

© 2009 Panasonic Corporation of North America. All Rights Reserved.
© 2009 Panasonic Corporation of North America. Todos los Derechos Reservados.

Printed in U.S.A.
Impreso en EE.UU.

AVCHD™

VIERA CAST™

VIERA Link™

VIERA™
IMAGE VIEWER

HDMI™
HIGH DEFINITION MULTIMEDIA INTERFACE

HDTV

SD
CG™

English

Please read these instructions before operating your set and retain them for future reference.
The images shown in this manual are for illustrative purposes only.

Español

Lea estas instrucciones antes de utilizar su televisor y guárdelas para consultarlas en el futuro.
Las imágenes mostradas en este manual tienen solamente fines ilustrativos.



TQB2AA0808-2

Turn your own living room into a movie theater!
Experience an amazing level of multimedia excitement



(Image: TC-P50G10)

Contents

Please read before using the unit

- Safety Precautions 4
- Notes 7

Quick Start Guide

- Accessories/Optional Accessory 8
- Basic Connection 11
- Identifying Controls 15
- First Time Setup 16

Enjoy your TV!

Basic Features

- Watching TV 19
- Using VIERA TOOLS 21
- Viewing from an SD Card 22
- Watching Videos and DVDs 26
- VIERA CAST™ 28
- Network Camera 30
- Displaying PC Screen on TV 32

Advanced Features

- How to Use Menu Functions (picture, sound quality, etc.) 34
- VIERA Link™ "HDAVI Control™" 38
- Network setting 44
- VIERA CAST setting 46
- Lock 48
- Editing and Setting Channels 50
- Closed Caption 52
- Input Labels/Audio Out 53
- Using Timer 54
- Recommended AV Connections 55

FAQs, etc.

- Ratings List for Lock 56
- Technical Information 57
- Care and Cleaning 61
- FAQ 62
- Specifications 64
- Limited Warranty (for U.S.A. and Puerto Rico only) 66
- Customer Services Directory (for U.S.A. and Puerto Rico) 67
- Limited Warranty (for Canada) 68



<p>VIERA Link™</p> <p>VIERA Link™ is a trademark of Panasonic Corporation.</p>	<p>VIERA CAST™</p> <p>VIERA CAST™ is a trademark of Panasonic Corporation.</p>	<p>SD</p> <p>SDHC Logo is a trademark.</p>
<p>HDMI™</p> <p>HDMI, the HDMI logo and High-Definition Multimedia Interface are trademarks or registered trademarks of HDMI Licensing LLC.</p>	<p>Manufactured under license from Dolby Laboratories. Dolby and the double-D symbol are trademarks of Dolby Laboratories.</p>	

This product qualifies for ENERGY STAR in the "Home Use" setting and this is the setting in which energy savings will be achieved. Any modifications to the "Home Use" setting or other factory default settings could result in greater energy consumption beyond levels that meet ENERGY STAR qualifications.

HDAVI Control™ is a trademark of Panasonic Corporation.

www.CEA.org/safety

Safety Precautions



CAUTION

RISK OF ELECTRIC SHOCK

DO NOT OPEN



WARNING: To reduce the risk of electric shock, do not remove cover or back. No user-serviceable parts inside. Refer servicing to qualified service personnel.

The lightning flash with arrowhead within a triangle is intended to tell the user that parts inside the product are a risk of electric shock to persons.

The exclamation point within a triangle is intended to tell the user that important operating and servicing instructions are in the papers with the appliance.

WARNING: To reduce the risk of fire or electric shock, do not expose this apparatus to rain or moisture. Do not place liquid containers (flower vase, cups, cosmetics, etc.) above the set (including on shelves above, etc.).

Important Safety Instructions

- 1) Read these instructions.
- 2) Keep these instructions.
- 3) Heed all warnings.
- 4) Follow all instructions.
- 5) Do not use this apparatus near water.
- 6) Clean only with dry cloth.
- 7) Do not block any ventilation openings. Install in accordance with the manufacturer's instructions.
- 8) Do not install near any heat sources such as radiators, heat registers, stoves, or other apparatus (including amplifiers) that produce heat.
- 9) Do not defeat the safety purpose of the polarized or grounding-type plug. A polarized plug has two blades with one wider than the other. A grounding type plug has two blades and a third grounding prong. The wide blade or the third prong are provided for your safety. If the provided plug does not fit into your outlet, consult an electrician for replacement of the obsolete outlet.
- 10) Protect the power cord from being walked on or pinched particularly at plugs, convenience receptacles, and the point where they exit from the apparatus.
- 11) Only use attachments / accessories specified by the manufacturer.
- 12) Use only with the cart, stand, tripod, bracket, or table specified by the manufacturer, or sold with the apparatus. When a cart is used, use caution when moving the cart / apparatus combination to avoid injury from tip-over.
- 13) Unplug this apparatus during lightning storms or when unused for long periods of time.
- 14) Refer all servicing to qualified service personnel. Servicing is required when the apparatus has been damaged in any way, such as power-supply cord or plug is damaged, liquid has been spilled or objects have fallen into the apparatus, the apparatus has been exposed to rain or moisture, does not operate normally, or has been dropped.
- 15) To prevent electric shock, ensure the grounding pin on the AC cord power plug is securely connected.



FCC STATEMENT

This equipment has been tested and found to comply with the limits for a Class B digital device, pursuant to Part 15 of the FCC Rules. These limits are designed to provide reasonable protection against harmful interference in a residential installation. This equipment generates, uses and can radiate radio frequency energy and, if not installed and used in accordance with the instructions, may cause harmful interference to radio communications. However, there is no guarantee that interference will not occur in a particular installation. If this equipment does cause harmful interference to radio or television reception, which can be determined by turning the equipment off and on, the user is encouraged to try to correct the interference by one or more of the following measures:

- Reorient or relocate the receiving antenna.
- Increase the separation between the equipment and receiver.
- Connect the equipment into an outlet on a circuit different from that to which the receiver is connected.
- Consult the dealer or an experienced radio/TV technician for help.

This device complies with Part 15 of the FCC Rules. Operation is subject to the following two conditions: (1) This device may not cause harmful interference, and (2) this device must accept any interference received, including interference that may cause undesired operation.

FCC Caution:
To assure continued compliance, follow the attached installation instructions and use only shielded interface cables when connecting to computer or peripheral devices. Any changes or modifications not expressly approved by Panasonic Corp. of North America could void the user's authority to operate this device.

FCC Declaration of Conformity
Model No. TC-P42G10, TC-P46G10, TC-P50G10, TC-P54G10

Responsible Party: Panasonic Corporation of North America
 One Panasonic Way, Secaucus, NJ 07094
 Contact Source: Panasonic Consumer Electronics Company
 1-877-95-VIERA (958-4372)
 email: consumerproducts@panasonic.com

CANADIAN NOTICE:
 For Model TC-P42G10, TC-P46G10, TC-P50G10, TC-P54G10
 This Class B digital apparatus complies with Canadian ICES-003.

WARNING/CAUTION

⚠ WARNING

Small parts can present choking hazard if accidentally swallowed. Keep small parts away from young children. Discard unneeded small parts and other objects, including packaging materials and plastic bags/sheets to prevent them from being played with by young children, creating the potential risk of suffocation.

Set up
 This Plasma TV may fall and can cause personal injury or even death if not installed correctly. To prevent personal injury or death, follow these warnings:

- **Install the Plasma TV in accordance with the manufacturer's recommended pedestal or stand, corresponding hardware and installation instructions.** This Plasma TV is for use only with the following optional accessories. Use with any other type of optional accessories may cause instability. The following accessories are manufactured by Panasonic Corporation.
 - Wall-hanging bracket (Angled)
 TY-WK4P1RW (TC-P42G10, TC-P46G10, TC-P50G10)
 - TY-WK5P1RW (TC-P54G10)

● **Be sure to ask a qualified technician to carry out the installation and set-up.**
 Two or more people are required to install or remove the television.

- **Some wall mounts (wall-hanging brackets) are not designed to be mounted to walls with steel studs or old cinder block constructions.** Ask your dealer or licensed contractor to properly secure the wall-hanging bracket.

● **Do not place the Plasma TV or its stand on a sloped or unstable surface.**
 The Plasma TV may fall or tip over.

● **Do not support the Plasma TV on a non-specified pedestal.**

● **Do not place the Plasma TV on furniture that can easily be used as steps, such as a chest of drawers.**

● **Do not climb or allow children to climb on the Plasma TV**

● **Place or install the Plasma TV where it cannot be pushed, pulled over or knocked down.**

● **Route all cords and cables such that they cannot be tripped over or pulled by curious children.**

● **Do not place any objects on top of the Plasma TV.**
 If water spills onto the Plasma TV or foreign objects get inside it, a short-circuit may occur which could result in fire or electric shock. If any foreign objects get inside the Plasma TV, please consult an Authorized Service Center.

AC Power Supply Cord
To prevent fire or electric shock:

- **The Plasma TV is designed to operate on a 120 V AC, 60 Hz service. Insert the power cord plug as far as it will go into the wall socket.** If the plug is not fully inserted, heat may generate, which could cause a fire.
- **The included power cord is for use with this unit only.**
- **Do not use any power cord other than that provided with this TV.**
- **Do not handle the power cord plug with wet hands.**
- **Do not do anything that might damage the power supply cord.**

- **When disconnecting the power supply cord, hold the plug, not the cord.**
- **Do not use the power supply cord if the plug or cord is damaged.**
 Replace the cord or contact your Authorized Service Center

■ Handling the power supply cord

- **Insert the power plug fully into the socket outlet. (If the power plug is loose, it could generate heat and cause fire.)**
- **Ensure that the power plug is easily accessible.**
- **Ensure the earth pin on the power plug is securely connected to prevent electrical shock.**
 - An apparatus with CLASS I construction shall be connected to a power socket outlet with a protective earthing connection.
- **Do not touch the power plug with a wet hand. (This may cause electrical shock.)**
- **Do not use any power cord other than that provided with this TV. (This may cause fire or electrical shock.)**
- **Do not damage the power cord. (A damaged cord may cause fire or electrical shock.)**
 - Do not move the TV with the cord plugged in the socket outlet.
 - Do not place a heavy object on the cord or place the cord near a high-temperature object.
 - Do not twist the cord, bend it excessively, or stretch it.
 - Do not pull on the cord. Hold onto the power plug body when disconnecting cord.
 - Do not use a damaged power plug or socket outlet.

■ If Problems Occur During Use

- **If a problem occurs (such as no picture or no sound), or if smoke or an abnormal odor is detected from the Plasma TV, unplug the power supply cord immediately.** Continued use of the TV under these conditions might cause a fire or permanent damage to the TV. Have the TV evaluated by an Authorized Service Center. Servicing of the TV by unauthorized personnel is strongly discouraged due to its high voltage.
- **If water or an object gets inside the Plasma TV, if the Plasma TV is dropped, or if the enclosure becomes damaged, unplug the power supply cord immediately.** A short-circuit may occur, which could cause a fire. Contact an Authorized Service Center for an evaluation.

⚠ CAUTION

- **Do not cover the ventilation holes.**
 Doing so may cause the Plasma TV to overheat, which can cause a fire or damage to the Plasma TV.
- **Leave a space of 3 15/16" (10 cm) or more at the top, left and right, and 2 3/4" (7 cm) or more at the rear.**
- **When using the pedestal, keep the space between the bottom of the TV and the pedestal or stand surface clear from objects that may obstruct ventilation.**

■ When Moving the Plasma TV

- **Be sure to disconnect all cables before moving the Plasma TV.**
 Moving the TV with its cables attached might damage the cables which, in turn, can cause fire or electric shock
- **To prevent an electric shock, disconnect the power plug from the wall outlet as a safety precaution before carrying out any cleaning.**

Safety Precautions (Continued)

- **Transport only in upright position**

Transporting the unit with its display panel facing upright or downward may cause damage to the internal circuitry.

- **Using a dry cloth, clean any dust from the power supply cord and plug regularly.**

Build-up of dust on the power cord plug can increase humidity, which might damage the insulation and cause a fire.

- **This Plasma TV radiates infrared rays;**

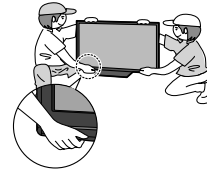
therefore, it may affect other infrared communication equipment. Install your infrared sensor in a place away from direct or reflected light from your Plasma TV.

- **The TV will still consume some power as long as the power supply cord is connected to the wall outlet.**

- **Display panel is made of glass. Do not apply strong force or impact to the display panel.**

This may cause damage resulting in injury.

- **The TV is heavy. TV should be handled by 2 or more people. Support as shown to avoid injury by the TV tipping or falling.**



⚠ WARNING

CEA CHILD SAFETY NOTICES: Flat panel displays are not always supported on the proper stands or installed according to the manufacturer's recommendations. Flat panel displays that are inappropriately situated on dressers, bookcases, shelves, desks, speakers, chests or carts may fall over and may cause personal injury or even death.

The consumer electronics industry (of which Panasonic is a member) is committed to making home entertainment enjoyable and safe. To prevent personal injury or death, be sure to follow the following safety guidelines:

TUNE INTO SAFETY:

- One size does NOT fit all. Follow the manufacturer's recommendations for the safe installation and use of your flat panel display.
- Carefully read and understand all enclosed instructions for proper use of this product.
- Don't allow children to climb on or play with furniture and television sets.
- Don't place flat panel displays on furniture that can easily be used as steps, such as a chest of drawers.
- Remember that children can become excited while watching a program, especially on "larger than life" flat panel displays. Care should be taken to install the display where it cannot be pushed, pulled over, or knocked down.
- Care should be taken to route all cords and cables connected to the flat panel display so that they cannot be pulled or grabbed by curious children.

WALL MOUNTING: IF YOU DECIDE TO WALL MOUNT YOUR FLAT PANEL DISPLAY, ALWAYS:

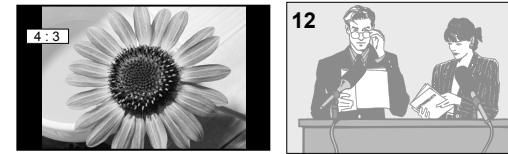
- Use a mount that has been recommended by the display manufacturer and/or listed by an independent laboratory (such as UL, CSA, ETL).
- Follow all instructions supplied by the display and wall mount manufacturers.
- If you have any doubts about your ability to safely install your flat panel display, contact your retailer about professional installation.
- Make sure the wall where you are mounting the display is appropriate. Some wall mounts are not designed to be mounted to walls with steel studs or old cinder block construction. If you are unsure, contact a professional installer.
- A minimum of two people are required for installation. Flat panel displays can be heavy.

Panasonic recommends that a qualified installer perform the wall-mount installation. See page 5.

Notes

- **Do not display a still picture for a long time**

This causes the image to remain on the plasma screen ("Image retention"). This is not considered a malfunction and is not covered by the warranty.



To prevent "Image retention", the screen saver is automatically activated after a few minutes if no signals are sent or no operations are performed. (p. 63)

Typical still images

- Channel number and other logos
- Image displayed in 4:3 mode
- SD Card photo
- Video game
- Computer image

- **Set up**

- Do not place the unit where it's exposed to sunlight or other bright light (including reflections).
- Use of some types of fluorescent lighting may reduce the remote control's transmission range.

Accessories/Optional Accessory

Accessories

✓ Check you have all the items shown.

Accessories

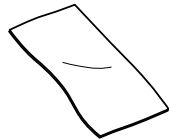
- Remote Control Transmitter
 - N2QAYB000322



- Batteries for the Remote Control Transmitter (2)
 - AA Battery



- Cleaning cloth

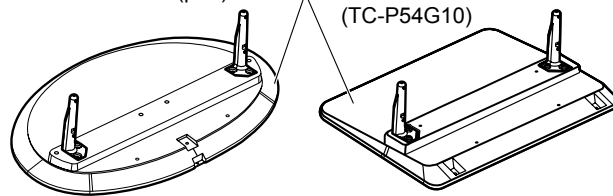


- AC cord



- Pedestal
 - TBLX0091 (TC-P42G10)
 - TBLX0092 (TC-P46G10, TC-P50G10)

How to assemble (p. 9)



- TBLX0102 (TC-P54G10)

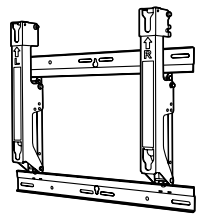
- Operating Instructions

- Product Registration Card (U.S.A.)

- Viera Concierge and basic instruction for HDTV

- Customer Care Plan Card (U.S.A.)

Optional Accessory



Wall-hanging bracket (angle)

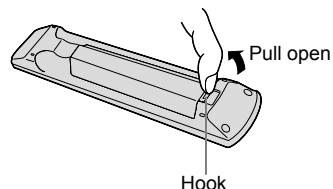
- TY-WK4P1RW (for 42"/46"/50")
- TY-WK5P1RW (for 54")

Note

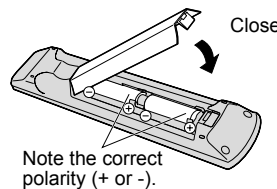
- In order to maintain the TV's performance and safety, be absolutely sure to ask your dealer or a licensed contractor to secure the wall-hanging brackets.
- Carefully read the instructions accompanying the plasma TV stand or pedestal, and be absolutely sure to take steps to prevent the TV from tipping over.
- Handle the TV carefully during installation since subjecting it to impact or other forces may cause its panel to crack.

Installing the remote's batteries

1



2



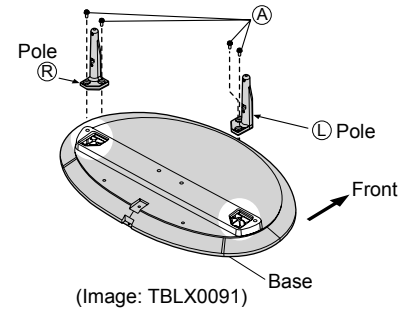
Caution

- Incorrect installation may cause battery leakage and corrosion, resulting in damage to the remote control.
 - Do not mix old and new batteries.
 - Do not mix different battery types (such as alkaline and manganese batteries).
 - Do not use rechargeable (Ni-Cd) batteries.
- Do not burn or break batteries.

Attaching the pedestal to TV

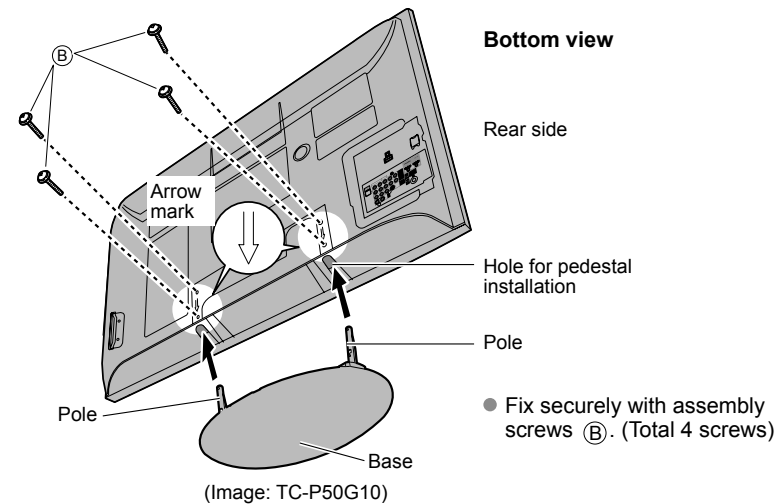
Assembling the pedestal

- Fix securely with assembly screws (A). (Total 4 screws)
- Tighten screws firmly.



Set-up

- Carry out work on a horizontal and level surface.
- Tighten screws firmly.

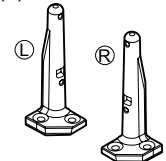


Accessories

Assembly screws (4 of each)

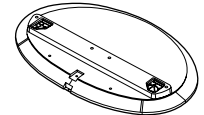
- (A) (for 42"/46"/50")
M5 × 18 (Silver)
- (for 54")
M5 × 25 (Silver)
- (B) (for 42"/46"/50")
M5 × 25 (Black)
- (for 54")
M5 × 30 (Black)

Poles (2)

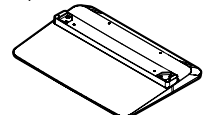


- L or R is printed at the bottom of the poles.

Base (1)
(for 42"/46"/50")



(for 54")



Warning

Do not disassemble or modify the pedestal.

- Otherwise the TV may fall over and become damaged, and personal injury may result.

Caution

Do not use any other TV and displays.

- Otherwise the TV may fall over and become damaged, and personal injury may result.

Do not use the pedestal if it becomes warped or physically damaged.

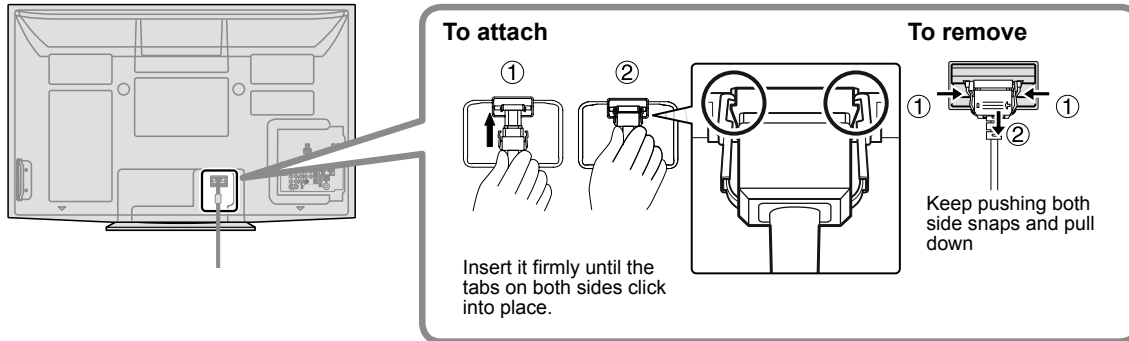
- If you use the pedestal when it is physically damaged, personal injury may result. Contact your nearest Panasonic Dealer immediately.

During set-up, make sure that all screws are securely tightened.

- If sufficient care is not taken to ensure screws are properly tightened during assembly, the pedestal will not be strong enough to support the TV, and it might fall over and become damaged, and personal injury may result.

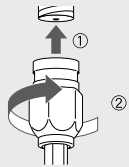
Accessories/Optional Accessory (Continued)

AC cord connection



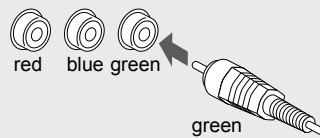
Reference of connection

Antenna terminal



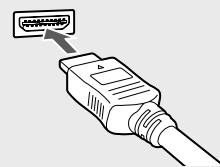
- Firmly tighten by hand.

Pin terminals



- Match colors of plugs and terminals.
- Insert firmly.

HDMI terminal

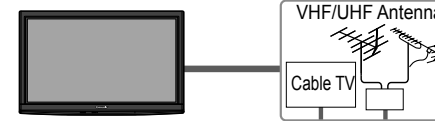


- Insert firmly.

Basic Connection

Example 1 Connecting Antenna (To watch TV)

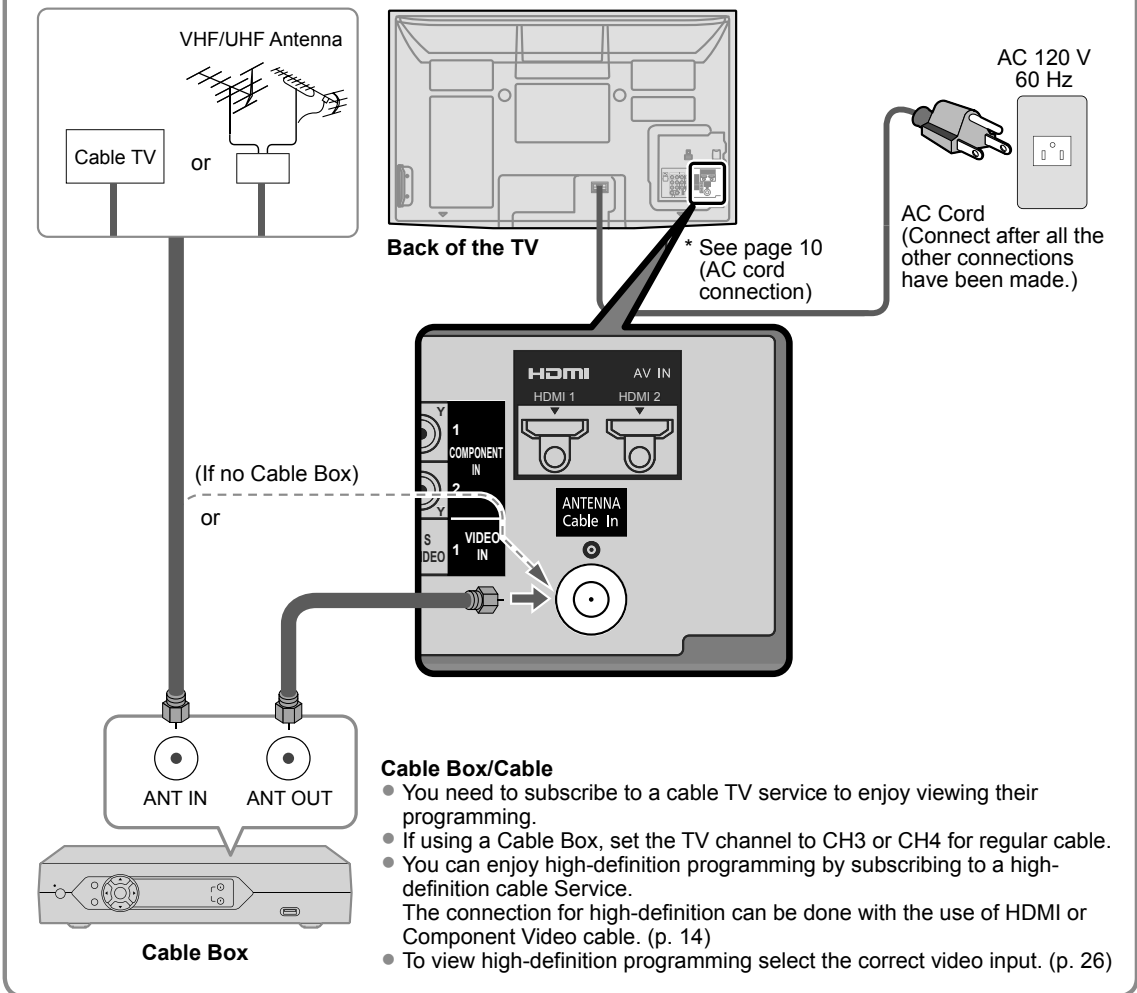
TV



VHF/UHF Antenna

- NTSC (National Television System Committee): Conventional broadcasting
- ATSC (Advanced Television Systems Committee): Digital TV Standards include digital high-definition television (HDTV), standard-definition television (SDTV), data broadcasting, multi-channel surround-sound audio and interactive television.

To connect the antenna terminal and Cable Box



Note

- Not all cables and external equipment shown in this book are supplied with the TV.
- For more details on the external equipment's connections, please refer to the operating manuals for the equipment.
- When disconnecting the power cord, be absolutely sure to disconnect the power cord plug from the wall outlet first.
- For additional assistance, visit us at: www.panasonic.com
www.panasonic.ca

Basic Connection (Continued)

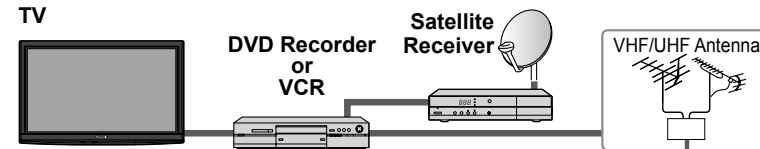
Example 2 Connecting DVD recorder (VCR) (To record/playback)



DVD Recorder
If the source has a higher resolution signal (480p/720p/1080i/1080p), connection can be made with the use of a Component Video or HDMI cable. (p. 14)

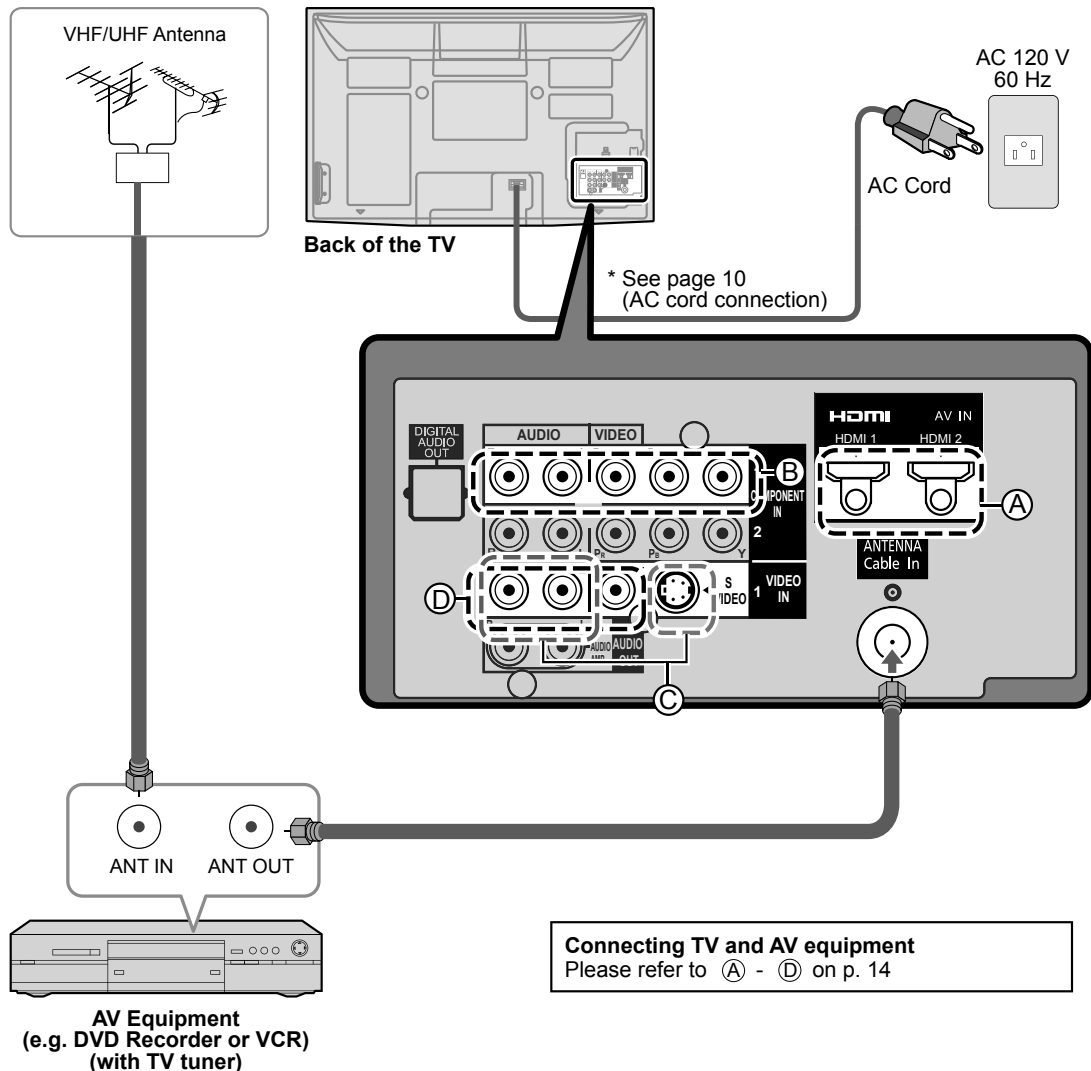
VCR
Connection can be made with the use of an RF cable and Composite Video/S Video cable. (p. 14)

Example 3 Connecting DVD recorder (VCR) and satellite receiver

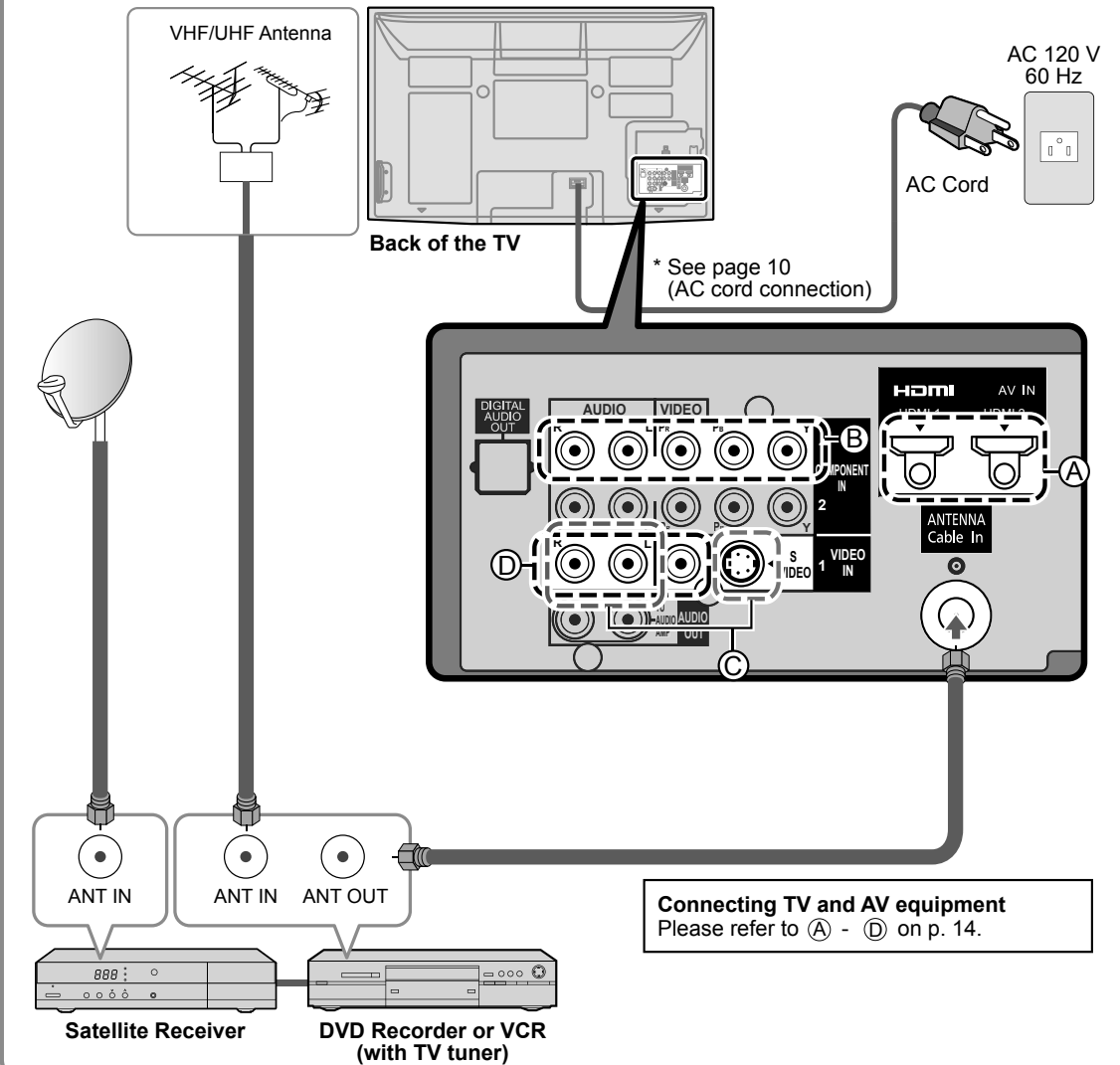


You can enjoy high-definition programming by subscribing to high-definition satellite service. Connection can be done with the use of HDMI or Component Video cable. (p. 14)

To connect the antenna terminal and DVD recorder or VCR



To connect the antenna terminal and Satellite Receiver and DVD recorder or VCR



Note

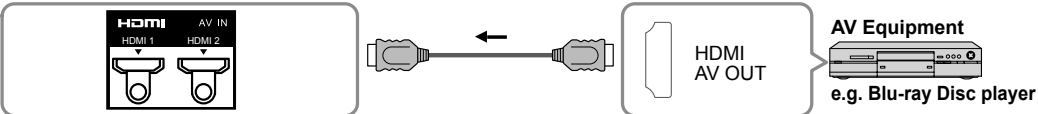
● For details of external equipment connections, please refer to the operating manuals for the equipment.

Basic Connection (Continued)

AV cable connections

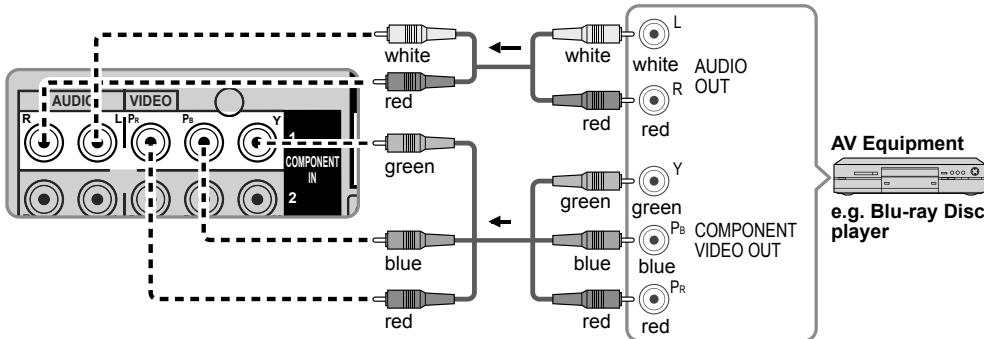
High-Definition

A To use HDMI terminals



- Connecting to HDMI terminals will enable you to enjoy high-definition digital images and high-quality sound.
- The HDMI connection is required for a 1080p signal.
- For "VIERA Link™ connections", please refer to p. 39.

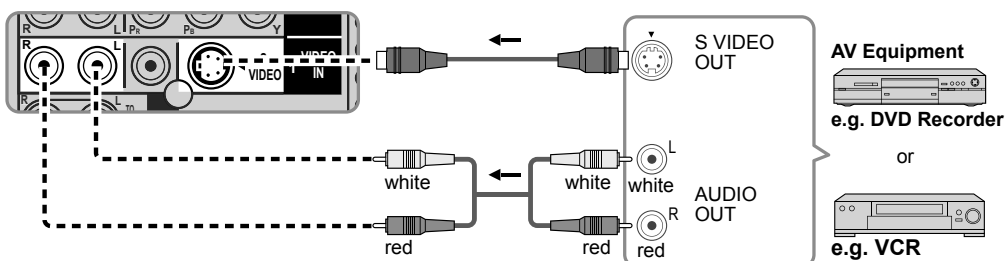
B To use COMPONENT terminals



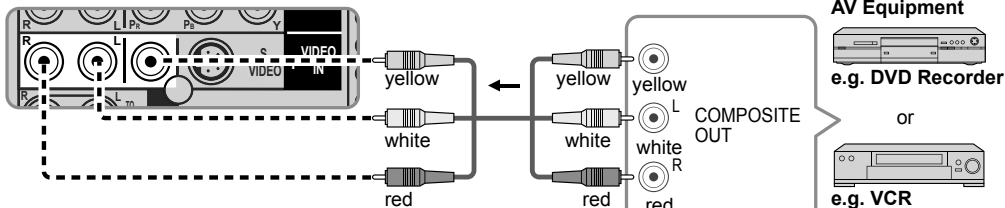
- Recorders may also be connected to COMPOSITE or S VIDEO terminals. (see below)

Standard-Definition

C To use S VIDEO terminals



D To use COMPOSITE terminals



- The S Video input will override the composite video signal when S Video cable is connected. Connect either S Video or Video cable.
- Connecting to S VIDEO terminals will enable you to enjoy greater picture quality than using Composite terminals.

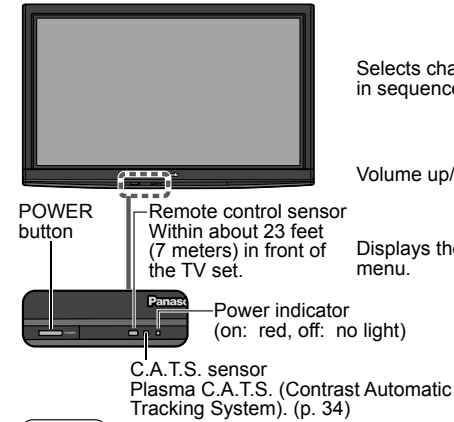
Note

- Some programs contain a copyright protection signal to prevent recording.
- When the copyright protection program is displayed, do not connect the other TV monitor through a VCR. Video signals fed through VCRs may be affected by copyright protection systems and the picture will be distorted on the other TV monitor.
- For more details on the external equipment's connections, please refer to the operating manuals for the equipment.

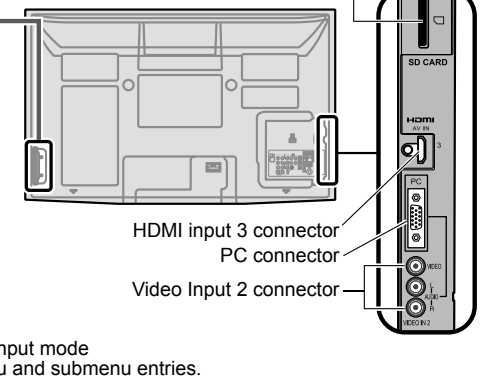
Identifying Controls

TV controls/indicators

Front of the TV



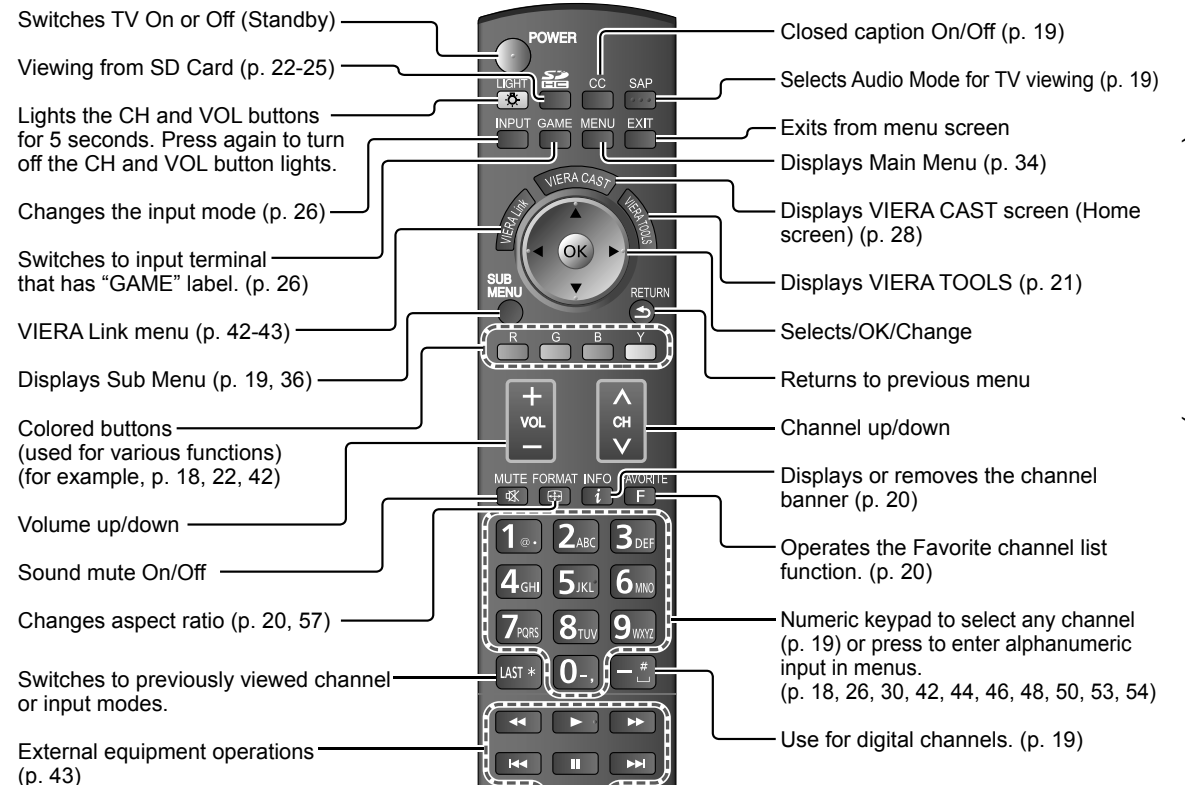
Back of the TV



Note

- The TV consumes a limited amount of power as long as the power cord is inserted into the wall outlet.
- Do not place any objects between the TV remote control sensor and remote control.

Remote control



Quick Start Guide

● Identifying Controls
● Basic Connection (AV cable connections)

First Time Setup

“First time setup” is displayed only when the TV is turned on for the first time after the power cord is inserted into a wall outlet and when “Auto power on” (p. 36-37) is set to “No”.



1 Turn the TV On with the POWER button

POWER (TV) or POWER (Remote)

* This setting will be skipped next time if you select “Home Use”.

① Select your language

Language: English, Español, Français. ①select, ②ok

② Be sure to select “Home Use”

Please select your viewing environment: Home Use, Store Demonstration. Select “Home Use” when using this TV in your home. ①select, ②ok

● Please confirm your selection (Home Use) before pressing OK button.

■ If you select “Store Demonstration” by mistake in ②, confirmation screen will be displayed.

You are selecting the mode for store demonstration: Yes, No. ①select, ②ok

● Select “No” and return to previous screen ②.
● If you select “Yes”, Screen enters store demonstration mode.

To display the “Please select your viewing environment” screen again as shown above and select “Home Use”, do one of the following:

- Press and hold down the front POWER button.
- Unplug the TV and plug it again.

2 Auto channel setup

① Select “ANT/Cable setup”

First time setup: Language, ANT/Cable setup, Network setting, VIERA CAST setting, Clock, Input labels. ②next, ①select

② Select “ANT in”

ANT/Cable setup: ANT in, Cable. ②set, ①select

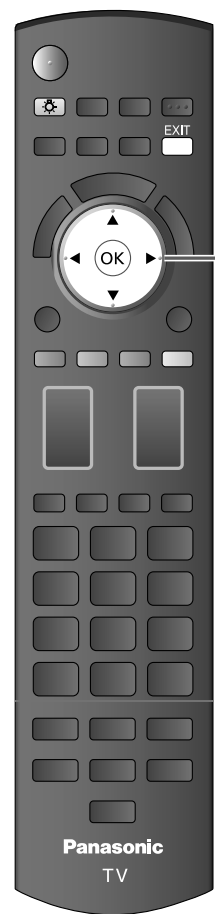
ANT in
Cable: Cable TV
Antenna: Antenna
Not used: Skip TV tuning
→ go to ③

Select “Not used” when no wire is connected to the “Antenna/Cable” terminal.

- Typical when Cable/Satellite box is connected to a TV input.
- Prevents accidental tuning to an unavailable signal.

■ Press to exit from a menu screen
EXIT

■ Press to return to the previous screen
RETURN



2 Select “Auto program”

ANT/Cable setup: ANT in, Cable. Auto program. ②next, ①select

④ Select scanning mode (ALL channels/Analog only/Digital only)

Auto program: All channels, Analog only, Digital only. ②ok, ①select

Auto program: Progress 8%, Number of analog channels 10, Number of digital channels 0. Press RETURN to quit. RETURN

Start scanning the channels

- Available channels (analog/digital) are automatically set.

All channels: Scans digital and analog channels
Analog only: Scans Analog channels only
Digital only: Scans Digital channels only

⑤ Confirm registered channels

program: Apply, Cancel. Caption, Favorite, Add. Yes, Yes, Yes. ①select “Apply”, ②ok

- If OK is not pressed after selecting “Apply”, the channels will not be saved. The channel will be saved when no operation is performed for 60 seconds and the “Manual program” menu will also exit automatically.
- If you perform scanning more than twice, previously saved channels are erased.

3 Network setting

First time setup: Language, ANT/Cable setup, Network setting, VIERA CAST setting, Clock, Input labels. ①select, ②ok

Network setting (p. 44-45)

■ Press to exit from a menu screen
EXIT

Note

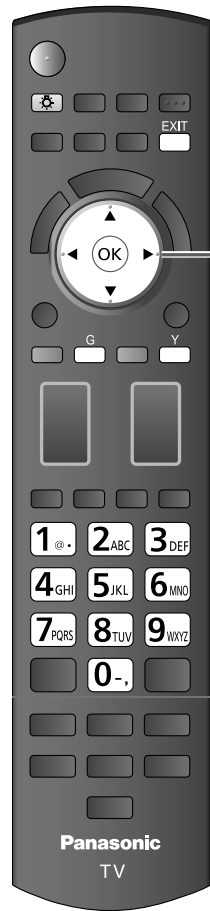
- To change setting (Language/ANT/Cable setup/Network setting/VIERA CAST setting/Clock/Input labels) later, go to Menu screen (p. 36)

4 VIERA CAST setting

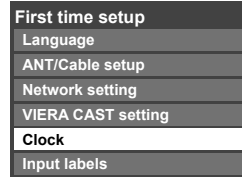
First time setup: Language, ANT/Cable setup, Network setting, VIERA CAST setting, Clock, Input labels. ①select, ②ok

VIERA CAST setting (p. 46-47)

First Time Setup (Continued)



5 Adjust the clock

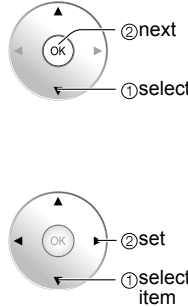


1 Manual setting

Mode	Manual
Year	2009
Month	1
Day	7
Hour	10 AM
Minute	10
Time zone	NST
DST	Off

2 Auto setting

Clock	2009/ 6/11 8:07AM
Mode	Auto
Year	2009
Timezone	Est
DST	On



Mode
Manual: Adjust the clock manually (Year/Month/Day/Hour/Minute)
Auto: The clock is adjusted automatically via Internet service. Only available when the TV is on a network. → Set "Network setting" and "VIERA CAST setting" first. (Time zone/DST)

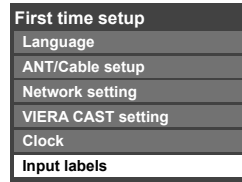
Year Select the year
Month Select the month
Day Select the day
Hour Adjust the hour
Minute Adjust the minute

Time zone
 Select your time zone. (EST/CST/MST/PST/AKST/HST/NST/AST)

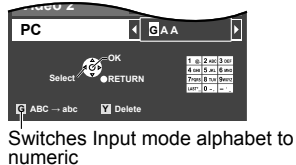
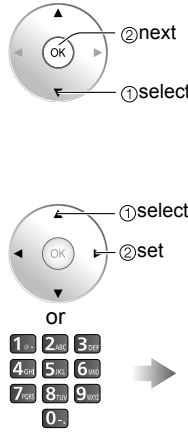
DST Set DST (Daylight Saving Time) setting. (On/Off)

On: Advances the clock one hour from the time is set according to the time zone.

6 Set the Input labels



Component 1	
Component 2	
HDMI 1	
HDMI 2	
HDMI 3	GAME
Video 1	
Video 2	
PC	



Switches Input mode alphabet to numeric

Label: [BLANK] SKIP/VCR/DVD/CABLE/SATELLITE/DVR/GAME/AUX/RECEIVER/COMPUTER/Blu-ray/CAMERA/DVD REC/HOME THTR/MONITOR/MEDIA CTR/MEDIA EXT/OTHER

■ Press to exit from a menu screen

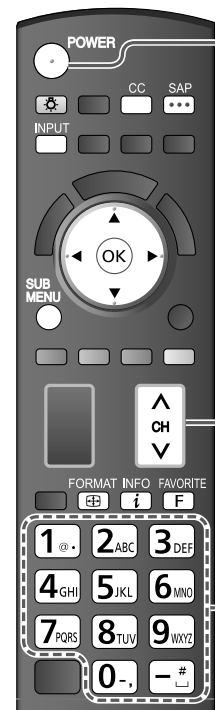
Note

- About broadcasting systems
- Analog (NTSC):** Conventional broadcasting
- Digital (ATSC):** New programming that allows you to view more channels featuring high-quality video and sound

Watching TV

Connect the TV to a cable box/cable, set-top-box, satellite box or antenna cable (p. 11-14)

To watch TV and other functions



1 Turn power on
 POWER or (TV)

2 Select a channel number
 or (TV)

Note

- Reselect "Cable" or "Antenna" in "ANT in" of "ANT/Cable setup" to switch the signal reception between cable TV and antenna. (p. 16, 51)
- The channel number and volume level remain the same even after the TV is turned off.

Note

- If the mode is not TV, press and select TV. (p. 26)

■ To directly input the digital channel number

When tuning to a digital channel, press the button to enter the minor number in a compound channel number.

example: CH15-1:

Listen with SAP (Secondary Audio Program)

SAP

- Digital mode**
Press SAP to select the next audio track (if available) when receiving a digital channel.
 Audio track 1 of 2 (English)
- Analog mode**
Press SAP to select the desired audio mode.
 • Each press of SAP will change the audio mode. (Stereo/SAP/Mono)

Closed caption

CC

Closed caption On ↔ Closed caption Off

Display the SUB MENU

SUB MENU


Setup SUB MENU
 Channel surf mode
 All
 Set favorite
 Edit CH caption
 Signal meter

Watching TV (Continued)

Other Useful Functions (Operate after ②)

Information Recall


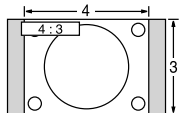
■ **Displays or removes the channel banner.**



Channel	15-2	THE NEWS	12:30 PM
Station identifier	ABC-HD	CC SAP	TV-G
Closed caption	SAP indication	Rating Level	Aspect ratio
	1080i	Standard	4:3
	Signal resolution	Picture mode	Sleep timer remaining time
			30

Change aspect ratio

■ **Press FORMAT to cycle through the aspect modes.** (p. 57)

- 480i, 480p: FULL/JUST/4:3/ZOOM
- 1080p, 1080i, 720p: FULL/H-FILL/JUST/4:3/ZOOM

Call up a favorite channel

■ **FAVORITE**

Channel numbers registered in Favorite are displayed on the favorite tune screen. Select the desired broadcast station with the cursor or use number buttons. (see below)

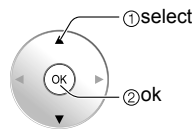
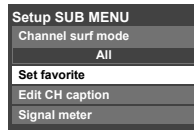
Favorite Feature

Set Favorite Feature

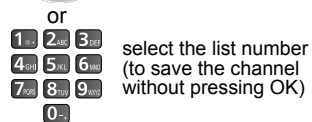
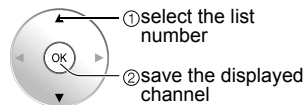
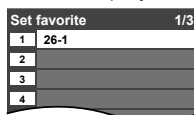
1 Display the SUB MENU.



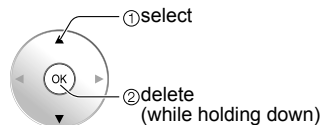
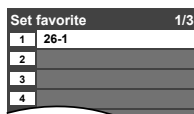
2 Select "Set favorite"



3 Set the displayed channel



Delete a favorite channel

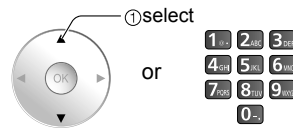
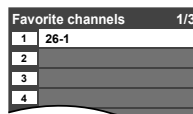


Use Favorite Feature

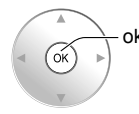
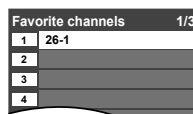
1 Display "Favorite channels"



2 Select the channel



3 Set Favorite channel



To change the page



Press repeatedly to change between pages(1/3, 2/3, 3/3 or exit)

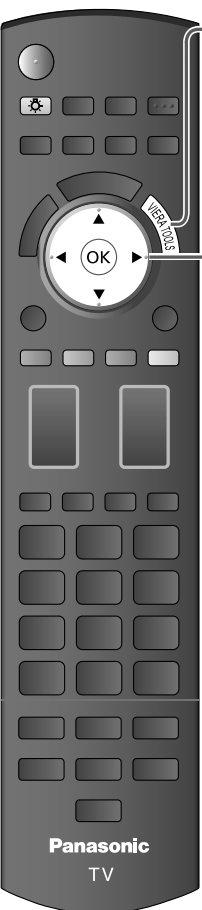


Changes the page forward/backward


Using VIERA TOOLS

VIERA TOOLS is the easy way to access high use menu items. They are displayed as shortcut icons on the TV screen.


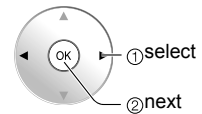
Unlike a conventional menu, you can enjoy using, playing or setting a function quickly.









1 Display VIERA TOOLS



2 Select the item

	Displayed "THX setting" menu. (P.59) Select Picture mode setting. (THX/Standard (Vivid/Game/Custom))
	Start "VIERA CAST". (p. 28)
	Displayed "VIERA Link control" menu. Select the equipment you want to access. ● VIERA Link control only with the TV's remote control (p. 42-43)
	Start Network Camera viewing (p. 30-31)
	Displayed "SD card" menu. Select SD card function. (Slideshow/Thumbnail/Movie) ● Viewing from an SD card (p. 22-25)
	Displayed "ECO/energy saving" menu. (p. 36)

Press to exit from a menu screen



Press to return to the previous screen



Viewing from an SD Card

You can view movies and photos taken with a digital camera or digital video camera and saved on an SD card. (Media other than SD Cards may not be reproduced properly.)

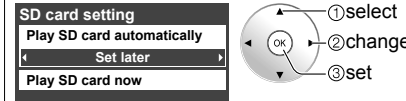
Movie player



1

Insert the SD card

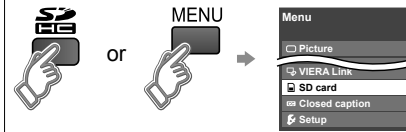
* This setting will be skipped next time unless you select "Set later".
Set "SD card setting" and select "Play SD card now"
 • "SD card setting" will be displayed automatically each time an SD card is inserted for the first time.



Slideshow: A Slideshow will start automatically next time.
Thumbnail: The Photo viewer menu will be displayed automatically next time.
Movie: The video data plays automatically from next time.
Set later: "SD card setting" menu will be displayed repeatedly.
Off: The data can be played manually.

Manual operation ("Play SD card automatically" is "Off")

1 Display "SD card"



• Using VIERA TOOLS (p. 21)

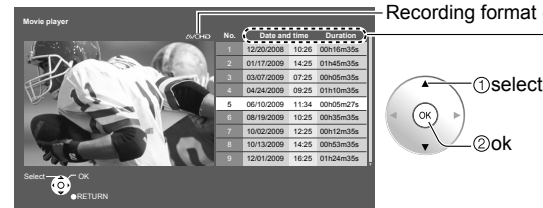
2 Select the item



Photo viewer → Go to P. 24 2

2

Select the movie to be listed



Recording format (MPEG2/AVCHD)
 Movie information
Date and time: Date and time of recording are displayed.
Duration: Recording time is displayed.

3

View



Navigation area
 • To display Navigation area → R G B Y / OK
 • To hide Navigation area → RETURN
 • To previous movie → R
 • To next movie → G

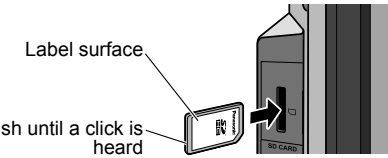
■ Press to exit from a menu screen
 EXIT

■ Press to return to the previous screen
 RETURN

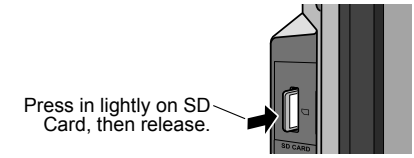
RETURN

SD Card

• Insert the card



• Remove the card

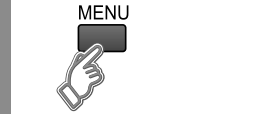


• Compliant card type (maximum capacity): SDHC Card (16 GB), SD Card (2 GB), miniSD Card (1 GB) (requiring miniSD Card adapter)
 • For cautions and details on SD Cards (p. 58)

Movie settings

In 2 or 3

1 Display "Movie settings"

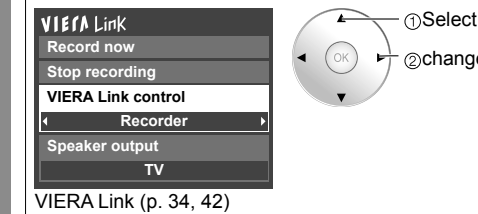


2 Select the item



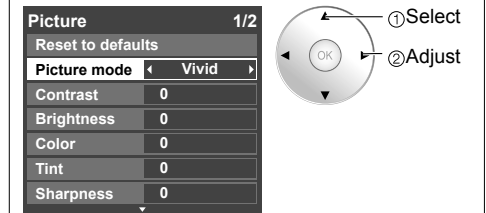
3 Set

Use VIERA Link function



VIERA Link (p. 34, 42)

Adjust the picture and Audio



example: Picture menu
 Picture menu/Audio menu
 (p. 34)

Set up Repeat playback



Repeat Turn the Movie play Repeat function On or Off.

Change Audio current status

In 3

1 Display "current audio status"



2 Each press of SAP will change the audio mode. (If the movie has multiple audio signals.)



(Current audio status)

• It may take several seconds to change the sound.

This product is licensed under the AVC patent portfolio license for the personal and non-commercial use of a consumer to (i) encode video in compliance with the AVC Standard ("AVC Video") and/or (ii) decode AVC Video that was encoded by a consumer engaged in a personal and non-commercial activity and/or was obtained from a video provider licensed to provide AVC Video. No license is granted or shall be implied for any other use. Additional information may be obtained from MPEG LA, LLC. See <http://www.mpegla.com>.

Viewing from an SD Card

(Continued)

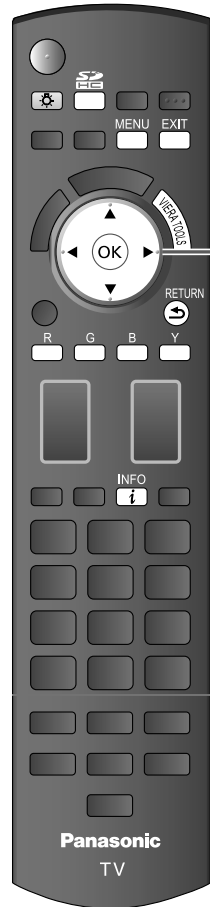
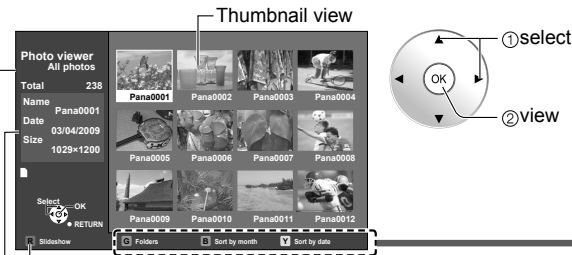


Photo viewer

1 Follow direction 1 in Movie player (P. 22)

2 Select the data to be viewed

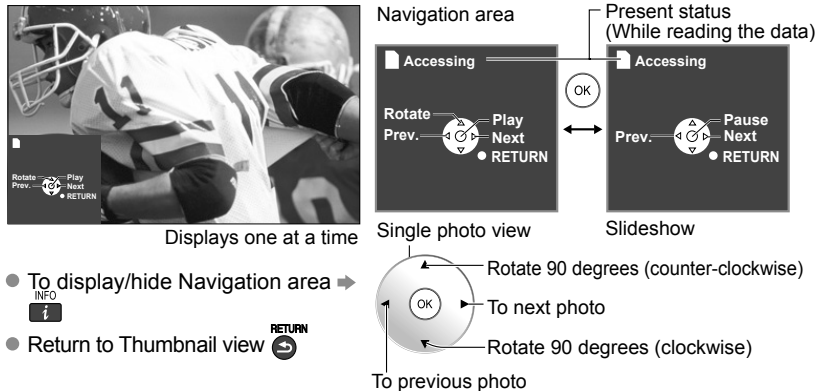


To Slideshow
Selected picture information is displayed.
Total number of images.

Note

- Depending on the JPEG format, "Information" contents may not be displayed correctly. Refer to p. 58 (Data format for SD card browsing) for details.

3 View



- To display/hide Navigation area →
- Return to Thumbnail view →
- Rotate 90 degrees (counter-clockwise)
- To next photo
- Rotate 90 degrees (clockwise)
- To previous photo

Press to exit from a menu screen



Press to return to the previous screen



Sort

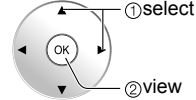
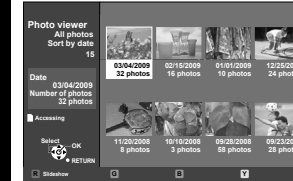
To sort by Folder, month or date

In 2
1 Select sort type



- Folders (ascending order of numeric/alphabet)
- Sort by month (descending order of the month)
- Sort by date (descending order of the date)

2 Select the directory.



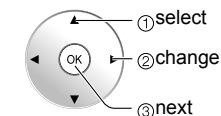
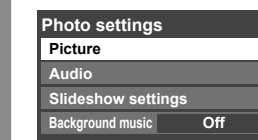
RETURN
Return to previous screen

Photo settings

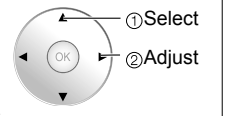
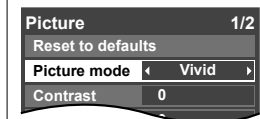
In 2 or 3
1 Display "Photo settings"



2 Select the item

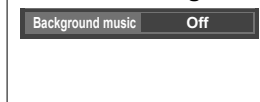


Adjust the picture



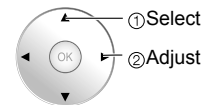
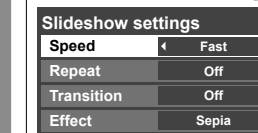
example :Picture menu
Picture menu/Audio menu (p. 34)

Set the Background music



Select the Background music from 3 types.
Each Background music plays for 90 seconds.
(Off/Music 1/Music 2/Music 3)

Slideshow settings



Note

- To stop in mid-cycle → Press RETURN

Speed	You can set how many seconds each image is displayed in Slideshow mode. (Very fast/Fast/Medium/Slow/Very slow)
Repeat	Turn the slideshow Repeat function on or off (On/Off).
Transition	Select transition effect (Off/Fade in/Wipe ↓/Wipe ↑/Wipe →/Wipe ←/Slide in ↓/Slide in ↑/Slide in →/Slide in ←/Zoom in/Comb ↑↓/Comb →←/Dissolve/Checker wipe/Random)
Effect	Select conversion effect (Off/Sepia/Gray scale)

VIERA IMAGE VIEWER

The VIERA Image Viewer is a function that lets you easily view still and motion images on a VIERA television by simply inserting an SD card into the VIERA SD card slot.

Watching Videos and DVDs

If you have applicable equipment connected to the TV, you can watch videos and DVDs on the TV's screen.

Input Select

You can select the external equipment to access.

- With the connected equipment turned On **Display the Input select menu**

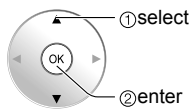


- Select the input mode

Input select	
1	TV
2	Component 1 AUX
3	Component 2
4	HDMI 1 GAME
5	HDMI 2
6	HDMI 3 GAME
7	Video 1
8	Video 2 GAME
9	PC

(example)

1	2	3
4	5	6
7	8	9
0	-	.

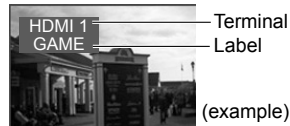


Press corresponding NUMBER button on the remote control to select the input of your choice.

Select the input of your choice, then press OK.

- During the selection, if no action is taken for several seconds, the "Input select" menu disappears.

- The terminal and label of the connected equipment are displayed. To label each of the inputs, please refer to p. 53.



Note

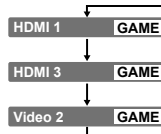
- The input label will be displayed on "Input select" screen if Input label is set on p. 53.
- For side input terminals (HDMI 3/Video 2), "GAME" input label is set as default. (Picture mode is set to "Game", refer to p. 59.)
- For more details for picture mode setting, refer to p. 59. For Input label, refer to p. 53.

Press Game to switch to the game screen

Switches to Input terminal that has "GAME" label.



- Cycle through the input terminals if there are multiple Input terminals that have "GAME" label. (p. 53)
- If there is no Input terminal with "GAME" label, you cannot switch the input terminal to any other input terminal than the one currently selected.



To return to TV



- Operate the connected equipment using the remote control supplied with the equipment

Note

- For details, see the manual of the connected equipment.

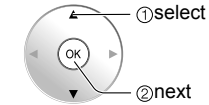
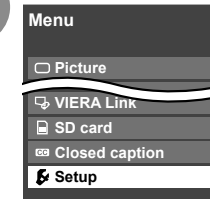
VIERA Link™ Setting

If you connect equipment that has the "HDAVI Control" function to a TV using an HDMI cable, you will find it easier to use. Please refer to p. 38-43. Before using these functions, you need to set "VIERA Link" setting to "On" as shown below.

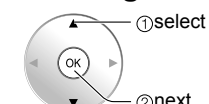
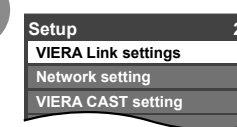
- Display menu



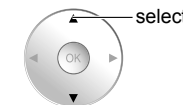
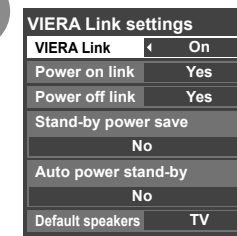
- Select "Setup"



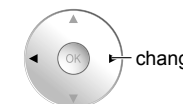
- Select "VIERA Link settings"



- Select "VIERA Link"



- Select "On" (default is On)



Press to exit from a menu screen



Press to return to the previous screen



Note

- If no HDMI equipment is connected or standard HDMI equipment (non- "VIERA Link") is used, set it to "Off".
- For more details on the external equipment's connections, please refer to the operating manuals for the equipment.

VIERA CAST™

Operate VIERA CAST

You can access information services (TV content) from the Home screen via the Internet.

- You need broadband environment to use this service.

Preparations

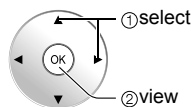
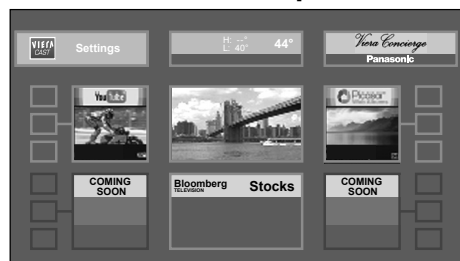
- Internet connections (p. 29)
- Network setting (p. 44)
- VIERA CAST setting (p. 46)



1 Display the Home screen



2 Select the item and press OK



Press to exit from a menu screen



Press to return to the Home screen



This screen is an example. It varies according to the usage conditions.
* Depending on the usage conditions, it may take a while to read all the data.

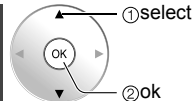
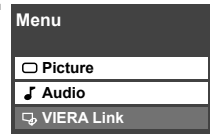
Other settings

To adjust picture and audio

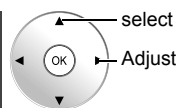
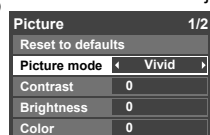
1 Display "Menu"



2 Select "picture" or "Audio"



3 Select the item and adjust



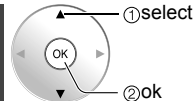
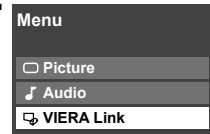
example: Picture menu
Picture menu/Audio menu (p. 34)

To use VIERA Link function

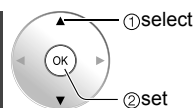
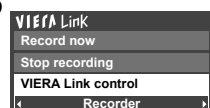
1 Display "Menu"



2 Select "VIERA Link"



3 Select the item and set



VIERA Link (p. 34, 42)

Internet connections

1 Contact your Broadband service provider

NOTICE: If you don't have Internet service by your local provider, please order a high-speed Internet service at no less than the following connection speed. If you already have such service, make sure that the connection speed exceeds the following.

- Required speed (effective): at least 1.5 Mbps for SD and 6Mbps for HD picture quality, respectively.
- Dial-up Internet service cannot be used for VIERA CAST.

2 Select wired or wireless connection

If the Cable/DSL modem is close to the TV and you have only one TV set, you may choose a wired connection. If the Cable/DSL modem is far from the TV and/or you have more TVs in the house, you may want to use a wireless network.

3 Connecting to the internet

A Basic connection

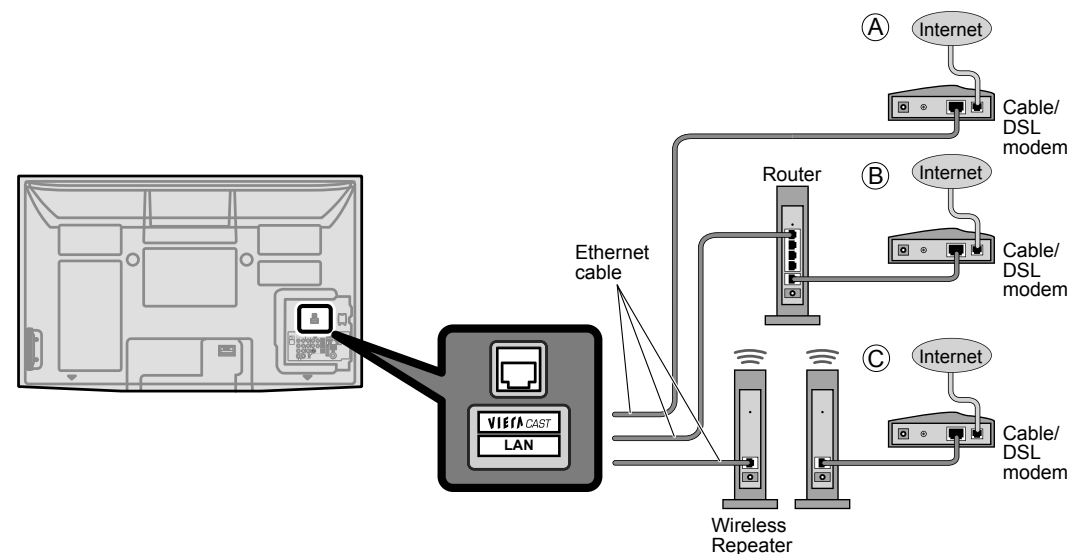
If you are not using the network for connecting anything else but the TV, you could just connect the TV directly to the Cable/DSL Ethernet connection (see schematic below).

B Advanced wired connection

If you are using the network for connecting various PCs/Laptops and want to connect the TV, you should use a router to connect the TV to the Internet (see schematic below).

C Advanced wireless connection

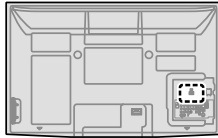
If you are using the network for connecting various PCs/Laptops and want to connect the TV, you could also use a wireless router to connect the TV to the Internet (see schematic below).



Network Camera

You can operate the Network camera from TV's remote and also check the images from Network camera on your TV

Basic operation for Network camera

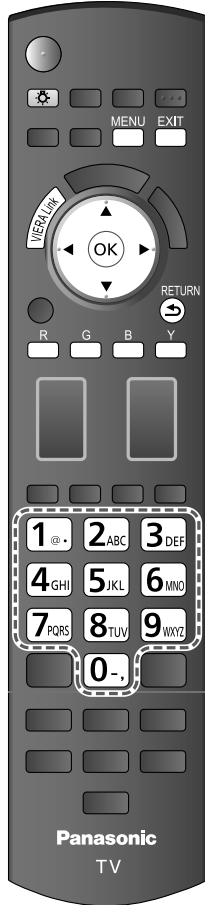


Preparations

- Internet connections (p. 29)
- Example of Network Camera connection (p. 31)
- Network setting (p. 44)
 - Before connecting the Network camera to TV, please complete the "IP setting" and run "Connection test"(p. 44)

Note

- This feature is only available with Panasonic-made network cameras released after summer 2009. (Preliminary model numbers: BL-C210A and BL-C230A) A number of VIERA-compatible network cameras can be founded at the following sites:
<http://www.panasonic.com/>
<http://panasonic.net/pcc/products/netwkcam/>



■ Press to exit from a menu screen
EXIT

■ Press to return to the previous screen
RETURN

1 With all connected equipment turned on Start up Network camera

- If there is no registered camera displayed, please set it in "Network Camera" settings. (p. 31)

Select "Network Camera" in "VIERA Link"

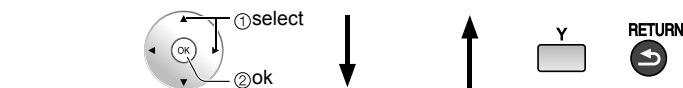
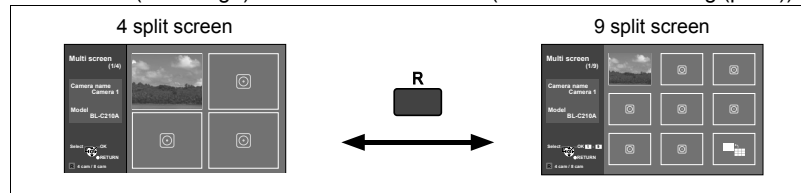
- Using VIERA TOOLS (p. 21)



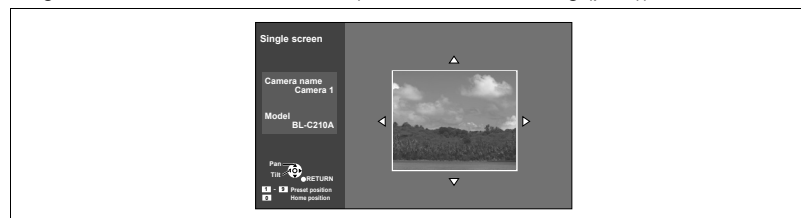
- There is also an option to start with sensor detection.

2 View

Multi screen (Still image) Without Default camera (Default camera setting (p. 31))



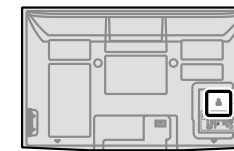
Single screen With Default camera (Default camera setting (p.32))



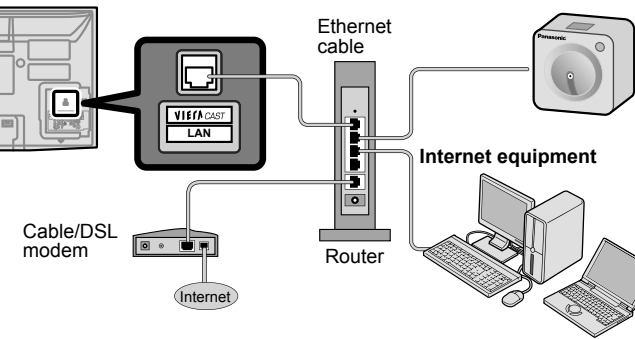
- For more details on setting and operation of the Network camera, please also read the operating manuals for the Network camera.

Example of Network Camera connection

Back of the TV



Network Camera



Set Internet setting (LAN) for connected equipment with Internet equipment if you need.
*You can not set Internet setting from this TV

Network Camera setting

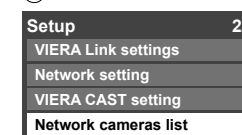
1 Display Menu



2 Select "Setup"

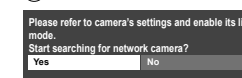


3 Select "Network cameras list"

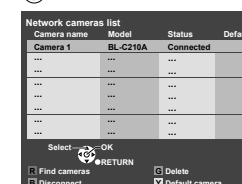


If there is no registered camera

4 Select "Yes" to start search



5 Set Network Camera setting



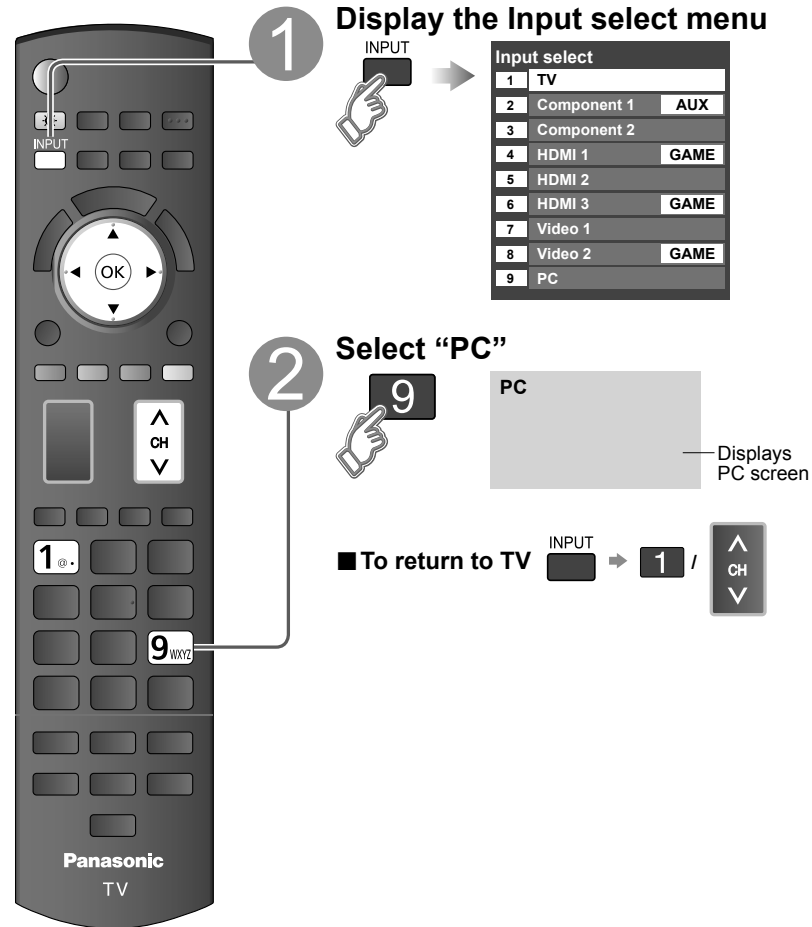
Network Camera setting operation

Camera name	Model	Status	Default
Camera 1	BL-C210A	Connected	
...
...
...
...
...
...
...

R	"Please refer to camera's settings and enable its link mode. Start searching for network camera?" ➔ "Yes" to start camera search. ● Before you start to search for a camera, switch the camera to registration mode. (For this operation, please refer to the operating manual for the Network camera.) ● Search condition also depends on "Network setting" (p.44)
G	"Remove camera information?" ➔ "Yes" to delete camera information.
B	"Disconnect to camera?" ➔ "Yes" to delete camera connection. "Disconnected" will be displayed in "Status"
Y	"Set this camera as default camera?" ➔ "Yes" to set to the default use. Displayed "(Default)" next to camera name.
OK	(Available only when reconnecting) "Connect to Camera?" ➔ "Yes": "Connect" will be displayed in "Status" (Attach up to 8 Network cameras simultaneously)

Displaying PC Screen on TV

The screen of the PC connected to the unit can be displayed on the TV.
You can also listen to PC sound with the audio cable connected. To connect PC (p. 55)



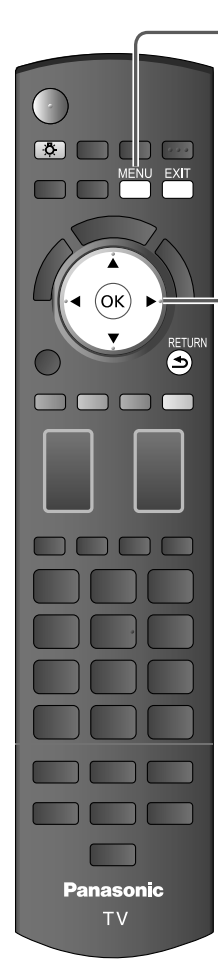
■ **PC menu setting** (change as desired)
● Making settings → "How to Use Menu Functions" ① to ④ (p. 34)

Menu	Item	Adjustments/Configurations (options)
Picture	Reset to defaults	Resets PC adjust
	Sync	<ul style="list-style-type: none"> ● H & V: The H and V sync signals are input from the HD/VD connector. (p. 61) ● On green: Uses a synchronized signal on the Video G signal, which is input from the G connector. (p. 61)
	Dot clock	Alleviates the problem if a picture appears to be vertically-striped, flickers partially or is blurred.
	H-position	Adjusts the horizontal position.
	V-position	Adjusts the vertical position.
	Clock phase	<p>Alleviates the problem if the whole picture appears to flicker or is blurred. First adjust the Dot Clock to get the best possible picture, then adjust the Clock Phase so that a clear picture appears.</p> <p>Note</p> <p>It may not be possible to display a clear picture due to poor input signals.</p>
	Input resolution	<p>Switches to wide display.</p> <ul style="list-style-type: none"> ● Input signal switched from 640×480 to 852×480 ● Input signal switched from 1024×768 to 1280×768 or 1366×768
	H-frequency	Displays the H (Horizontal)/V (Vertical) frequencies.
	V-frequency	
	PC adjustments	

● Audio menu (p. 34)

How to Use Menu Functions

Various menus allow you to make settings for the picture, sound, and other functions so that you can enjoy watching TV best suited for you.

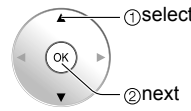
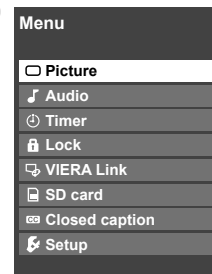


1 Display menu



- Displays the functions that can be set (varies depending on the input signal)

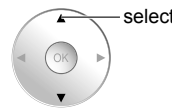
2 Select the menu



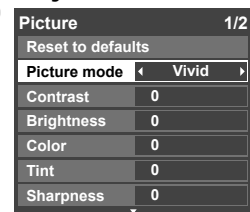
3 Select the item



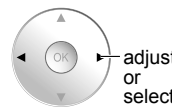
(example: Picture menu)



4 Adjust or select



(example: Picture menu)



Press to exit from a menu screen



Press to return to the previous screen



Menu list

Menu	Item	
Picture	Reset to default	
	Picture mode	
	Contrast, Brightness, Color, Tint, Sharpness	
	Color temp.	
	Color mgmt.	
	x.v.Color	
	C.A.T.S.	
	Video NR	
	Zoom adjustments	
	PC adjustments	
	Advanced picture	3D Y/C filter
		Color matrix
		Block NR
		Mosquito NR
Black level		
3:2 pulldown		
24p Direct in		
H size		
Audio	Reset to default	
	Bass	
	Treble	
	Balance	
	Advanced audio	A.I. sound
		Surround
		Bass boost
		Volume leveler
		TV speakers
		HDMI 1 in HDMI 2 in HDMI 3 in
Timer	Sleep, Timer 1-5	
Lock		
VIERA Link	Record now Stop recording VIERA Link control Speaker output	
SD card	SD card	
Closed caption	Closed caption	

Adjustments/Configurations (alternatives)	
Resets all picture adjustments to factory default settings except for "Advanced picture".	Reset to defaults
Basic picture mode (Vivid/Standard/THX/Game/Custom) (p. 59)	Picture mode Vivid
Adjusts color, brightness, etc. for each picture mode to suit your taste	Contrast +20 Tint 0
• Display range Contrast/Brightness/Color/Sharpness: 0 - 100 Tint: -50 - +50	Brightness 0 Sharpness 0
Color temp. Selects a choice of Cool(blue), Normal, or Warm(red) color. (Cool 2/Cool 1/Normal/Warm 1/Warm 2)	Color temp. Normal
On: Enhances green and blue color reproduction, especially outdoor scenes. (On/Off)	Color mgmt. On
Auto: Provide the appropriate picture when images corresponding to "x.v.Color" are input via the HDMI input of this TV. (Off/Auto)	x.v.Color Auto
Adjusts the brightness and gradation according to the ambient lighting condition. (Off/On)	C.A.T.S. Off
Reduces noise, commonly called snow. Leave it off when receiving a strong signal. (Off/Weak/Medium/Strong)	Video NR Off
Adjusts vertical alignment and size when aspect setting is "ZOOM" (p. 57)	Zoom adjustments
Sets PC display (p. 32)	PC adjustments
Minimizes noise and cross-color in the picture. (On/Off)	3D Y/C filter On
Selects image resolution of component-connected devices (HD/SD) • SD: Standard Definition HD: High Definition • Only 480p signal accepted; regular TV (NTSC) is not available.	Color matrix SD
Reduces noise of specific digital signals of DVD, STB, etc. (On/Off)	Block NR Off
Reduces HDTV flicker noise in the contoured sections of an image (Off/On)	Mosquito NR Off
Selects Dark or Light. Valid only for external input signals. (Dark/Light)	Black level Light
Adjust the picture recorded in 24 fps for optimum quality. (On/Off)	3:2 pulldown Off
48Hz: Achieves more cinematic playback by reproducing the movie contents at twice the speed of 24 frames per second. (60Hz/48Hz)	24p Direct in 60 Hz
Selects between 95 % (Size 1) or 100 % (Size 2) for the scanning area with High-definition signal. (Size 1/ Size 2) Select "Size 1" if noise is generated on the edges of the screen. • Size 1: Selected item for "HD size". Scanning 95% • Size 2: Selected item for "HD size". Scanning 100%	HD size Size1
Adjust horizontal display range to reduce noise of both side edges of an image. (Size 1/Size 2) Size 2: Adjust image size according to aspect mode for reducing noise. (p. 60)	H size Size 1
Resets Bass, Treble and Balance adjustments to factory default settings.	Reset to defaults
Increases or decreases the bass response.	Bass 0
Increases or decreases the treble response.	Treble 0
Emphasizes the left / right speaker volume.	Balance 0
Equalizes overall volume levels across all channels and external inputs. (On/Off)	A.I. sound On
Enhances audio response when listening to stereo. (On/Off)	Surround Off
Enhances bass sound and provides powerful sound. (On/Off)	Bass boost Off
Minimizes volume disparity after switching to external inputs.	Volume leveler 0
Switch to "Off" when using external speakers (On/Off) • "A.I. sound", "Surround", "Volume leveler" and "Bass boost" do not work if "Off" is selected.	TV speakers On
The default setting is "Digital" for HDMI connection. (Digital input signal) Select audio input terminal when DVI cable is connected. (Analog audio input signal) (Digital/Component 1/Component 2/Video 1/Video 2)	HDMI1 in Digital
	HDMI2 in Digital
	HDMI3 in Digital
The TV can automatically turn On/Off at the designated date and time (p. 54)	
Locks the channels and programs (p. 48)	
[Record now/Stop recording] Records programs on the recorder immediately with the TV's remote control (p. 42-43).	
[VIERA Link control] Selects equipment to access and operate. (Recorder/Home theater/Player/Camcorder/LUMIX/Network Camera) (p. 42-43)	
[Speaker output] Selects an audio output. (Home theater/TV) (p. 42-43) • VIERA Link menu is accessible directly by pressing the VIERA Link button on the remote control. (p. 42)	
[Photo viewer] To view the still picture. (p. 24)	SD card
[Movie player] To view moving pictures recorded in MPEG 2 or AVCHD format. (p. 22)	
Displays subtitles (Closed caption) (p. 52)	Closed caption

• In AV mode, the Audio menu and Setup menu give fewer options.

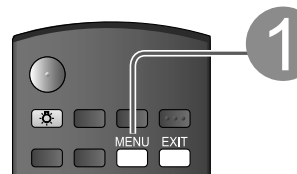
How to Use Menu Functions (picture, sound quality, etc.)

Advanced

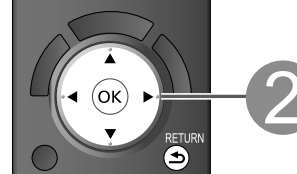
How to Use Menu Functions

Various menus allow you to make settings for the picture, sound, and other functions so that you can enjoy watching TV best suited for you.

1 Display menu



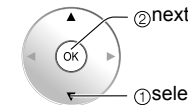
2 Select "Setup"



● Displays the functions that can be set (varies depending on the input signal)

Menu


- Picture
- Audio
- Timer
- Lock
- VIERA Link
- SD card
- Closed caption
- Setup**




②next
①select

3 Select the item

● Press to exit from a menu screen

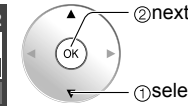


● Press to return to the previous screen



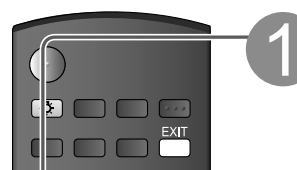
Setup 1/2

- Channel surf mode
- Language
- Clock
- ANT/Cable setup
- Connected devices
- Anti image retention

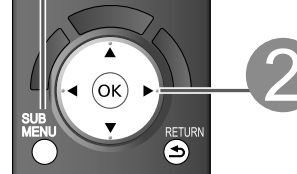


②next
①select

1 Display Sub Menu

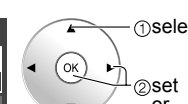


2 Select the item



Setup SUB MENU

- Channel surf mode
- Set favorite
- Edit CH caption
- Signal meter



①select
②set or next

Menu list

Menu	Item		
Setup	Channel surf mode		
	Language		
	Clock		
	ANT/Cable setup		
	Connected devices	Input labels	
		Audio out	
	Anti image retention	Pixel orbiter	
		Time (minutes)	
		4:3 side bars	
		Scrolling bar	
	VIERA Link settings	VIERA Link	
		Power on link	
		Power off link	
		Stand-by power save	
Auto power stand-by			
Network setting			
VIERA CAST setting			
Network cameras list			
ECO/energy saving	No signal for 10 minutes		
	No activity for 3 hours		
Advanced setup	Auto power on		
	Play SD card automatically		
About			
Reset to default			

Sub menu list

Menu	Item	
Setup SUB MENU	Channel surf mode	
	Set favorite	
	Edit CH caption	
	Signal meter	

(Continued)

Adjustments/Configurations (alternatives)		
Sets the mode to select the channel with Channel up/down button (All/Favorite/Digital only/Analog only) ● Favorite: Only channels registered as FAVORITE (p. 20)	Channel surf mode	All
Selects the screen menu language (p. 16)	Language	
Adjusts the clock (p. 18)	Clock	
Sets channels (p. 50)	ANT/Cable setup	
Selects the terminal and label of the external equipment (p. 53)	Input labels	
[Component 1/Component 2/HDMI 1/HDMI 2/HDMI 3/Video 1/Video 2] To prevent howling, stops output of audio specified in this menu. (p. 53) (On/Off) Prevents "Image retention" with Wobbling. (Automatic/Periodic) ● Automatic: Shifts the display image automatically. ● Periodic: Shifts the display image every (1/2/3/4) minutes according to what was set in the "Time (minutes)" menu.	Pixel orbiter	Automatic
Sets the time for "Pixel orbiter-Periodic" setting. (1/2/3/4)	Time (minutes)	4
Change the brightness of the side bar (Off/Dark/Mid/Bright) (4:3 mode only) ● The recommended setting is "Bright" to prevent panel "Image retention". (p. 60)	4:3 side bars	Bright
Press "OK" to start "Scrolling" on the screen (p. 60)	Scrolling bar	
Controls equipment connected to HDMI terminals (p. 40) (On/Off) ● "Power off link", "Power on link", "Stand-by power save", "Auto power stand-by" and "Default speakers" cannot be selected if "Off" is set.	VIERA Link	On
Sets "Power on link" of HDMI connection equipment (p. 40) (Yes/No)	Power on link	Yes
Sets "Power off link" of HDMI connection equipment (p. 40) (Yes/No)	Power off link	Yes
Set "Stand-by power save" of HDMI connection equipment. (p. 40) (No/Yes)	Stand-by power save	No
Set "Auto power stand-by" of HDMI connection equipment. (p. 40) (No/Yes (with reminder)/Yes (no reminder))	Auto power stand-by	No
Selects the default speakers (p. 40) (TV/Theater)	Default speakers	TV
Sets Network setting (p. 46)	Network setting	
Sets VIERA CAST setting (p. 46)	VIERA CAST setting	
Set Network Camera status. (Search/Registration/Connection/Deleting/Default setting etc.) (p. 30)	Network cameras list	
To conserve energy, the TV automatically turns off when NO SIGNAL and NO OPERATION is performed for more than 10 minutes. (Enable/Disable) Note ● Not in use when setting "Auto power on", "On/Off Timer", "Lock", "SD mode" or Digital channel. ● "No signal for 10 minutes was activated" will be displayed for about 10 seconds when the TV is turned on for the first time after turning the power off by "No signal for 10 minutes". ● The on-screen display will flash 3, 2 and 1 to indicate the last three (3) remaining minutes prior to the shut-off.	No signal for 10 minutes	Enable
To conserve energy, the TV automatically turns off when no operation of remote or side panel key continues for more than 3 hours. (Enable/Disable) Note ● Not in use when setting "Auto power on", "On/Off Timer" or PC input display. ● "No activity for 3 hours was activated" will be displayed for about 10 seconds when the TV is turned on for the first time after turning the power off by "No activity for 3 hours". ● The on-screen display will flash 3, 2 and 1 to indicate the last three (3) remaining minutes prior to the shut-off.	No activity for 3 hours	Disable
Turns TV On automatically when the cable box or a connected device is turned On. (No/Yes) TV AC cord must be plugged into this device. TV comes on every time the power is restored. ● The "Sleep" timer, "On / Off timer", and "First time setup" will not function if "Auto power on" is set. (p. 54)	Auto power on	No
Set "Movie", "Thumbnail" or "Slideshow" to play back SD cards automatically. (Slideshow/Thumbnail/Movie/Set later/Off)	Play SD card automatically	Set later
Displays TV version and software license.	About	
Performing Reset will clear all items set with Setup, such as channel settings. (p. 50)	Reset to defaults	

Adjustments/Configurations (alternatives)		
Sets the mode to select the channel with Channel up/down button (All/Favorite/Digital only/Analog only)	Channel surf mode	
Sets favorite channels. (p. 20)	Set favorite	
Changes the station identifier. (p. 51)	Edit CH caption	
Checks the signal strength if interference or freezing occurs on a digital image. (p. 51)	Signal meter	

● How to Use Menu Functions (picture, sound quality, etc.)

Advanced

VIERA Link™ “HDAVI Control™”*

Simultaneously control all Panasonic “HDAVI Control” equipped components using one button on the TV remote. Enjoy additional HDMI Inter-Operability with Panasonic products which have the “HDAVI Control” function. This TV supports “HDAVI Control 4” function. Connections to the equipment (DVD recorder DIGA, HD Camcorder, Player theatre, RAM theater, Amplifier, etc.) with HDMI cables allow you to interface with them automatically.

Equipment with the “HDAVI Control” function enables the following operations:

Version	Operations
HDAVI Control or later	<ul style="list-style-type: none"> Automatic Input Switching (p. 41) Power on link (p. 41) Power off link (p. 41) Default speakers (p. 41) One-touch theater playback (p. 41) Speaker control (p. 43)
HDAVI Control 2 or later	<ul style="list-style-type: none"> VIERA Link control only with the TV’s remote control(P. 43) Auto power stand-by (for available equipment only) (p. 41)
HDAVI Control 3 or later	<ul style="list-style-type: none"> Providing the setting information (p. 41) Automatic lip-sync function (p. 41) Direct TV Recording (p. 43)
HDAVI Control 4	<ul style="list-style-type: none"> Stand-by power save (with quick start mode) (p. 41)

■ **For the first time/When adding new equipment, reconnecting equipment or changing the setup after the connection, turn the equipment on and then switch the TV on. Set the input mode to HDMI1, HDMI2 or HDMI3 (p. 26), and make sure that the image is displayed correctly.**

VIERA Link “HDAVI Control”, based on the control functions provided by HDMI which is an industry standard known as HDMI CEC (Consumer Electronics Control), is a unique function that we have developed and added. As such, its operation with other manufacturers’ equipment that supports HDMI CEC cannot be guaranteed. Please refer to the individual manuals for other manufacturers’ equipment supporting the VIERA Link function.

■ HDMI cable

This function needs an HDMI compliant (fully wired) cable. Non-HDMI-compliant cables cannot be utilized. It is recommended that you use Panasonic’s HDMI cable. Recommended part number: RP-CDHF15 (4.9 ft/1.5 m), RP-CDHG15 (4.9 ft/1.5 m), RP-CDHF30 (9.8 ft/3.0 m), RP-CDHG30 (9.8 ft/3.0 m), RP-CDHG50 (16.4 ft/5.0 m)

* For more details on the external equipment’s connections, please refer to the operating manuals for the equipment.

VIERA Link™ Connections

Follow the connection diagrams below for HDAVI control of a single piece of AV equipment such as a DVD recorder (DIGA), RAM theater, or Player theater system. Refer to page 40-43 for Setup Menu settings and additional control information.

- Optional HDMI and/or optical cables are not included.

If connection (or setting) of equipment compatible with HDAVI control is changed, switch the power of this unit Off and On again while the power of all equipment is On (so that the unit can correctly recognize the connected equipment) and check that the DVD recorder (DIGA), RAM theater, and Player theater playback operate.

Note

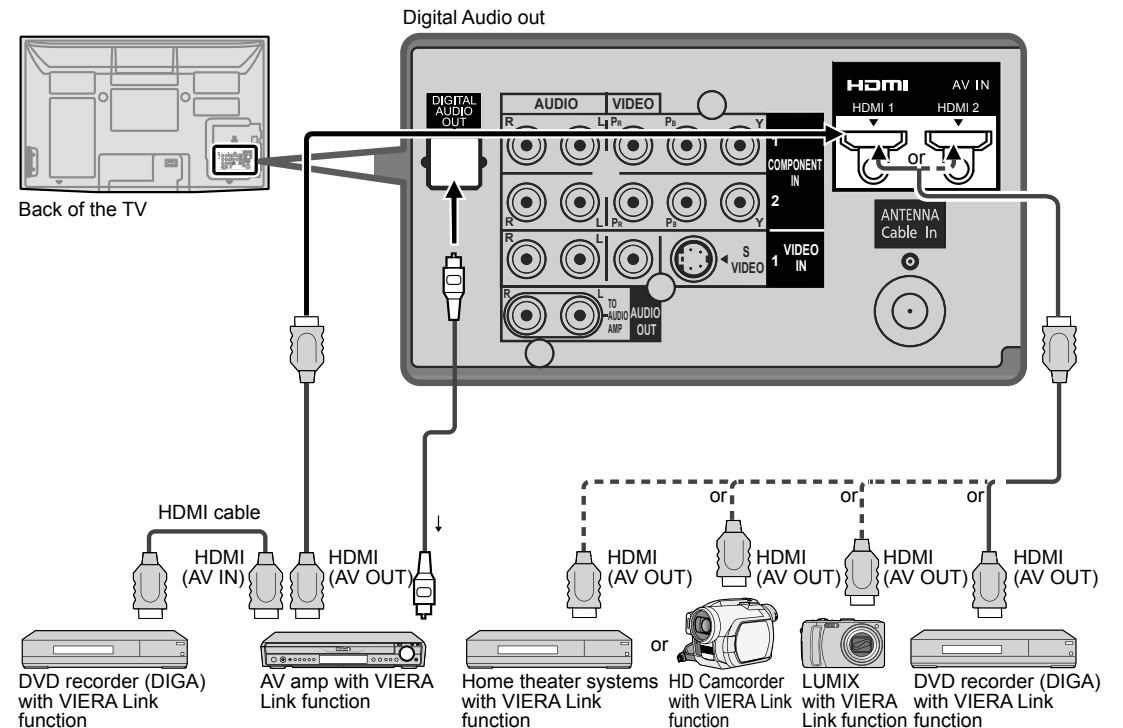
- HDMI 1 is recommended. When connecting to HDMI 2/HDMI 3, set the input mode to HDMI 2/HDMI 3 (p. 26) initially before connecting to HDMI 2/HDMI 3. After connection, confirm the HDMI control functions (p. 40-43).

■ Connecting this unit to the DVD recorder (DIGA), RAM theater, or Player theater

- For DVD recorder (DIGA): Connect with HDMI cable
- For RAM theater and Player theater: Connect with the HDMI and audio cables. If audio cable is not connected, you cannot listen to the TV program through the theater system.

■ Connecting this unit to a DVD recorder (DIGA) and AV amp

When using a “VIERA Link” audio-video amplifier and a compatible DVD recorder (DIGA) use a daisy chain connection as shown below.



- One AV amp and one DVD recorder (DIGA) can be operated with this unit.
- Be sure to connect the AV amp between this unit and the DVD recorder (DIGA).

■ Setting of this unit after connection

After making connections as shown above, set “VIERA Link” (under “VIERA Link settings”) to “On” using the Setup menu. (p. 27, 40-41).

Note

- Individual HDMI equipment may require additional menu settings specific to each model. Please refer to their respective operating instruction manuals.
- When audio from other equipment connected to this unit via HDMI is output using “DIGITAL AUDIO OUT” of this unit, the system switches to 2CH audio. (When connecting to an AV amp via HDMI, you can enjoy higher sound quality.)
- For details about HDMI cable for connecting Panasonic HD camcorder, read the manual for the equipment.

VIERA Link™ “HDAVI Control™”*

(Continued)

1 Display menu
MENU

2 Select “Setup”
Menu
Picture
VIERA Link
SD card
Closed caption
Setup

3 Select “VIERA Link settings”
Setup 2/2
VIERA Link settings
Network setting
VIERA CAST setting

4 Select “VIERA Link”
VIERA Link settings
VIERA Link On
Power on link Yes
Power off link Yes
Stand-by power save No
Auto power stand-by No
Default speakers TV

5 Select “On”
(default is On)

6 Select settings
VIERA Link settings
VIERA Link On
Power on link Yes
Power off link Yes
Stand-by power save No
Auto power stand-by No
Default speakers TV

7 Set
VIERA Link settings
VIERA Link On
Power on link Yes
Power off link Yes
Stand-by power save No
Auto power stand-by No
Default speakers Theater

■ Press to exit from a menu screen
EXIT

■ Press to return to the previous screen
RETURN

Automatic Input Switching

At the start of the DIGA, Player theater, or RAM theater playback, the TV’s input automatically switches to the input based on the playback equipment.

- For the RAM theater, the speakers automatically switch to the theater system.
- If using the DIGA operation, the TV’s input automatically switches to the DIGA and DIGA menu is displayed.

Power on link

When “Yes” is selected (p. 37), TV is turned on automatically and switches to the appropriate HDMI input whenever VIERA Link compatible equipment is initially turned on and Play mode is selected.

Power off link

When “Yes” is selected (p. 37) and the TV is turned off, all connected VIERA Link compatible equipment is also automatically turned off.

- DIGA (Panasonic DVD Recorder) will not turn off if it is still in rec mode.
- Caution:** The TV remains on even if the VIERA Link compatible equipment is turned off.

Stand-by power save (for “HDAVI Control 4” (with quick start mode))

- Condition
Power off link: Yes
Stand-by power save: Yes
The equipment has “HDAVI Control 4 (with quick start mode)” connected with HDMI cable.
When TV is turned off, all connected VIERA Link compatible equipment is moved to ECO standby mode* automatically under above conditions.
- * Minimum power consumption of standby condition for the equipment.

Auto power save (for “HDAVI Control 2 or later”)

- Condition
Auto power stand-by: Yes
The equipment has “HDAVI Control 2 or later” (for available equipment only) connected with HDMI cable.
[Examples of timing for operation]
• When the input is switched from HDMI.
• When the “Speaker output” is changed from “Home theater” to “TV”.

The connected VIERA Link compatible equipment will be turned off automatically when not in use.

Default speakers

“TV” is the default setting. To set the Home Theater system as default speakers, change the default speakers setting from “TV” to “Theater”. Sound will be output from the Home Theater whenever the TV is powered on.

One-touch theater playback

If the “ONE TOUCH PLAY” key is pressed on the remote control for Panasonic Home Theater system, the following sequence of operations is performed automatically.

- ① Home Theater power switches On, and playback begins.
- ② TV power switches On, and the playback screen is displayed.
- ③ Audio is muted on the TV and switches to the theater system.

The following information about the TV settings can be transmitted to each piece of equipment (Recorder/Home theater/Player) that has “HDAVI Control 3 or later” function connected to a TV with HDMI cable.

Transmittable data	Recorder	Home theater	Player
① On Screen Display Language setting (English/Español/Français)	○	○	○
② Panel Aspect Ratio (16:9 fixed)	○	○	○
③ Closed caption information (Mode/CC type/Digital setting)	○	---	---
④ Channel information (Input signal/Channel list/Caption information)	○	---	---

Note

- There is a possibility that all the GUI language information might be set from equipment that has HDMI CEC function connected to TV with HDMI cable. Depending on operating conditions or the specification for each piece of equipment the setting may or may not be applied.
- For more details on the external equipment’s operation, please refer to the operating manuals for the equipment.

[For Recorder]

- You cannot operate other functions while transmitting TV’s information above except Power On/Off key operation. When you turn off this unit, the transmission will be interrupted (only when you are transmitting ④ Channel information).

Providing the setting information (for “HDAVI Control 3 or later”)

Automatic lip-sync function (for “HDAVI Control 3 or later”)

Minimizes lip-sync delays between the picture and audio when you connect to a Panasonic theater system or Amplifier.

VIERA Link™ “HDAVI Control™”

You can enjoy more convenient operation with the “HDAVI Control” function in the “VIERA Link” menu.

For more details on the “HDAVI Control” function, refer to p. 38

- 1 Display VIERA Link menu**
- 2 Select the item**
- 3 Select**
- 4 Set**

Speaker control

VIERA Link control only with the TV's remote control (for “HDAVI Control 2 or later”)

Direct TV Recording (for “HDAVI Control 3 or later”)

■ Press to exit from a menu screen



■ Press to return to the previous screen

RETURN

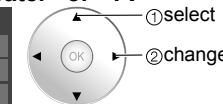


(Continued)

You can select Home theater or TV speakers for audio output. Control theater speakers with the TV's remote control. This function is available only when Panasonic Amplifier or Player theater is connected.

① Select “Speaker output”

② Select “Home theater” or “TV”



■ **Home theater:** Adjustment for equipment

Volume up / down →



Mute →



- The sound of the TV is muted.
- When the equipment is turned off, the TV speakers take over.
- Selecting “Home theater” turns the equipment on automatically if it is in standby mode.

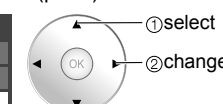
■ **TV:** The TV speakers are on.

In the VIERA Link menu, you can select HDMI connected equipment and access it quickly. Continue using your TV's remote control to operate the equipment, pointing it at the TV.

① Select “VIERA Link control”

② Select the equipment you want to access.

- (Recorder/Home theater/Player/Camcorder/LUMIX/Network Camera)
- Using VIERA TOOLS (p. 21)
- If there is more than one equipment item, a number after the name indicates the number of items. (e.g. Recorder 1/Recorder 2/Recorder 3...)
- The number of equipment items that can be connected is three for recorders, and a total of three for Home theater/Player/Camcorder/LUMIX.



You can select available items only.

Note

- There is a limit to the number of HDMI connectors.

③ Operate the equipment with the TV's remote control, pointing it at the TV.

- To operate the equipment, read the manual of the equipment.

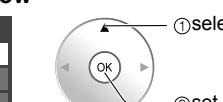
Available TV's remote control buttons

Whether an operation is available differs depending on the connected equipment.

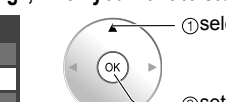
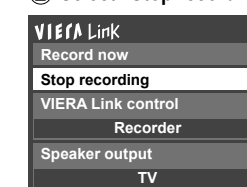
	Move the cursor/Select		Play
	Set/Access		Stop
	Return to previous menu		Reverse/Forward
	Display the functions menu on the equipment		Skip Reverse/Forward
	Available when the purpose of the keys is displayed on screen		Pause
	Exit		Closed caption
	Channel Up/Down		SAP (Select Audio Mode)
	0-9		Select digital subchannel

Records the current program on the recorder immediately.

① Select “Record now”



② Select “Stop recording”, when you want to stop recording



- For optimal recording, the settings of the recorder might be required. For details, read the manual of the recorder.

- Recording will not stop automatically when the program is finished.

Network Setting

This is a setting for connecting to a broadband environment.

1 Display menu
MENU

2 Select "Setup"
Menu
 □ Picture
 🎵 Audio
 ⌚ Timer
 🔒 Lock
 🔗 VIERA Link
 📄 SD card
 🗨 Closed caption
 ⚙ Setup

3 Select "Network setting"
Setup 2/2
 VIERA Link settings
Network setting
 VIERA CAST setting
 Network Cameras list
 ECO/energy saving
 Advanced setup
 About
 Reset to defaults

4 Select the item and adjust
 Network setting 1/2
 Connection test Succeeded
 IP setting mode Automatic
 IP address 192.168.0.5
 Subnet mask 255.255.255.0
 Default gateway 192.168.0.254
DNS setting mode Automatic
 Primary DNS 192.168.0.20
 Secondary DNS 192.168.0.21
 Network setting 2/2
LAN speed setting Automatic
 LAN speed 10BASE half duplex
 Software update
 MAC address 12-34-56-78-90-ab

■ Press to exit from a menu screen
EXIT

■ Press to return to the previous screen
RETURN

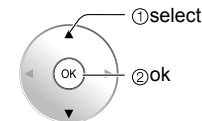
Connection test

Check that the network settings are as shown below, and then start "Connection test".

1 Select "Connection test" and press OK.

*Press OK again to cancel the test.
(It takes a while to cancel the test.)

Network setting 1/2	
Connection test	Succeeded
IP setting mode	Manual
IP address	192.168.0.5
Subnet mask	255.255.255.0
Default gateway	192.168.0.254



Succeeded: "Connection test" succeeded
Only home network:

Home network is available.

Failed: Check the broadband environment connection and settings and the network settings, and then perform the test again.

Test in progress

---: Test not yet performed

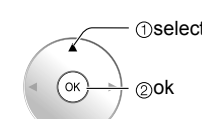
IP setting

- IP setting mode
- IP address
- Subnet mask
- Default gateway

1 Select "IP setting mode" and set to "Automatic".

(When IP automatic acquisition in DHCP can be used)

Network setting 1/2	
Connection test	Succeeded
IP setting mode	Automatic
IP address	192.168.0.5
Subnet mask	255.255.255.0
Default gateway	192.168.0.254



The acquired address is displayed.

2 Each IP address is acquired automatically.

Manual setting

- 1 Select "IP setting mode" and set to "Manual"
- 2 Select the item and press OK
- 3 Check the specifications of the broadband router and enter each IP address.

Subnet mask 0 . 0 . 0 . 0

1 2 3
4 5 6
7 8 9
0

① change channel
② ok

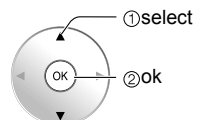
DNS setting

- DNS setting mode
- Primary DNS
- Secondary DNS

1 Select "DNS setting mode" and set to "Automatic".

(When DNS automatic acquisition in DHCP can be used)

Network setting 1/2	
Connection test	Succeeded
DNS setting mode	Automatic
Primary DNS	192.168.0.20
Secondary DNS	192.168.0.21



The acquired address is displayed.

2 Each IP address is acquired automatically.

If you are using a broadband router, IP automatic acquisition in DHCP can be used under normal circumstances. If you are not sure, check with the person who installed the equipment, or check the instructions for each device.

Manual setting

- 1 Select "DNS setting mode" and set to "Manual"
- 2 Select the item and press OK
- 3 Enter each IP address as was specified by the provider.

Primary DNS 0 . 0 . 0 . 0

1 2 3
4 5 6
7 8 9
0

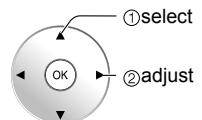
① select
② ok

Connection speed setting

- LAN speed setting
- LAN speed

1 Select "LAN speed setting" (Default is "Automatic")

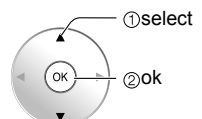
Network setting 2/2	
LAN speed setting	Automatic
LAN speed	10BASE half duplex
Software update	
MAC address	12-34-56-78-90-ab



- Normally, select "Automatic".
- If "Connection test" failed, set the "LAN speed setting" to "manual" and then select "10BASE half duplex", "10BASE duplex", "100BASE half duplex" or "100 BASE duplex".
- Cannot be selected when the "LAN speed setting" is "Automatic".
- Changing the settings may make it impossible to connect some types of equipment.

1 Select "Software update"

Network setting 2/2	
LAN speed setting	Automatic
LAN speed	10BASE half duplex
Software update	
MAC address	12-34-56-78-90-ab



2 Press OK to start the software update screen.

3 Follow directions of the screen.

* Set "Clock" first. (p. 18)

• The network settings become effective when you close the menu and run "Connection test".

VIERA CAST™ Setting

1 Display menu
MENU

2 Select "Setup"
Menu
Picture
Audio
Timer
Lock
VIERA Link
SD card
Closed caption
Setup

3 Select "VIERA CAST setting"
Setup 2/2
VIERA Link settings
Network setting
VIERA CAST setting
Network Cameras list
ECO/energy saving
Advanced setup
About
Reset to defaults

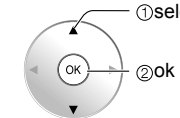
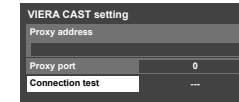
4 Select the item and adjust
VIERA CAST setting
Proxy address
Proxy port 0
Connection test ---

■ Press to exit from a menu screen
EXIT

■ Press to return to the previous screen
RETURN

Connection test

1 Select "Connection test" and Press OK



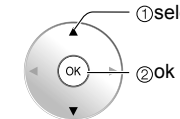
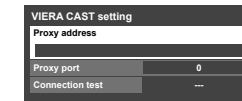
- When a connection is made to the connection test site and a message is displayed that indicates a successful connection
 - ➔ The settings are correct.
 - When the connection is not successful
 - ➔ An error message is displayed on the screen.
 - * Check the connection and settings. (p. 44-45, below)
- If you perform the proxy settings, check the proxy address and the proxy port number.

Set only if specified by the provider.
It is not required for normal household use.

■ Proxy address

This is the address of the relay server that is connected to the target server instead of the browser and sends data to the browser.
Setting is only required if specified by the provider.

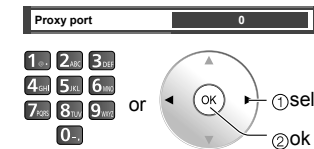
1 Select "Proxy address" and Press OK



■ Proxy port

This number is specified by the provider together with the proxy address.

1 Select "Proxy port" and Press OK. 2 Enter the Port number.



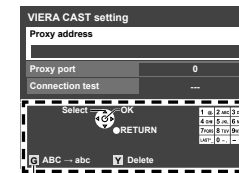
2 Enter address

(see "Entering characters" below)

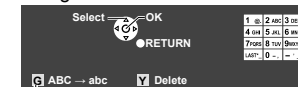


3 Select "OK"

You can use the remote control key to enter the alphanumeric characters.



Navigation area



Switches Input mode alphabet to numeric.


Characters are displayed as shown in following table.

		ABC/abc												123		
1	@	.	/	:	~	_	1									1
2	a/A	b/B	c/C	2												2
3	d/D	e/E	f/F	3												3
4	g/G	h/H	i/I	4												4
5	j/J	k/K	l/L	5												5
6	m/M	n/N	o/O	6												6
7	p/P	q/Q	r/R	s/S	7											7
8	t/T	u/U	v/V	8												8
9	w/W	x/X	y/Y	z/Z	9											9
0	-	,	;	'	"	?	!	()	&	\	0	0			0
LAST	*	#	\$	%	=		{	}	[]						*
-	Space												#			

● VIERA CAST setting will be effective when you close the menu or run "Connection test".

Lock

You can lock specified channels or shows to prevent children from watching objectionable content.



1 Display menu
 MENU

2 Select "Lock"
 Menu
 Picture
 Audio
 Timer
Lock
 VIERA Link
 SD card
 Closed caption
 Setup

3 Input your 4-digit password
 A 4-digit code must be entered to view a blocked program or change rating settings.
 If it is your first time entering the password, enter the password twice in order to register it.

4 Select the Lock mode
 Lock
 Mode Off
 Channel Off
 Game Off
 Program Off
 VIERA CAST Off
 Change password

5 Select the item
 Lock
 Mode Custom
 Channel Off
 Game Off
 Program Off
 VIERA CAST Off
 Change password

6 Set

Caution
 ● Make a note of your password in case you forget it. (If you have forgotten your password, consult your local dealer.)

Note
 ● When you select a locked channel, a message will be displayed that allows you to view the channel if you input your password.

■ To select the channel or the rating of the program to be locked

Channel lock
 Select up to 7 (1-7) channels to be blocked. These channels will be blocked regardless of the program rating.
 ① Select "Mode" and set to "Custom"
 ② Select channel to lock.

Channel lock	
Mode	Custom
Channel 1	3
Channel 2	4
Channel 3	-
Channel 4	-

To lock/unlock all channels:
 Select "Mode" and set to "All" or "Off".
 All: Locks all channels
 Off: Unlocks all channels

Game lock
 Locks Channel 3, Channel 4 and external inputs.
 Select "Game" in ⑤ and set to "On".

Program lock
 ■ To set a rating level
 "V-chip" technology enables restricted shows to be locked according to TV ratings.
 ① Select "Mode" and set to "On".

Program lock	
Mode	On
MPAA	Off
U.S.TV	Off
C.E.L.R.	Off
C.F.L.R.	Off

② Select the rating category you wish to follow

Program lock	
Mode	On
MPAA	Off
U.S.TV	Off
C.E.L.R.	Off
C.F.L.R.	Off

③ Select the rating to be locked

Example of "MPAA" (U.S. movie ratings)	
NR	No rating
G	General Audience: All ages admitted
PG	Parental Guidance Suggested
PG-13	Parents Strongly Cautioned: Inappropriate for children under 13
R	Restricted: Under 17 requires accompanying parent or adult guardian
NC-17	No one 17 and under admitted
X	Adults only

To get more information (p. 56)

VIERA CAST lock
 Locks VIERA CAST.
 Select "VIERA CAST" in ⑤ and set to "On".
 When you press VIERA CAST, the "VIERA CAST Lock" screen is displayed.
 Type the correct password to enter the Home screen.

Change password
 ■ To change the password
 ① In ④, select "Change password" and press OK
 ② Input the new 4-digit password twice

Lock	
Mode	Off
Channel	Off
Game	Off
Program	Off
VIERA CAST	Off

Change password
 Enter new password.
 01 - 9

- Note**
- This television is designed to support the "Downloadable U.S. Region Rating System" when available. (Available only in U.S.A.)
 - The Off rating is independent of other ratings.
 - When placing a lock on a specific-age-based-rating level, the Off rating and any other more restrictive ratings will also be blocked.

Editing and Setting Channels

The current channel settings can be changed according to your needs and reception conditions.

- 1 Display menu**
MENU
- 2 Select "Setup"**
Menu
Picture
Audio
Timer
Lock
VIERA Link
SD card
Closed caption
Setup
- 3 Select "ANT/Cable setup"**
Setup 1/2
Channel surf mode All
Language
Clock
ANT/Cable setup
Connected devices
Anti image retention
Reset to defaults
- 4 Select the function**
ANT/Cable setup
ANT in Cable
Auto program
Manual program
Signal meter
- 5 Set**
EXIT

■ Press to exit from a menu screen
EXIT

■ To reset the settings of setup menu

- 1 Select "Reset to defaults" in Setup menu (3) and press OK
- 2 Input your 4-digit password with number buttons
- 3 Select "YES" on the confirmation screen and press OK

Auto program
Set automatically

Manual program
Set manually

Signal meter
Check signal strength

Automatically searches and adds available channels to the memory.

- 1 Select "ANT in"
→ Select Cable or Antenna
Or select "Not used" (p. 16).

- 2 Select "Auto program"
ANT/Cable setup
ANT in Cable
Auto program
Manual program
Signal meter

- 3 Select a scanning mode (p. 17)

Auto program
All channels
Analog only
Digital only

- After the scanning is completed, select "Apply". (see below 5).
- All previously saved channels are erased.

Use this procedure when changing the channel setup or changing the channel display.

Also, use this to add or skip channels from the channel list manually.

You can select a channel tuning mode (Digital only/ Analog only) in "Channel surf mode" (p. 36)

- 1 Select "Edit"

Manual program
Edit Apply Cancel
Channel Caption Favorite Add
2 Yes
3 Yes
4 Yes
5 Yes

- 2 Select the item to be edited

Manual program
Edit Apply Cancel
Channel Caption Favorite Add
2 Yes
3 Yes
4 Yes

Caption Favorite Add

- Caption: Changes the station identifier
- Favorite: Registers channel to Favorite List
- Add: Adds or skips channels

Proceed to next page
Go back to previous page

- 3 Edit

- Caption

Edit CH caption
Channel 80-101
Caption

Select the station identifier (maximum 7 characters available)

- Favorite

Set favorite 1/3
1 26-1
2

Select the number
● Add
Press OK to select "Yes (add)" or "No (skip)"

- 4 Move cursor to channel number

Manual program
Edit Apply Cancel
Channel Caption Favorite Add
2 Yes
3 Yes

- 5 Select "Apply"

program
Apply Cancel
1 Caption Favorite Add
... .. Yes

To cancel the Edit

Manual program
Edit Apply Cancel
Channel Caption Favorite Add
2 Yes
3 Yes
4 Yes
5 Yes

Changes will be lost. Continue?
Yes No

Check the signal strength if an interference is found or freezing occurs on a digital image.

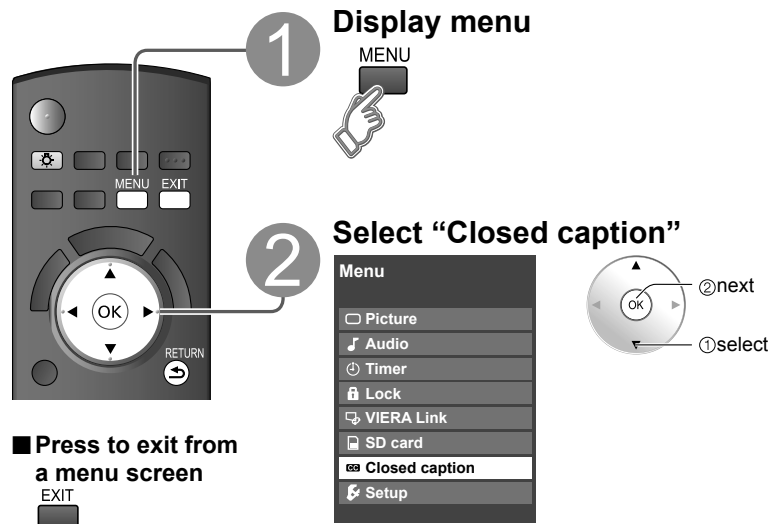
Signal meter
Channel 1-1
Tune manually
Signal strength
Current 30%
Peak level 45%

- If the signal is weak, check the antenna.
If no problem is found, consult your local dealer.

- Note**
- Not available if "Cable" is selected in "ANT in" (see above).
 - Available only for digital antenna channels.

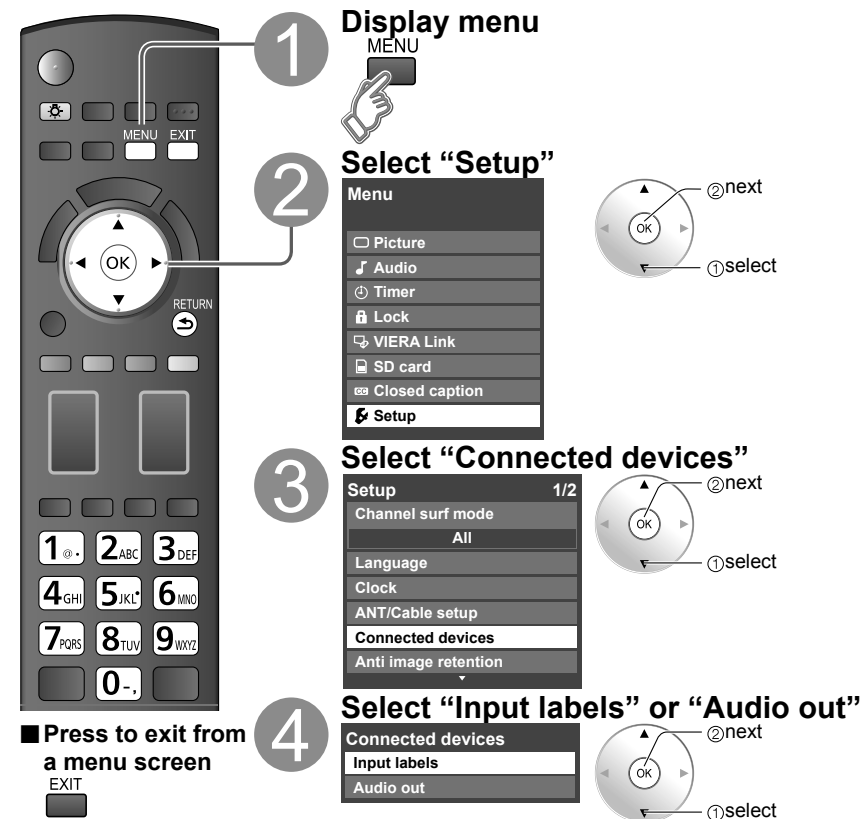
- If "Lock" (p. 48) is activated and "ANT/Cable setup" is selected, "Enter password." will be displayed.

Closed Caption



■ Press to exit from a menu screen
EXIT

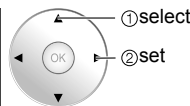
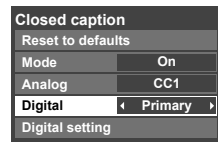
Input Labels/Audio out



■ Press to exit from a menu screen
EXIT

The television includes a built-in decoder that is capable of providing a text display of the audio. The program being viewed must be transmitting Closed caption (CC) information. (p. 57)

■ Select the item and set



- The settings in "Analog" or "Digital" depend on the broadcaster.

Mode Select "On" (when not using, select "Off").

Analog (Choose the Closed caption service of Analog broadcasting.)

CC1-4: Information related to pictures (Appears at bottom of screen)

T1-4: Textual information (Appears over entire screen)

Digital (The Digital Closed caption menu lets you configure the way you choose to view the digital captioning.)

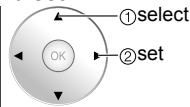
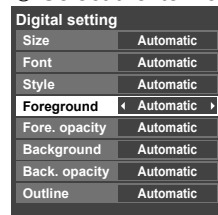
Select the setting.

- "Primary", "Second", "Service 3", "Service 4", "Service 5", "Service 6"

■ To make more in-depth display settings in digital programs

① Select "Digital setting" and press OK

② Select the item and set



- Size: Text size
- Font: Text font
- Style: Text style (Raised, Depressed, etc.)
- Foreground: Color of text
- Fore. opacity: Opacity of text
- Background: Color of text box
- Back. opacity: Opacity of text box
- Outline: Outline color of text (Identify the setting options on the screen.)

■ To reset the settings

Select "Reset to defaults" and press OK

Closed caption

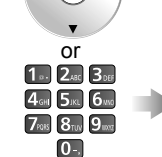
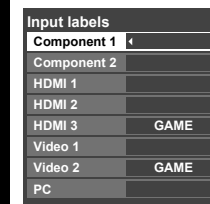
Display Closed caption

Input labels

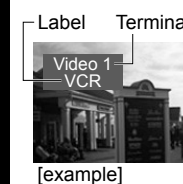
Display labels of connected devices

Devices connected to external input terminals can be labeled for easier identification during input selection. (In selecting input mode from p. 26 ②)

■ Select the terminal and label of the external equipment



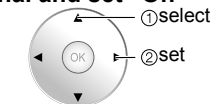
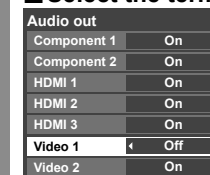
Switches Input mode from alphabetical to numeric



- Terminals: Component 1-2/HDMI 1-3/Video 1-2/PC
 - Label: [BLANK] SKIP/VCR/DVD/CABLE/SATELLITE/DVR/GAME/AUX/RECEIVER/COMPUTER/Blu-ray/CAMERA/DVD REC/HOME THTR/MONITOR/MEDIA CTR/MEDIA EXT/OTHER
- For the PC terminal, only "SKIP" is available.
- * If "SKIP" is selected, the INPUT button press will skip its input.
- Each selected label will be displayed on "Input select" screen. (p. 26)

To prevent howling, stops output of audio specified in this menu. (p. 36)

■ Select the terminal and set "Off"



Audio out

Stop output of the audio

Using Timer

The TV can automatically turn On/Off at the designated date and time.

- The Clock must be set before On time/Off time settings. (p. 18)
- The “Sleep” timer and “On / Off timer” will not work if the “Auto power on” (p. 36) is set.

1 Display menu

MENU

2 Select “Timer”

Menu

- Picture
- Audio
- Timer**
- Lock
- VIERA Link
- SD card
- Closed caption

②next
①select

3 Select the timer to set

Timer

- Sleep
- Timer 1
- Timer 2
- Timer 3
- Timer 4
- Timer 5

①select
②next

Sleep Turns Off automatically

Timer 1 Turns On/Off automatically (5 timers can be set.)

Timer 5

4 Set the timer

■ **To set “Sleep” (Off Timer)**
Set to shut the unit off after a pre-selected amount of time.

Sleep

Sleep (minutes) 60

● 0/30/60/90 (minutes)

set

■ **To set “Timer 1-5” (On/Off Timer)**
Select the item and set

Timer 1

Timer set	On
Inputs	TV
Channel	10-3
Day	7/6[FRI]
On time	1:15 AM
Off time	12:45 AM

1 2 3
4 5 6
7 8 9
0

or

①select
②set

LAST AM / PM

Clear

Timer set Timer setting (On/Off)

Inputs Select the inputs

Channel Select the channel

Day Select the day

SUN/MON/TUE/WED/THU/FRI/SAT
(displays the nearest future date)

MON-FRI/SAT-SUN/DAILY/Every SUN/Every MON/
Every TUE/Every WED/Every THU/Every FRI/ Every SAT

On time The time to turn On

Off time The time to turn Off

■ **Press to exit from a menu screen**
EXIT

■ **Press to return to the previous screen**
RETURN

Note

- The TV automatically turns Off after 90 minutes when turned On by the Timer. This operation will be cancelled if the Off time is selected or if a key is pressed.

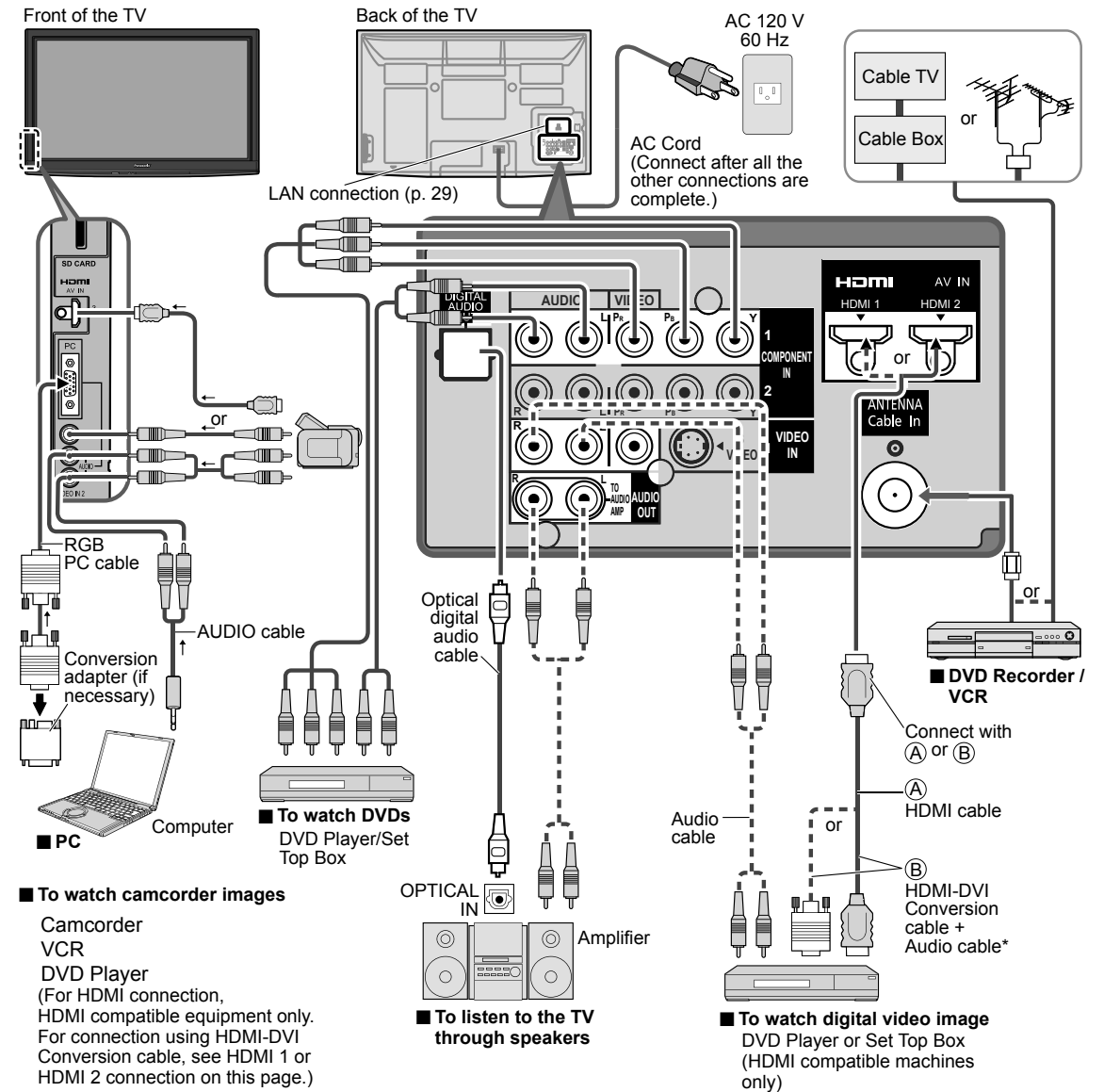
Recommended AV Connections

These diagrams show our recommendations on how to connect the TV unit to your various equipment.

For other connections, consult the instructions for each piece of equipment and its specifications.

For additional assistance, please visit our website at: www.panasonic.com

www.panasonic.ca



Note

- The audio input signals connected to a terminal disabled in “Audio out” (p. 53) cannot be output from “AUDIO OUT” terminals. However, audio output can be obtained from “DIGITAL AUDIO OUT” terminal.
- To prevent howling, set the “Audio out” setting when connecting the VCR with loop-connection. (p. 36, 53)

* Please see p. 34-35 for setup when using an external analog audio cable with an HDMI to DVI cable.

● Recommended AV Connections

● Using Timer

Advanced

Ratings List for Lock

“V-chip” technology enables you to lock channels or shows according to standard ratings set by the entertainment industry. (p. 49)

U.S. MOVIE RATINGS (MPAA)

NR	NO RATING (NOT RATED) AND NA (NOT APPLICABLE) PROGRAMS. Movie which has not been rated or where rating does not apply.
G	GENERAL AUDIENCES. All ages admitted.
PG	PARENTAL GUIDANCE SUGGESTED. Some material may not be suitable for children.
PG-13	PARENTS STRONGLY CAUTIONED. Some material may be inappropriate for children under 13.
R	RESTRICTED. Under 17 requires accompanying parent or adult guardian.
NC-17	NO ONE 17 AND UNDER ADMITTED.
X	ADULTS ONLY.

U.S. TV PROGRAMS RATINGS (U. S. TV)

Age-based Group	Age-based Ratings	Possible Content Selections	Description
NR (Not Rated)	TV-NR	<ul style="list-style-type: none"> Viewable Blocked 	Not Rated.
Youth	TV-Y	<ul style="list-style-type: none"> Viewable Blocked 	All children. The themes and elements in this program are specifically designed for a very young audience, including children from ages 2-6.
	TV-Y7	<ul style="list-style-type: none"> FV Blocked Viewable Blocked 	Directed to older children. Themes and elements in this program may include mild physical or comedic violence, or may frighten children under the age of 7.
Guidance	TV-G	<ul style="list-style-type: none"> Viewable Blocked 	General audience. It contains little or no violence, no strong language, and little or no sexual dialogue or situations.
	TV-PG	<ul style="list-style-type: none"> D,L,S,V (all selected) Any combination of D, L, S, V 	Parental guidance suggested. The program may contain infrequent coarse language, limited violence, some suggestive sexual dialogue and situations.
	TV-14	<ul style="list-style-type: none"> D,L,S,V (all selected) Any combination of D, L, S, V 	Parents strongly cautioned. This program may contain sophisticated themes, sexual content, strong language and more intense violence.
	TV-MA	<ul style="list-style-type: none"> L,S,V (all selected) Any combination of L, S, V 	Mature audiences only. This program may contain mature themes, profane language, graphic violence, and explicit sexual content.

FV: Fantasy/Cartoon Violence. V: Violence S: Sex L: Offensive Language D: Dialogue with sexual content.

CANADIAN ENGLISH RATINGS (C. E. L. R.)

E	Exempt - Exempt programming includes: news, sports, documentaries and other information programming, talk shows, music videos, and variety programming.
C	Programming intended for children under age 8. No offensive language, nudity or sexual content.
C8+	Programming generally considered acceptable for children 8 years and over. No profanity, nudity or sexual content.
G	General programming, suitable for all audiences.
PG	Parental Guidance suggested. Some material may not be suitable for children.
14+	Programming contains themes or content which may not be suitable for viewers under the age of 14. Parents are strongly cautioned to exercise discretion in permitting viewing by pre-teens and early teens.
18+	18+ years old. Programming restricted to adults. Contains constant violence or scenes of extreme violence.

CANADIAN FRENCH RATINGS (C. F. L. R.)

E	Exempt - Exempt programming.
G	General - Programming intended for audience of all ages. Contains no violence, or the violence content is minimal or is depicted appropriately.
8 ans+	8+ General - Not recommended for young children. Programming intended for a broad audience but contains light or occasional violence. Adult supervision recommended.
13 ans+	Programming may not be suitable for children under the age of 13 - Contains either a few violent scenes or one or more sufficiently violent scenes to affect them. Adult supervision strongly suggested.
16 ans+	Programming may not be suitable for children under the age of 16 - Contains frequent scenes of violence or intense violence.
18 ans+	Programming restricted to adults. Contains constant violence or scenes of extreme violence.

Caution

- The V-Chip system that is used in this set is capable of blocking “NR” programs (non rated, not applicable and none) as per FCC Rules Section 15.120(e)(2). If the option of blocking “NR” programs is chosen “unexpected and possibly confusing results may occur, and you may not receive emergency bulletins or any of the following types of programming:”
 - Emergency Bulletins (Such as EAS messages, weather warnings and others)
 - Locally originated programming • News • Political • Public Service Announcements • Religious • Sports • Weather

Technical Information

Closed caption (CC)

- For viewing the CC of digital broadcasting, set the aspect to FULL (If viewing with H-FILL, JUST, ZOOM or 4:3; characters might be cut off).
- The CC can be displayed on the TV if the receiver (such as a set-top box or satellite receiver) has the CC set On using the Component or HDMI connection to the TV.
- If the CC is set to On on both the receiver and TV when the signal is 480i (except for the HDMI connection), the CC may overlap on the TV.
- If a digital program is being output in analog format, the CC data will also be output in analog format.
- If the recorder or output monitor is connected to the TV, the CC needs to be set up on the recorder or output monitor.

Aspect Ratio (FORMAT)

Press the FORMAT button to cycle through the aspect modes. This lets you choose the aspect depending on the format of the received signal and your preference. (p. 20)
(e.g.: in case of 4:3 image)

● FULL

Enlarges the 4:3 image horizontally to the screen's side edges. (Recommended for anamorphic picture)

● JUST

Stretches to justify the 4:3 image to the four corners of the screen. (Recommended for normal TV broadcast)

● H-FILL

Enlarges the 4:3 image horizontally to the screen's side edges. The side edges of the image are cut off.

● 4:3

Standard (Note that “Image retention” of the side bar may occur from displaying it for a long time.)

● ZOOM

Enlarges the 4:3 image to the entire screen. (Recommended for Letter Box)

Note

- 480i (4:3), 480i (16:9), 480p (4:3), 480p (16:9): FULL, JUST, 4:3 or ZOOM
- 1080p / 1080i / 720p: FULL, H-FILL, JUST, 4:3 or ZOOM

Zoom adjustments

Vertical image position and size can be adjusted in “ZOOM”.

- Select “Zoom adjustments” on the “Picture” menu. (p. 34-35)
- V-position: Vertical position adjustment
- V-size: Vertical size adjustment



- To reset the aspect ratio → (OK)

Technical Information

Data format for SD Card browsing

- Photo:** Still images recorded with digital still cameras compatible with JPEG files of DCF* and EXIF** standards
 Data format-Baseline JPEG (Sub-sampling: 4:4:4, 4:2:2 or 4:2:0)
 Max. number of files - 9,999 Image resolution - 160 x 120 to 10,000,000
- Movie:** SD-Video Standard Ver. 1.2 [MPEG-2 (PS format)] and AVCHD Standard compatible files with an audio format that is either MPEG-1/Layer-2 format or Dolby Digital format
 (A modified data with a PC may not be displayed correctly.)
 * DCF (Design rule for camera file system): A Japan Electronics and Information Technology Industries Association's standard
 ** EXIF (Exchangeable Image File Format)

Note

- Format the card with the recording equipment.
- The picture may not appear correctly on this TV depending on the recording equipment used.
- Display may take some time when there are many files and folders.
- This function cannot display Motion JPEG and still image not DCF formatted (i.e. TIFF, BMP).
- Data modified with a PC may not be displayed.
- Images imported from a PC must be compatible with EXIF 2.0, 2.1 and 2.2.
- Partly degraded files might be displayed at a reduced resolution.
- All ".JPG" extension datas in the card will be read in Photo View Mode.
- The folder and file names may be different depending on the digital camera used.
- Do not use two-byte characters or other special codes.
- The card may become unusable with this TV if file or folder names are changed.
- For the suitable SD Memory Cards, please confirm the latest information on the following website.
<http://panasonic.jp/support/global/cs> (This site is in English only)

Cautions in handling SD Card:

- Do not remove the card while the unit is accessing data (this can damage card or unit).
- Do not touch the terminals on the back of the card.
- Do not subject the card to high pressure or impact.
- Insert the card in the correct direction (otherwise, card may be damaged).
- Electrical interference, static electricity or erroneous operation may damage the data or card.
- Back up the recorded data at regular intervals in case of deteriorated or damaged data or erratic operation of the unit. (Panasonic is not liable for any deterioration or damage of recorded data.)

SD Card warning messages

Message	Meaning
SD card slot is empty.	● The card is not inserted.
No photos/ No movies	● The card has no data or this type of data is not supported.
Cannot read file	● The file is broken or unreadable. ● The TV does not support the format.

VIERA Link™ "HDAVI Control™"

- HDMI connections to some Panasonic equipment allow you to interface automatically. (p. 38)
- This function may not work normally depending on the equipment condition.
 - The equipment can be operated by other remote controls with this function on even if TV is in Standby mode.
 - Image or sound may not be available for the first few seconds when the playback starts.
 - Image or sound may not be available for the first few seconds when Input mode is switched.
 - Volume function will be displayed when adjusting the volume of the equipment.
 - If you connect the same kind of equipment at once (for example: one DIGA to HDMI 1 / another DIGA to HDMI 2), VIERA Link™ is available for the terminal with the smaller number.
 - If you connect equipment that has "HDAVI Control 2" (or more) function to the TV with HDMI cable, the sound from DIGITAL AUDIO OUT terminal can be output as multi channel surround.
 - "HDAVI Control 4" is the newest standard (current as of December, 2008) for the HDAVI Control compatible equipment. This standard is compatible with the conventional HDAVI equipment.

HDMI connection

HDMI (high-definition multimedia interface) allows you to enjoy high-definition digital images and high-quality sound by connecting the TV unit and the devices.

HDMI-compatible equipment (*1) with an HDMI or DVI output terminal, such as a set-top box or a DVD player, can be connected to the HDMI connector using an HDMI compliant (fully wired) cable.

- HDMI is the world's first complete digital consumer AV interface complying with a non-compression standard.
- If the external equipment has only a DVI output, connect to the HDMI terminal via a DVI to HDMI adapter cable (*2).
- When the DVI to HDMI adapter cable is used, connect the audio cable to the audio input terminal.
- Audio settings can be made on the "HDMI 1 in", "HDMI 2 in" or "HDMI 3 in" menu screen. (p. 34)
 Applicable audio signal sampling frequencies (L.PCM): 48 kHz, 44.1 kHz, 32 kHz
 (*1): The HDMI logo is displayed on an HDMI-compliant device.
 (*2): Enquire at your local digital equipment retailer shop.

Caution

- Use with a PC is not assumed.
- All signals are reformatted before being displayed on the screen.
- If the connected device has an aspect adjustment function, set the aspect ratio to "16:9".
- These HDMI connectors are "type A".
- These HDMI connectors are compatible with HDCP (High-Bandwidth Digital Content Protection) copyright protection.
- A device having no digital output terminal may be connected to the input terminal of either "COMPONENT", "S VIDEO", or "VIDEO" to receive analog signals.
- The HDMI input terminal can be used with only the following image signals: 480i, 480p, 720p, 1080i and 1080p. Match the output setting of the digital device.
- For details of the applicable HDMI signals, see p. 60.

DIGITAL AUDIO OUT terminals

You can enjoy your home theater by connecting a Dolby Digital (5.1 channel) decoder and "Multi Channel" amplifier to the DIGITAL AUDIO OUT terminals.

Caution

- Depending on your DVD player and DVD-Audio software the copyright protection function may operate and disable optical output.
- When an ATSC channel is selected, the output from the DIGITAL AUDIO OUT jack will be Dolby Digital. When an NTSC channel is selected, the output will be PCM.
- When playing movie on SD Card Movie player, when the sound has been recorded in Dolby Digital, the output from the DIGITAL AUDIO OUT terminal will be Dolby Digital. When the sound is recorded in the other formats, the output will be PCM. See pages 48-49 for more information

Picture mode

- Vivid: Provides enhanced picture contrast and sharpness for viewing in a well-lit room.
- Standard: Recommended for normal viewing conditions with subdued room lighting.
- THX: Faithfully reproduces the image quality that the movie makers intended in order to provide the ultimate cinematic experience at home.
- Game: For playing video game. This mode will be set automatically if "GAME" is selected from Input label setting (p. 53)
- Custom (Photo): Customizes each item according to your taste. Photo is displayed in JPEG menu.

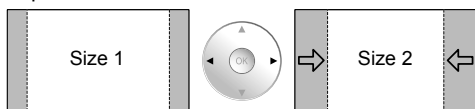
Note

- Picture mode will be automatically set to "Standard" if you change the Input label from "GAME" to other labels.
- Picture mode will be automatically set to "Game" if you change from an Input label other than "GAME" to "GAME" label.

Technical Information (Continued)

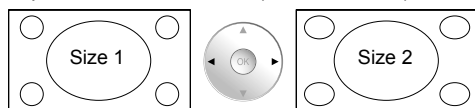
H size

- Aspect Ratio: 4:3



- The width will be decreased on both sides to reduce noise.

- Aspect Ratio: FULL/JUST(H-FILL/ZOOM)



- The width will be increased on both sides to reduce noise.

See pages 34-35 for more information

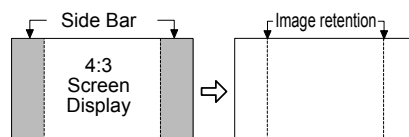
4:3 side bars

Do not display a picture in 4:3 mode for an extended period, as this can cause "Image retention" to remain on either or both sides of the display field.

To reduce the risk of such "Image retention", change the brightness of the side bars.

See pages 36-37 for more information

- The side bar may flash (alternate black/white) depending on the picture. Using Cinema mode will reduce such flashing (See below).



Scrolling bar

Scrolling bar: To prevent "Image retention", scrolls white vertical bar from top to bottom on a black screen.

- Press any key except the POWER key to return to previous screen.
 - You will return to the previous screen if no key operation has been performed for 15 minutes.
- See pages 36-37 for more information

[Scrolling bar]



Input signal that can be displayed

* Mark: Applicable input signal for Component (Y, P_B, P_R), HDMI and PC

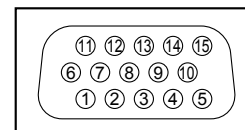
	horizontal frequency (kHz)	vertical frequency (Hz)	COMPONENT	HDMI	PC
525 (480) / 60i	15.73	59.94	*	*	
525 (480) / 60p	31.47	59.94	*	*	
750 (720) / 60p	45.00	59.94	*	*	
1,125 (1,080) / 60i	33.75	59.94	*	*	
1,125 (1,080) / 60p	67.43	59.94		*	
1,125 (1,080) / 60p	67.50	60.00		*	
1,125 (1,080) / 24p	26.97	23.98		*	
1,125 (1,080) / 24p	27.00	24.00		*	
640 × 400 @70	31.47	70.08			*
640 × 480 @60	31.47	59.94			*
Macintosh 13" (640 × 480)	35.00	66.67			*
640 × 480 @75	37.50	75.00			*
852 × 480 @60	31.47	59.94			*
800 × 600 @60	37.88	60.32			*
800 × 600 @75	46.88	75.00			*
800 × 600 @85	53.67	85.08			*
Macintosh 16" (832 × 624)	49.73	74.55			*
1,024 × 768 @60	48.36	60.00			*
1,024 × 768 @70	56.48	70.07			*
1,024 × 768 @75	60.02	75.03			*
1,024 × 768 @85	68.68	85.00			*
Macintosh 21" (1,152 × 870)	68.68	75.06			*
1,280 × 1,024 @60	63.98	60.02			*
1,366 × 768 @60	48.36	60.00			*

Note

- Signals other than above may not be displayed properly.
- The above signals are reformatted for optimal viewing on your display.

PC Input Terminals Connection

- Computer signals which can be input are those with a horizontal scanning frequency of 15 to 110 kHz and vertical scanning frequency of 48 to 120 Hz. (However, the image will not be displayed properly if the signals exceed 1,200 lines.)
- Some PC models cannot be connected to the set.
- There is no need to use an adapter for computers with IBM PC/AT compatible D-sub 15P terminal.
- The maximum resolution: 1,280 × 1,024
- If the display resolution exceeds these maximums, it may not be possible to show fine detail with sufficient clarity.
- Signal Names for D-sub 15P Connector



Pin Layout for PC Input Terminal

Pin No.	Signal Name	Pin No.	Signal Name	Pin No.	Signal Name
①	R	⑥	GND (Ground)	⑪	NC (not connected)
②	G	⑦	GND (Ground)	⑫	NC
③	B	⑧	GND (Ground)	⑬	HD/SYNC
④	NC (not connected)	⑨	NC (not connected)	⑭	VD
⑤	GND (Ground)	⑩	GND (Ground)	⑮	NC

Care and Cleaning

First, unplug the Power cord plug from the wall outlet.

Display panel

The front of the display panel has been specially treated. Wipe the panel surface gently using only a cleaning cloth or a soft, lint-free cloth.

- If the surface is particularly dirty, soak a soft, lint-free cloth in diluted mild liquid dish soap (1 part mild liquid dish soap diluted by 100 times the amount of water) and then wring the cloth to remove excess liquid. Use this cloth to wipe the surface of the display panel, then wipe it evenly with a dry cloth of the same type until the surface is dry.
- Do not scratch or hit the surface of the panel with fingernails or other hard objects. Furthermore, avoid contact with volatile substances such as insect sprays, solvents, and thinner; otherwise, the quality of the surface may be adversely affected.

Cabinet

If the cabinet becomes dirty, wipe it with a soft, dry cloth.

- If the cabinet is particularly dirty, soak the cloth in a weak mild liquid dish soap and then wring the cloth dry. Use this cloth to wipe the cabinet and then wipe it dry with a dry cloth.
- Do not allow any mild liquid dish soap to come into direct contact with the surface of the Plasma TV. If water droplets get inside the unit, operating problems may result.
- Avoid contact with volatile substances such as insect sprays, solvents, and thinner; otherwise, the quality of the cabinet surface may be adversely affected or the coating may peel off. Furthermore, do not leave it for long periods in contact with articles made from rubber or PVC.

Pedestal

- Cleaning

Wipe the surfaces with a soft, dry cloth. If the unit is particularly dirty, clean it using a cloth soaked with water to which a small amount of mild liquid dish soap has been added and then wipe with a dry cloth. Do not use products such as solvents, thinner, or household wax for cleaning, as they can damage the surface coating. (If using a chemically-treated cloth, follow the instructions supplied with the cloth.)

- Do not attach sticky tape or labels, as they can make the surface of the pedestal dirty. Do not allow long-term contact with rubber, vinyl products, or the like. (Doing so will cause deterioration.)

FAQ

Before requesting service or assistance, please follow these simple guides to resolve the problem. If the problem still persists, please contact your local Panasonic dealer or Panasonic Service Center for assistance.

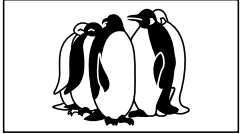
For details (p. 66, 67)

For additional assistance, please contact us via the website at:

www.panasonic.com/contactinfo

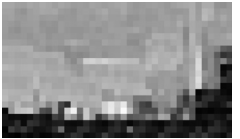
www.panasonic.ca

White spots or shadow images (noise)



- Check the position, direction, and connection of the antenna.

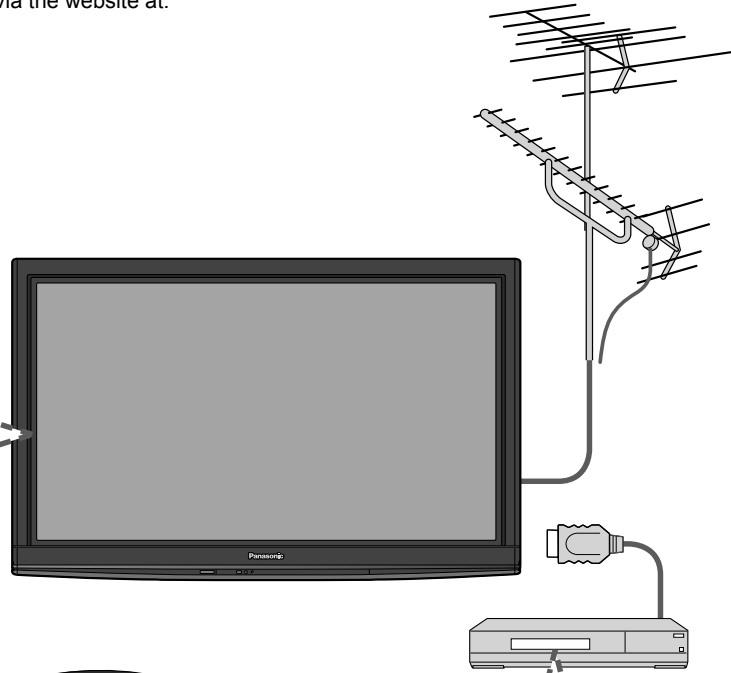
Interference or frozen digital channels (intermittent sound)



- Change the direction of antenna for digital channels.
- Check "Signal meter" (p. 51). If the signal is weak, check the antenna and consult your local dealer.

The remote control does not work

- Are the batteries installed correctly? (p. 8)
- Are the batteries new?



Pictures from external equipment are distorted when the unit is connected via HDMI

- Is the HDMI cable connected properly? (p. 39, 55)
- Turn Off the TV unit and equipment, then turn them On again.
- Check an input signal from the equipment. (p. 60)
- Use equipment compliant with EIA/CEA-861/861B.

When the channel is changed on an STB that is connected with HDMI, "HDMI" may be displayed on the top left of the screen

- This is not a malfunction.

Recording does not start immediately

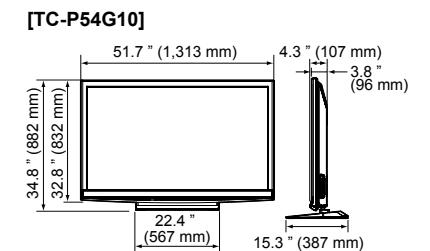
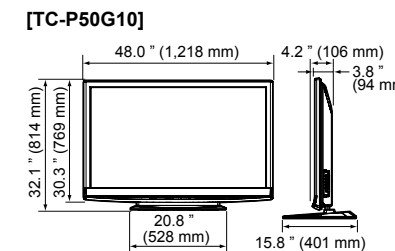
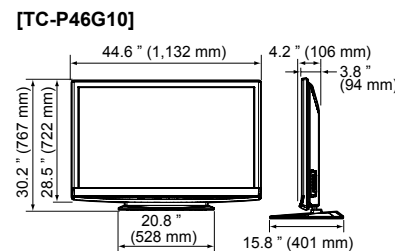
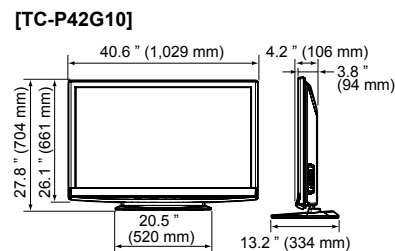
- Check the settings of the recorder. For details, read the manual of the recorder.

If there is a problem with your TV, please refer to the table below to determine the symptoms, then carry out the suggested check. If this does not solve the problem, please contact your local Panasonic dealer, quoting the model number and serial number (both found on the rear of the TV).

	Problem	Actions
Screen	"Press any button to return" moves on the screen	<ul style="list-style-type: none"> ● The function to prevent "Image retention" is activated. (Not a faulty symptom) ● The screen saver is activated if the TV unit is not operated for a certain time in SD mode. ● "Image retention" (p. 7)
	Some spots remain bright or dark	<ul style="list-style-type: none"> ● The Plasma panel is made up of a few million pixels and is produced with advanced technology through an intricate process. Sometimes a few pixels may be bright or dark. These pixels do not indicate a defective panel and will have no impact on the performance of the TV.
	Chaotic image, noisy	<ul style="list-style-type: none"> ● Check nearby electrical products (car or motorcycle ignition systems, fluorescent lamp, etc.)
	No image can be displayed	<ul style="list-style-type: none"> ● Check Picture menu (p. 34) ● Check the cable connections. (p. 11-14) ● Check that the correct input has been selected. (p. 26)
	Only spots are displayed instead of images	<ul style="list-style-type: none"> ● Check the channel settings. (p. 50) ● Check the antenna cables.
	Neither image nor sound is produced	<ul style="list-style-type: none"> ● Is the AC power cord plugged into the outlet? ● Is the TV unit turned On? ● Check Picture menu (p. 34) and volume. ● Check the AV cable connections. (p. 11-14) ● Check that the correct input has been selected. (p. 26)
Sound	Black Box appears	<ul style="list-style-type: none"> ● Change settings of Closed caption (CC). (p. 57)
	No sound is produced	<ul style="list-style-type: none"> ● Are the speakers' cables connected correctly? (p. 55) ● Is "Sound Mute" active? (p. 15) ● Is the volume set to the minimum? ● Is "TV speakers" set to "Off"? (p. 34) ● Change "SAP" settings. (p. 19) ● Check "HDMI 1 in", "HDMI 2 in" or "HDMI 3 in" settings. (p. 34)
	Sound is unusual	<ul style="list-style-type: none"> ● Set "SAP" setting to "Stereo" or "Mono." ● Check the HDMI device connected to the unit. ● Set the audio setting of the HDMI device to "Linear PCM." ● If digital sound connection has a problem, select analog sound connection.
	Unknown sound heard	<ol style="list-style-type: none"> 1- Changes in the temperature and humidity of the room may cause the TV's cabinet to expand or contract and produce metallic sounds. This is not a sign of faulty operation or a malfunction. 2- The TV may have a cooling fan that makes a soft whir. This is not a sign of faulty operation or a malfunction. 3- When the TV is powered on, an electrical component in the TV activates producing a tick/click sound. This is not a sign of faulty operation or a malfunction. 4- Electrical circuits are active while the TV set is on. This is not a sign of faulty operation or a malfunction.
	1- Sounds from TV cabinet	
	2- Whirring sound	
TV set	3- Tick/Click sound	
	4- Buzzing sound	
	Parts of the TV set become hot.	<ul style="list-style-type: none"> ● Even when the temperature of parts of the front, top and rear panels has risen, these temperature rises will not pose any problems in terms of performance or quality.

Specifications

		TC-P42G10	TC-P46G10
Power Source		AC 120 V, 60 Hz	
Power Consumption	Maximum	490 W	531 W
	Standby condition	0.2 W	0.2 W
Plasma Display panel	Drive method	AC type	
	Aspect Ratio	16:9	
	Visible screen size (W × H × Diagonal)	42" class (41.6 inches measured diagonally) 36.2" × 20.4" × 41.6" (921 mm × 518 mm × 1,057 mm)	46" class (46.0 inches measured diagonally) 40.1" × 22.5" × 46.0" (1,019 mm × 573 mm × 1,169 mm)
	(No. of pixels)	2,073,600 (1,920 (W) × 1,080 (H)) [5,760 × 1,080 dots]	
Sound	Audio Output 20 W [10 W + 10 W] (10 % THD)		
PC signals		VGA, SVGA, XGA, WXGA, SXGA Horizontal scanning frequency 31 - 69 kHz Vertical scanning frequency 59 - 86 Hz	
Channel Capability (Digital/Analog)		VHF/ UHF: 2 - 69, CATV: 1 - 135	
Operating Conditions		Temperature: 32 °F – 104 °F (0 °C – 40 °C) Humidity: 20 % – 80 % RH (non-condensing)	
Connection Terminals	VIDEO IN 1	VIDEO: RCA PIN Type × 1 S-VIDEO: Mini DIN 4-pin AUDIO L-R: RCA PIN Type × 2	1.0 V [p-p] (75 Ω) Y: 1.0 V [p-p] (75 Ω) C: 0.286 V [p-p] (75 Ω) 0.5 V [rms]
	VIDEO IN 2	VIDEO: RCA PIN Type × 1 AUDIO L-R: RCA PIN Type × 2	1.0 V [p-p] (75 Ω) 0.5 V [rms]
	COMPONENT IN 1-2	Y: 1.0 V [p-p] (including synchronization) Pb, Pr: ±0.35 V [p-p] AUDIO L-R: RCA PIN Type × 2	0.5 V [rms]
	HDMI 1-3	TYPE A Connector × 3 ● This TV supports "HDAVI Control 4" function.	
	PC	D-SUB 15PIN: R,G,B / 0.7 V [p-p] (75 Ω) HD, VD / 1.0 - 5.0 V [p-p] (high impedance)	
	LAN (for VIERA CAST IPTV)	RJ45 (10BASE-T/100BASE-TX)	
	Card slot	SD CARD slot × 1	
	AUDIO OUT	AUDIO L-R: RCA PIN Type × 2 0.5 V [rms]	
	DIGITAL AUDIO OUT	PCM / Dolby Digital, Fiber Optic	
FEATURES		3D Y/C FILTER CLOSED CAPTION V-Chip IPTV (VIERA CAST) Photo viewer Movie player HDAVI Control 4	
Dimensions (W × H × D)	Including pedestal	40.6" × 27.8" × 13.2" (1,029 mm × 704 mm × 334 mm)	44.6" × 30.2" × 15.8" (1,132 mm × 767 mm × 401 mm)
	TV Set only	40.6" × 26.1" × 3.8 (4.2)" (1,029 mm × 661 mm × 94 (106) mm)	44.6" × 28.5" × 3.8 (4.2)" (1,132 mm × 722 mm × 94 (106) mm)
Mass	Including pedestal	59.6 lb. (27.0 kg)	68.4 lb. (31.0 kg)
	TV Set only	55.2 lb. (25.0 kg)	64.0 lb. (29.0 kg)



Note

● Design and Specifications are subject to change without notice. Mass and Dimensions shown are approximate.

		TC-P50G10	TC-P54G10
Power Source		AC 120 V, 60 Hz	
Power Consumption	Maximum	589 W	604 W
	Standby condition	0.2 W	0.2 W
Plasma Display panel	Drive method	AC type	
	Aspect Ratio	16:9	
	Visible screen size (W × H × Diagonal)	50" class (49.9 inches measured diagonally) 43.5" × 24.4" × 49.9" (1,105 mm × 622 mm × 1,268 mm)	54" class (54.1 inches measured diagonally) 47.1" × 26.5" × 54.1" (1,198 mm × 673 mm × 1,374 mm)
	(No. of pixels)	2,073,600 (1,920 (W) × 1,080 (H)) [5,760 × 1,080 dots]	
Sound	Audio Output 20 W [10 W + 10 W] (10 % THD)		
PC signals		VGA, SVGA, XGA, WXGA, SXGA Horizontal scanning frequency 31 - 69 kHz Vertical scanning frequency 59 - 86 Hz	
Channel Capability (Digital/Analog)		VHF/ UHF: 2 - 69, CATV: 1 - 135	
Operating Conditions		Temperature: 32 °F – 104 °F (0 °C – 40 °C) Humidity: 20 % – 80 % RH (non-condensing)	
Connection Terminals	VIDEO IN 1	VIDEO: RCA PIN Type × 1 S-VIDEO: Mini DIN 4-pin AUDIO L-R: RCA PIN Type × 2	1.0 V [p-p] (75 Ω) Y: 1.0 V [p-p] (75 Ω) C: 0.286 V [p-p] (75 Ω) 0.5 V [rms]
	VIDEO IN 2	VIDEO: RCA PIN Type × 1 AUDIO L-R: RCA PIN Type × 2	1.0 V [p-p] (75 Ω) 0.5 V [rms]
	COMPONENT IN 1-2	Y: 1.0 V [p-p] (including synchronization) Pb, Pr: ±0.35 V [p-p] AUDIO L-R: RCA PIN Type × 2	0.5 V [rms]
	HDMI 1-3	TYPE A Connector × 3 ● This TV supports "HDAVI Control 4" function.	
	PC	D-SUB 15PIN: R,G,B / 0.7 V [p-p] (75 Ω) HD, VD / 1.0 - 5.0 V [p-p] (high impedance)	
	LAN (for VIERA CAST IPTV)	RJ45 (10BASE-T/100BASE-TX)	
	Card slot	SD CARD slot × 1	
	AUDIO OUT	AUDIO L-R: RCA PIN Type × 2 0.5 V [rms]	
	DIGITAL AUDIO OUT	PCM / Dolby Digital, Fiber Optic	
FEATURES		3D Y/C FILTER CLOSED CAPTION V-Chip IPTV (VIERA CAST) Photo viewer Movie player HDAVI Control 4	
Dimensions (W × H × D)	Including pedestal	48.0" × 32.1" × 15.8" (1,218 mm × 814 mm × 401 mm)	51.7" × 34.8" × 15.3" (1,313 mm × 882 mm × 387 mm)
	TV Set only	48.0" × 30.3" × 3.8 (4.2)" (1,218 mm × 769 mm × 94 (106) mm)	51.7" × 32.8" × 3.8 (4.3)" (1,313 mm × 832 mm × 96 (107) mm)
Mass	Including pedestal	75.0 lb. (34.0 kg)	90.4 lb. (41.0 kg)
	TV Set only	70.6 lb. (32.0 kg)	83.8 lb. (38.0 kg)

Note

● Design and Specifications are subject to change without notice. Mass and Dimensions shown are approximate.

Limited Warranty (for U.S.A. and Puerto Rico only)

PANASONIC CONSUMER ELECTRONICS COMPANY,
DIVISION OF
PANASONIC CORPORATION OF NORTH AMERICA
One Panasonic Way
Secaucus, New Jersey 07094

Panasonic Plasma Television Limited Warranty

Limited Warranty Coverage

If your product does not work properly because of a defect in materials or workmanship, Panasonic Consumer Electronics Company (referred to as "the warrantor") will, for the length of the period indicated on the chart below, which starts with the date of original purchase ("Limited Warranty period"), at its option either (a) repair your product with new or refurbished parts, or (b) replace it with a new or a refurbished product. The decision to repair or replace will be made by the warrantor.

PLASMA TV CATEGORIES	PARTS	LABOR	SERVICE
Up to 37" (diagonal)	1 (ONE) YEAR	1 (ONE) YEAR	Carry-In
42" (diagonal) and larger			On-Site

During the "Labor" Limited Warranty period there will be no charge for labor. During the "Parts" Limited Warranty period, there will be no charge for parts.

You must carry-in your product or arrange for on-site service during the Limited Warranty period. If non-rechargeable batteries are included, they are not warranted. This Limited Warranty only applies to products purchased and serviced in the United States or Puerto Rico. This Limited Warranty is extended only to the original purchaser and only covers product purchased as new. A purchase receipt or other proof of the original purchase date is required for Limited Warranty service.

On-Site or Carry-in Service

For On-Site or Carry-In Service in the United States and Puerto Rico call 1-877-95-VIERA (1-877-958-4372).

On-site service where applicable requires clear, complete and easy access to the product by the authorized servicer and does not include removal or re-installation of an installed product. It is possible that certain on-site repairs will not be completed on-site, but will require that the product or parts of the product, at the servicer's discretion be removed for shop diagnosis and/or repair and then returned.

Limited Warranty Limits And Exclusions

This Limited Warranty ONLY COVERS failures due to defects in materials or workmanship, and DOES NOT COVER normal wear and tear or cosmetic damage, nor does it cover markings or retained images on the glass panel resulting from viewing fixed images (including, among other things, non-expanded standard 4:3 pictures on wide screen TV's, or onscreen data in a stationary and fixed location). The Limited Warranty ALSO DOES NOT COVER damages which occurred in shipment, or failures which are caused by products not supplied by the warrantor, or failures which result from accidents, misuse, abuse, neglect, bug infestation, mishandling, misapplication, alteration, faulty installation, set-up adjustments, misadjustment of consumer controls, improper maintenance, power line surge, lightning damage, modification, or commercial use (such as in a hotel, office, restaurant, or other business), rental use of the product, service by anyone other than a Factory Service Center or other Authorized Servicer, or damage that is attributable to acts of God.

THERE ARE NO EXPRESS WARRANTIES EXCEPT AS LISTED UNDER "LIMITED WARRANTY COVERAGE". THE WARRANTOR IS NOT LIABLE FOR INCIDENTAL OR CONSEQUENTIAL DAMAGES RESULTING FROM THE USE OF THIS PRODUCT, OR ARISING OUT OF ANY BREACH OF THIS LIMITED WARRANTY. (As examples, this excludes damages for lost time, cost of having someone remove or re-install an installed unit if applicable, or travel to and from the servicer. The items listed are not exclusive, but are for illustration only.) **ALL EXPRESS AND IMPLIED WARRANTIES, INCLUDING THE LIMITED WARRANTY OF MERCHANTABILITY, ARE LIMITED TO THE PERIOD OF THE LIMITED WARRANTY.**

Some states do not allow the exclusion or limitation of incidental or consequential damages, or limitations on how long an implied Limited Warranty lasts, so the exclusions may not apply to you.

This Limited Warranty gives you specific legal rights and you may also have others rights which vary from state to state. If a problem with this product develops during or after the Limited Warranty period, you may contact your dealer or Service Center. If the problem is not handled to your satisfaction, then write to the warrantor's Consumer Affairs Department at the addresses listed for the warrantor.

PARTS AND SERVICE (INCLUDING COST OF AN ON-SITE SERVICE CALL, WHERE APPLICABLE) WHICH ARE NOT COVERED BY THIS LIMITED WARRANTY ARE YOUR RESPONSIBILITY.

Customer Services Directory (for U.S.A. and Puerto Rico)

Customer Services Directory (United States and Puerto Rico)

Obtain Product Information and Operating Assistance; locate your nearest Dealer or Service Center; purchase Parts and Accessories; or make Customer Service and Literature requests by visiting our Web Site at:

<http://www.panasonic.com/help>

or, contact us via the web at:

<http://www.panasonic.com/contactinfo>

You may also contact us directly at:

1-877-95-VIERA (958-4372)

Monday-Friday 9 am-9 pm; Saturday-Sunday 10 am-7 pm, EST.

■ For hearing or speech impaired TTY users, TTY: 1-877-833-8855

Accessory Purchases (United States and Puerto Rico)

Purchase Parts, Accessories and Instruction Books on line for all Panasonic Products by visiting our Web Site at:

<http://www.pstc.panasonic.com>

or, send your request by E-mail to:

npcparts@us.panasonic.com

You may also contact us directly at:

1-800-332-5368 (Phone) 1-800-237-9080 (Fax Only) (Monday - Friday 9 am to 9 pm, EST.)

Panasonic Service and Technology Company

20421 84th Avenue South,

Kent, WA 98032

(We Accept Visa, MasterCard, Discover Card, American Express, and Personal Checks)

■ For hearing or speech impaired TTY users, TTY: 1-866-605-1277

Limited Warranty (for Canada)

**Panasonic Canada Inc.
PANASONIC PRODUCT - LIMITED WARRANTY**

Panasonic Canada Inc. warrants this product to be free from defects in material and workmanship and agrees to remedy any such defect for a period as stated below from the date of original purchase.

Viera TV (42" & over)	In-home service	One (1) year, parts (including panel) and labour.
Viera TV (under 42")	Carry-in service	One (1) year, parts (including panel) and labour.

In-home Service will be carried out only to locations accessible by roads and within 50 km of an authorized Panasonic service facility.

LIMITATIONS AND EXCLUSIONS

This warranty does not apply to products purchased outside Canada or to any product which has been improperly installed, subjected to usage for which the product was not designed, misused or abused, damaged during shipping, or which has been altered or repaired in any way that affects the reliability or detracts from the performance, nor does it cover any product which is used commercially. Dry cell batteries are also excluded from coverage under this warranty.

This warranty is extended to the original end user purchaser only. A purchase receipt or other proof of date of original purchase is required before warranty service is performed.

THIS EXPRESS, LIMITED WARRANTY IS IN LIEU OF ALL OTHER WARRANTIES, EXPRESS OR IMPLIED, INCLUDING ANY IMPLIED WARRANTIES OF MERCHANTABILITY AND FITNESS FOR A PARTICULAR PURPOSE. IN NO EVENT WILL PANASONIC CANADA INC. BE LIABLE FOR ANY SPECIAL, INDIRECT OR CONSEQUENTIAL DAMAGES.

In certain instances, some jurisdictions do not allow the exclusion or limitation of incidental or consequential damages, or the exclusion of implied warranties, so the above limitations and exclusions may not be applicable.

In-home service requires clear, complete and easy access to the product by the Authorized Servicentre and does not include removal or re-installation of an installed product. If removal is required to service the product, it will be at the discretion of the Servicentre and in no event will Panasonic Canada Inc. or the Servicentre be liable for any special, indirect or consequential damages.

WARRANTY SERVICE

For product operation and information assistance, please contact:

Our Customer Care Centre: 1-800 #: 1-866-330-0014
Email link: www.vieraconcierge.ca

FOR PRODUCT REPAIRS, please contact Viera Customer Care Agent using the above contact info.

IF YOU SHIP THE PRODUCT TO A SERVICENTRE

Carefully pack and send prepaid, adequately insured and preferably in the original carton. Include details of the defect claimed, and proof of date of original purchase.

.....

.....

.....

.....

.....

.....

.....

.....

.....

.....

.....

.....

.....

.....

.....

.....

.....

.....

.....

.....

.....