



OTTAVA™ *f*

PREMIUM ALL-IN-ONE MUSIC SYSTEM

SC-C70MK2

Rediscover Music

Technics

Keep your life immersed in music.

When you love music sound quality is important.

And being immersed in exquisite sound is a special kind of luxury.

Consider the SC-C70MK2. It has the power to unite the quality of your music with the quality of your life.



Remastered Sound Quality.

Expansive and Rich Soundscape.

Newly Developed Speaker Units & Acoustic Lens

The 8-cm woofer unit offers significantly better basic characteristics as a result of various improvements made, such as the reduced weight of the voice coil, enhanced airflow and increased rigidity of the diaphragm. The woofer provides superb response and sound clarity to reproduce mid- and high-frequency sound comfortable to the ear. The high-res-ready 2-cm dome tweeter unit features a lighter silk diaphragm to provide beautiful lingering sound. What's more, the acoustic lens is optimised for the new tweeter shape and enhances the expansiveness of reproduced sound.



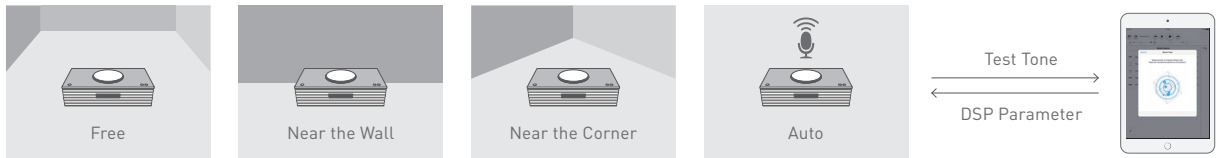
JENO Engines

In order to faithfully reproduce the information of rich sounds with the 2.1ch configuration, three "JENO Engine" full digital amplifier units have been equipped. In addition to utilising the excellent processing capacity of the three units and faithfully driving the left and right channels and subwoofer, "Space Tune", which optimises the sound quality depending on the installation status, has been realised.

Realises an Optimal Sound Space According to the Environment of the Room and Installation Location

Space Tune™

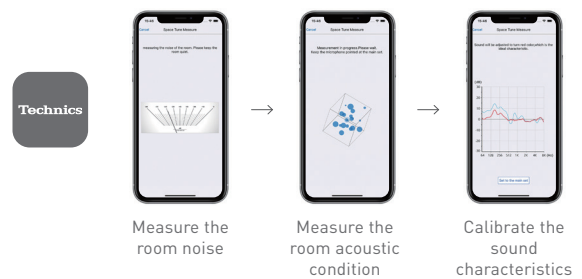
The SC-C70MK2 features Space Tune™ Auto to achieve optimally balanced sound easily with the press of a button. This function measures test tones played through a mic that is built into the SC-C70MK2 to analyse the distance to walls and the effect of reflections. It then automatically optimises the sound field. In addition, the Space Tune™ function includes 3 presets (Free, Near the Wall, and Near the Corner) for easy setting, and uses a Technics Audio Center app to precisely adjust the sound quality to the listening position.



iOS device calibration is available for more precise adjustment

Measure room acoustic conditions by using microphone integrated in iOS devices.

Tune DSP parameters to optimise acoustic performance.

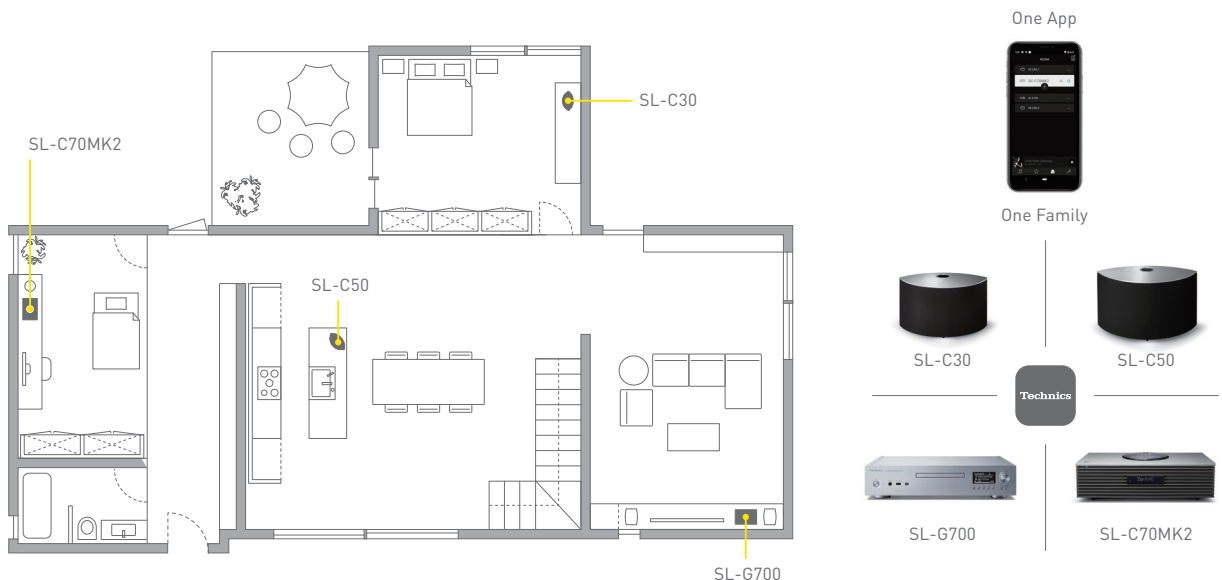


Comfortable Enjoyment of a Greater Range of Music Content and a Diversity of Connectivity

Multi-room

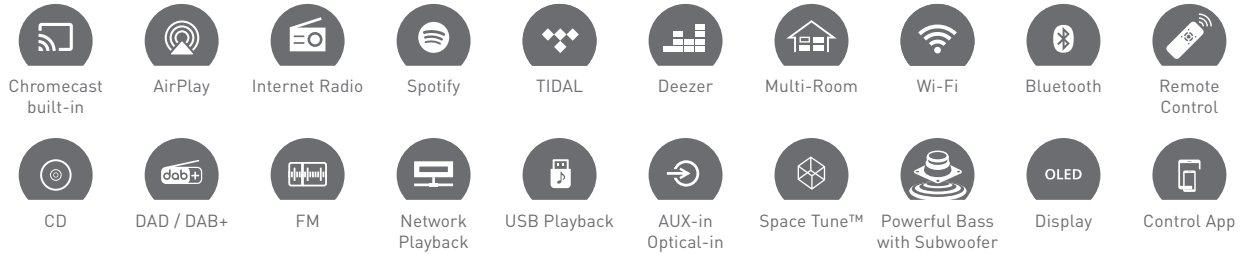
With a number of Chromecast built-in speakers, the variety of music streaming services can be played in several rooms, or different music can be played from room to room*. In addition, if you use Technics Audio Center app and have another app compatible Technics devices, you can also enjoy other music source in multi-room such as Bluetooth, AUX, Optical input, USB, Internet radio and also OTTAVA™ f SC-C70MK2 compatible streaming music.

*The Google Home App is required.



Complete Compatibility

In addition to CDs and radio, this model is newly compatible with Chromecast built-in, and supports a wide range of music streaming services. Furthermore, it is also compatible with Spotify Connect, Deezer and Internet radio. It is also compatible AirPlay 2, Bluetooth Wi-Fi, network playback, USB memory playback and analogue/optical input to allow you to enjoy various sound sources with one unit. The UI of our iOS/Android smartphone app, "Technics Audio Center App" has also been redesigned, making it easier to use than ever before.



Favourite Function

Up to 9 presets can be set on the main unit, such as favourite internet radio stations, a DEEZER playlist, and USB songs. This makes it possible to listen to your favourite music without even starting up an app.

Functional beauty that has
been further refined

Following the elegant design of the previous C70 by combining high sound quality and a sophisticated design. The C70MK2 features a dark silver color to create an even more refined design. Furthermore, an all-black variation has been added. The more you use it, the more your enjoyment of experiencing music will deepen.



A	B	A. Premium Material
	C	B. Elegant CD mechanism
	D	C. Aluminum Touch key
		D. Louver Front Grille

OTTAVA™ *f*

PREMIUM ALL-IN-ONE MUSIC SYSTEM

SC-C70MK2



Specification

Accurate Digital Technology

JENO Engine (Jitter Elimination and Noise-shaping Optimization)
Load Adaptive Phase Calibration (w/o Calibration function)
Space Tune™
Twin Power Supply Circuit System
Re-master

Noiseless Signal Technology

Twin Power Supply Circuit System
Optimally Activated Circuit System
CD High-Res Re-master

Emotive Acoustic Technology

Acoustic Lens and Louver
Dual Bass Reflex Port

Output Power

Front speaker: 30 W + 30 W (1 kHz, T.H.D. 1.0 %, 6Ω, 20 kHz LPF)
Subwoofer : 40 W (70Hz, T.H.D. 1.0 %, 4Ω, 20 kHz LPF)

Speaker Unit

Woofer : 8 cm Cone Type x2
Tweeter: 2 cm Dome Type x 2
Subwoofer: 12 cm Cone Type

Analogue Input Terminal

AUX IN x 1 (φ3.5 mm) (1/8 inch)

Digital Input Terminal

Optical Digital x 1, USB-A

Headphone Output

Yes φ3.5 mm (1/8 inch)

Disc Compatibility

Audio CD, CD-R/CD-RW
(CD-DA, Discs recorded and finalized on recording devices)

USB-A / DLNA Support codec

iPod/iPhone/iPad: No
WAV / FLAC / AIFF / ALAC: Yes (32, 44.1, 48, 88.2, 96, 176.4, 192 kHz / 16, 24 bit)
DSD: Yes (2.8 MHz, 5.6 MHz)
AAC: Yes (32, 44.1, 48, 88.2, 96 kHz / 16 - 320 kbps)
WMA / MP3: Yes (32, 44.1, 48 kHz / 16 - 320 kbps)

Ethernet Interface

LAN (100 Base-TX / 10 Base-T)

Wi-Fi

IEEE 802.11 b/g/n, 2.4 GHz Band (1 - 11 Channel)

Chromecast built-in

Yes

Works with Google Assistant

Yes

AirPlay 2

Yes

Bluetooth (Support codec)

Yes (AAC, SBC)

TIDAL / Spotify

Yes* / Yes*

Tuner

DAB/DAB+/FM

Power Supply

AC120 V, 60 Hz

Power Consumption

45 W

Dimensions & Weight

W: 450 x H: 143 x D: 280 mm / Approx. 8.0 kg
(17-23/32 x 5-5/8 x 11-1/32 inch) / Approx. 17.6 lbs.

Accessories

Remote Control, AC Cord, DAB Indoor Antenna,
Batteries for Remote Control

*Network content services are operated by their respective service providers, and service may be discontinued either temporarily or permanently without notice.

Some content may not be available in the country in which you reside.

*Registration/subscription may be required. Fees may apply.

Technics is a brand name of the Panasonic Corporation

Panasonic Consumer Electronics Company
Division of Panasonic Corporation of North America
Two Riverfront Plaza
Newark, NJ 07102-5490
(201) 348-7000

www.panasonic.com

www.technics.com

Design and specifications subject to change without notice.

■ facebook.com/technics.global

■ instagram.com/technics_global

■ twitter.com/technics

■ youtube.com/user/TechnicsOfficial